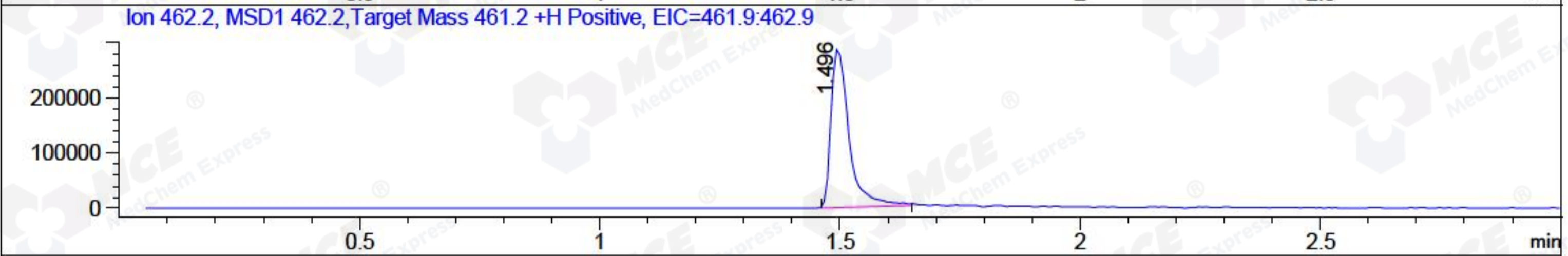
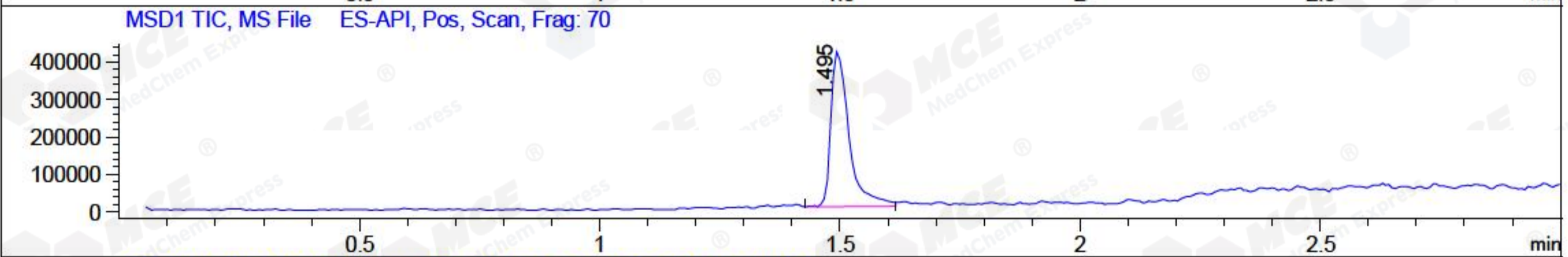
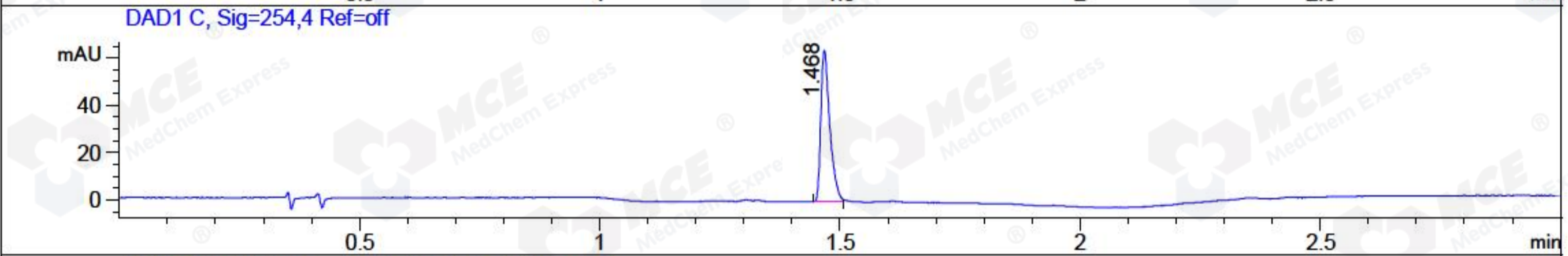
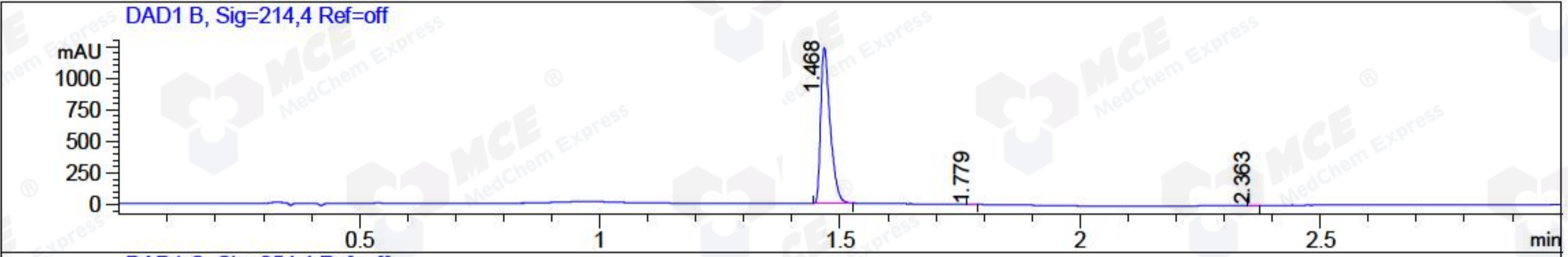


File ..1\DATA\2018\20181206\522\BIZ2018-D06-WYQ7.D Tgt Mass (CHM):
 Injection Date : 6 Dec 18 5:19 pm +0800 Seq. Line : 11
 Sample Name : BIZ2018-D06-WYQ7 Location : P2-F-09
 Acq. Operator : LQ_1052 Inj : 1
 Spec. Reported : MS Integration Inj Volume : 3 ul
 Acq. Method : D:\Chem32\1\data\2018\20181206\522\1-POS-3MIN-1.M
 Analysis Method : D:\CHEM32\1\DATA\2018\20181206\522\1-POS-3MIN-1.M
 Catalog No : HY-12987 Batch#34953 A-RP-314
 Method Info : Mobile Phase: A: water(0.01%TFA) B:ACN(0.01%TFA)
 Gradient: 5% to 95%B within 1.3 min
 Flow Rate :1.8ml/min
 Column :SunFire C18, 4.6*50mm,3.5um A-RP-314
 Oven Temperature : 45



Integration Results for DAD1 B, Sig=214,4 Ref=off

| RetTim | Width | Area | Height | Area% | MS (+) |
|--------|-------|---------|---------|-------|--------|
| 1.47 | 0.02 | 1702.62 | 1233.92 | 99.88 | 462 |
| 1.78 | 0.01 | 1.13 | 1.28 | 0.07 | 462 |
| 2.36 | 0.02 | 0.97 | 0.78 | 0.06 | 141 |

Integration Results for DAD1 C, Sig=254,4 Ref=off

| RetTim | Width | Area | Height | Area% | MS (+) |
|--------|-------|-------|--------|--------|--------|
| 1.47 | 0.02 | 83.39 | 63.90 | 100.00 | 462 |

Integration Results for MSD1 TIC, MS File

| RetTim | Width | Area | Height | Area% | MS (+) |
|--------|-------|------------|-----------|--------|--------|
| 1.50 | 0.04 | 1087887.88 | 417539.84 | 100.00 | 462 |

Ret. Time: 1.50

<<<< POSITIVE SPECTRA >>>>

ES-API Positive

