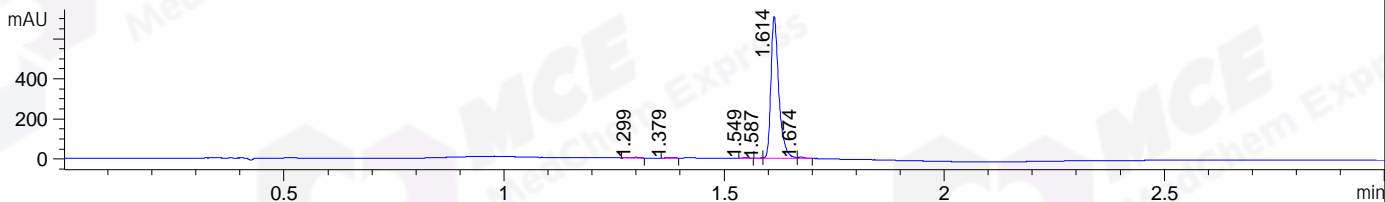
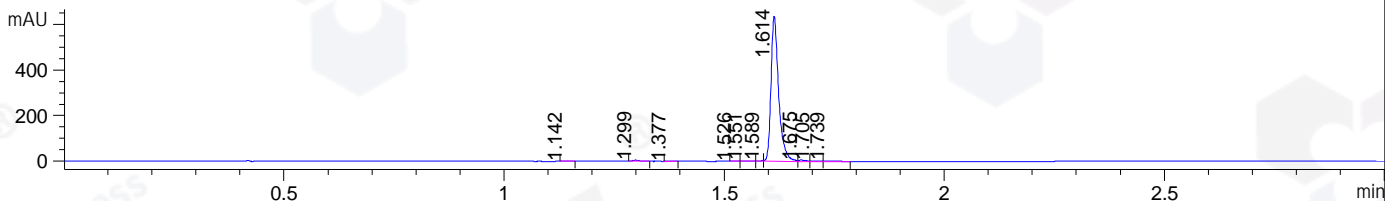


File ..DATA\2019\20191111\758\CPK2019-N08-04903-.D Tgt Mass (CHM):
 Injection Date : 11 Nov 19 12:37 pm +0800 Seq. Line : 43
 Sample Name : CPK2019-N08-04903 Location : P1-B-07
 Acq. Operator : ZJ_1432 Inj : 1
 Spec. Reported : MS Integration Inj Volume : 2 ul
 Acq. Method : D:\Chem32\1\data\2019\20191111\758\1-POS-3MIN.M
 Analysis Method : D:\CHEM32\1\DATA\2019\20191111\758\1-POS-3MIN.M
 Catalog No : HY-13061 Batch#04903
 Method Info : Mobile Phase: A: water(0.01%TFA) B:ACN(0.01%TFA)
 Gradient: 5% to 95%B within 1.3 min
 Flow Rate :1.8ml/min
 Column :SunFire C18, 4.6*50mm,3.5um A-RP-433
 Oven Temperature : 45□

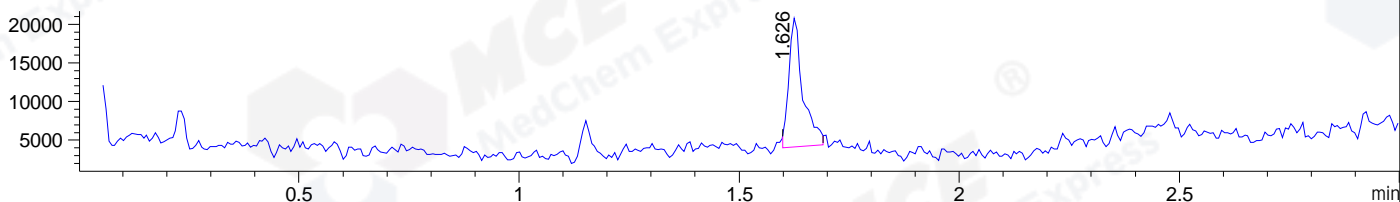
DAD1 B, Sig=214,4 Ref=off



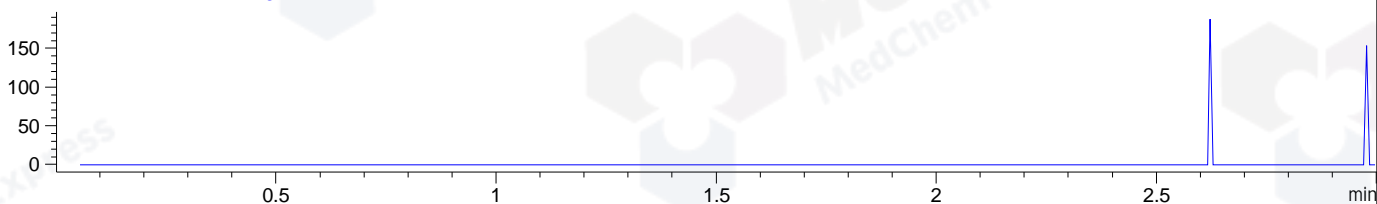
DAD1 C, Sig=254,4 Ref=off



MSD1 TIC, MS File ES-API, Pos, Scan, Frag: 70



Ion 885, MSD1 885, Target Mass 884 +H Positive, EIC=884.7:885.7



Integration Results for DAD1 B, Sig=214,4 Ref=off

RetTim	Width	Area	Height	Area%	MS (+)
1.30	0.02	4.89	3.58	0.54	157
1.38	0.02	2.90	2.78	0.32	157
1.55	0.01	2.25	2.60	0.25	157
1.59	0.01	1.24	1.76	0.14	ND
1.61	0.02	880.27	708.81	98.05	363
1.67	0.02	6.27	5.81	0.70	157

Integration Results for DAD1 C, Sig=254,4 Ref=off

RetTim	Width	Area	Height	Area%	MS (+)
1.14	0.02	0.89	0.89	0.11	212
1.30	0.02	4.50	4.70	0.57	157
1.38	0.02	0.80	0.78	0.10	157
1.53	0.01	0.96	1.10	0.12	157
1.55	0.02	3.20	2.27	0.40	157
1.59	0.01	2.12	2.97	0.27	157
1.61	0.02	770.01	638.84	96.91	363
1.68	0.02	6.74	5.64	0.85	157

1.71	0.02	2.77	2.02	0.35	157
1.74	0.03	2.58	1.67	0.32	157

Integration Results for MSD1 TIC, MS File

RetTim	Width	Area	Height	Area%	MS(+)
1.63	0.03	36703.77	16689.00	100.00	363

Ret. Time: 1.63

<<<< POSITIVE SPECTRA >>>>

ES-API Positive

