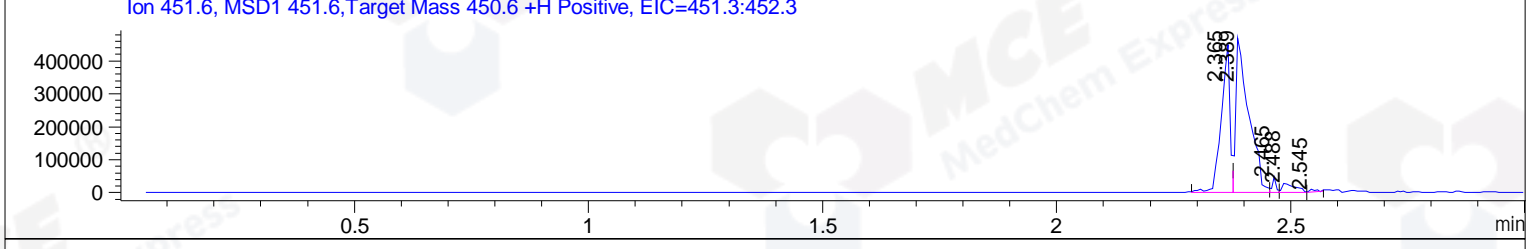
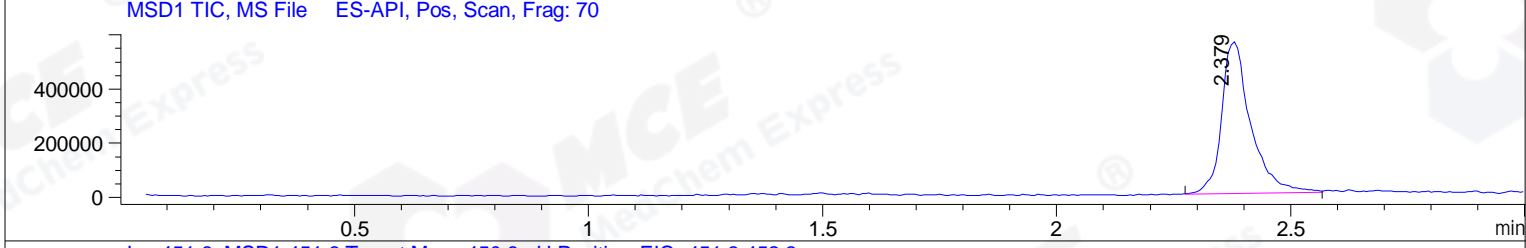
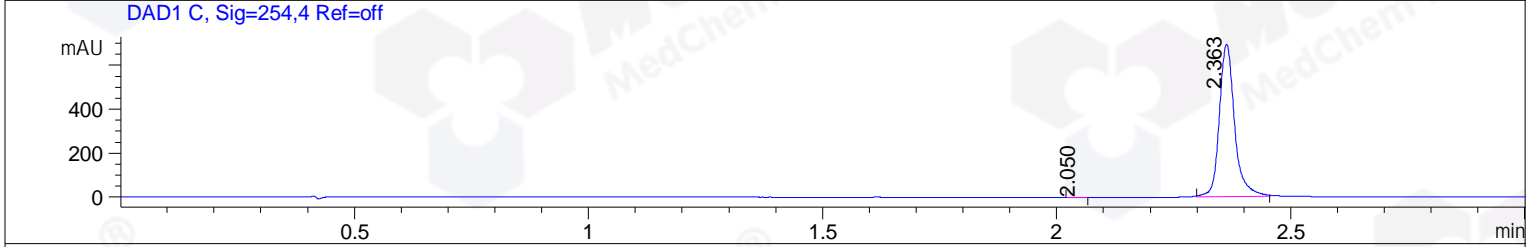
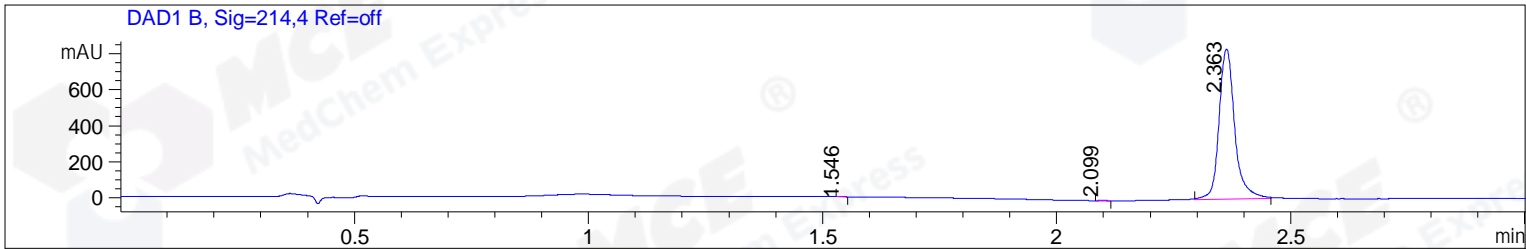


File ..ATA\2019\20190325\561\CPK2019-322-20552-1.D Tgt Mass (CHM):
 Injection Date : 25 Mar 19 10:09 am +0800 Seq. Line : 9
 Sample Name : CPK2019-322-20552 Location : P2-E-09
 Acq. Operator : LQ_1052 Inj : 1
 Spec. Reported : MS Integration Inj Volume : 3 ul
 Acq. Method : D:\Chem32\1\data\2019\20190325\561\1-POS-3MIN-1.M
 Analysis Method : D:\CHEM32\1\DATA\2019\20190325\561\1-POS-3MIN-1.M
 Catalog No : HY-13067 Batch#20552
 Method Info : Mobile Phase: A: water(0.01%TFA) B:ACN(0.01%TFA)
 Gradient: 5% to 95%B within 1.3 min
 Flow Rate :1.8ml/min
 Column :SunFire C18, 4.6*50mm,3.5um A-RP-314
 Oven Temperature : 45



Integration Results for DAD1 B, Sig=214,4 Ref=off

RetTim	Width	Area	Height	Area%	MS (+)
1.55	0.02	0.51	0.46	0.03	ND
2.10	0.02	1.15	0.95	0.06	142
2.36	0.04	1934.22	834.60	99.91	451

Integration Results for DAD1 C, Sig=254,4 Ref=off

RetTim	Width	Area	Height	Area%	MS (+)
2.05	0.03	0.52	0.32	0.03	142
2.36	0.03	1567.19	692.60	99.97	451

Integration Results for MSD1 TIC, MS File

RetTim	Width	Area	Height	Area%	MS (+)
2.38	0.06	2433417.50	561828.19	100.00	451

Ret. Time: 2.38

<<<< POSITIVE SPECTRA >>>>

ES-API Positive

