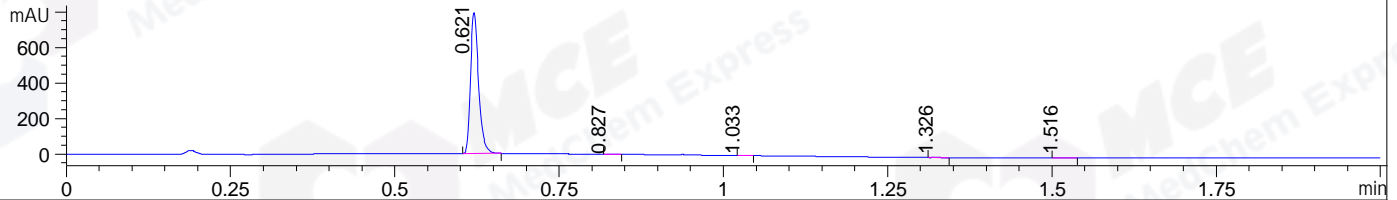


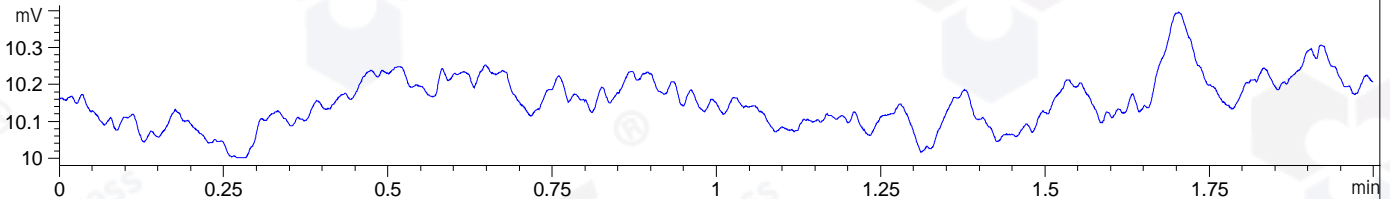
File ..00929 2020-09-29 08-28-04\XGJ8155-003-1_1.D Tgt Mass (CHM):

Injection Date : 29 Sep 20 10:53 am +0800 Seq. Line : 39
 Sample Name : XGJ8155-003-1 Location : P1-B-05
 Acq. Operator : SYSTEM Inj : 1
 Spec. Reported : MS Integration Inj Volume : 0.2 ul
 Acq. Method : D:\LCMS03\Data\20200929\20200929 2020-09-29 08-28-04\1-POS-UPLC2.0MIN(0.8ML
 Analysis Method : D:\LCMS03\Data\20200929\20200929 2020-09-29 08-28-04\1-POS-UPLC2.0MIN(0.8ML
 CAS NO. : 180608-78-0
 Method Info : Mobile Phase: A: water(0.01%TFA) B:ACN(0.01%TFA)
 Gradient: 5% to 95%B within 0.6 min
 Flow Rate :0.8ml/min
 Column :Poroshell 120 EC- C18, 2.1*50mm,1.9um A-RP-530
 Oven Temperature : 45C

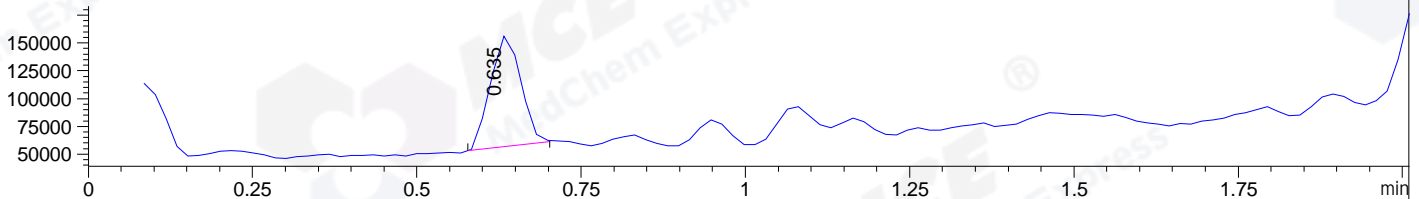
DAD1 A, Sig=214,4 Ref=off



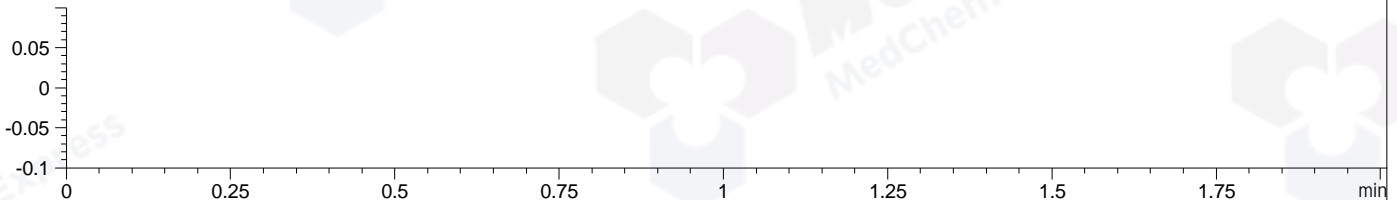
ELS1 A, ELSD Signal



MSD1 TIC, MS File ES-API, Pos, Scan, Frag: 70



Ion 1, MSD1 1, Target Mass 0 +H Positive, EIC=0.7:1.7



Integration Results for DAD1 A, Sig=214,4 Ref=off

RetTim	Width	Area	Height	Area%	MS (+)
0.62	0.01	677.68	798.53	99.66	184
0.83	0.01	0.65	0.89	0.10	161
1.03	0.01	0.38	0.56	0.06	161
1.33	0.01	0.78	1.05	0.11	161
1.52	0.01	0.47	0.53	0.07	161

Integration Results for ELS1 A, ELSD Signal

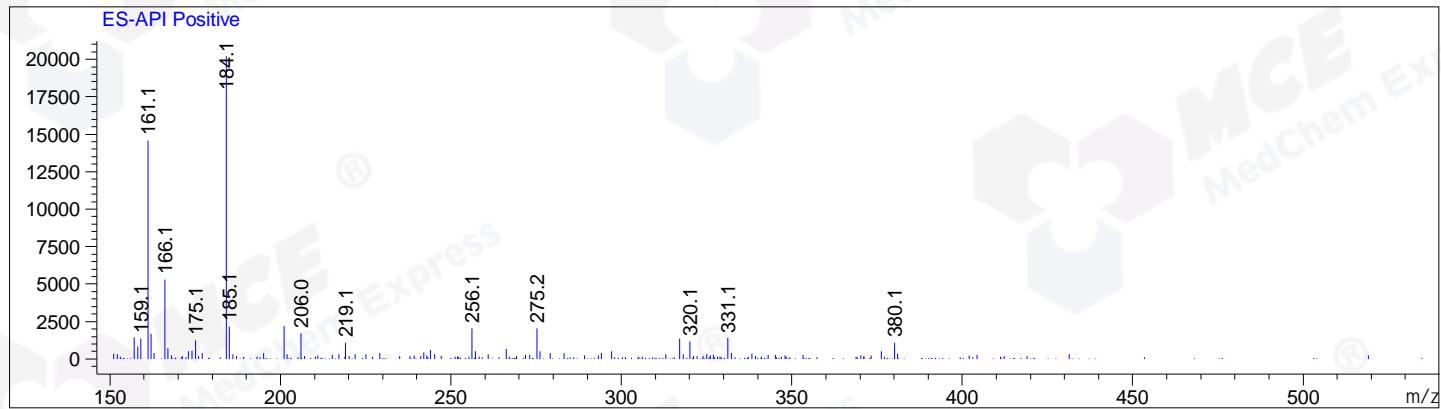
RetTim	Width	Area	Height	Area%	MS (+)
--------	-------	------	--------	-------	--------

Integration Results for MSD1 TIC, MS File

RetTim	Width	Area	Height	Area%	MS (+)
0.64	0.05	322314.78	102460.09	100.00	184

Ret. Time: 0.64

<<<< POSITIVE SPECTRA >>>>



*** End of Report ***