

File ..DATA\2020\20200723\1051\CPK2020-723-16491.D Tgt Mass (CHM):

Injection Date : 23 Jul 20 1:30 pm +0800 Seq. Line : 35

Sample Name : CPK2020-723-16491 Location : PL-D-07

Acq. Operator : ZJ\_1432 Inj : 1

Spec. Reported : MS Integration Inj Volume : 1 ul

Acq. Method : D:\Chem32\1\data\2020\20200723\1051\1-POS-3MIN.M

Analysis Method : D:\CHEM32\1\DATA\2020\20200723\1051\1-POS-3MIN.M

Catalog No : HY-13304

Method Info : Mobile Phase: A: water(0.01%TFA) B:ACN(0.01%TFA)

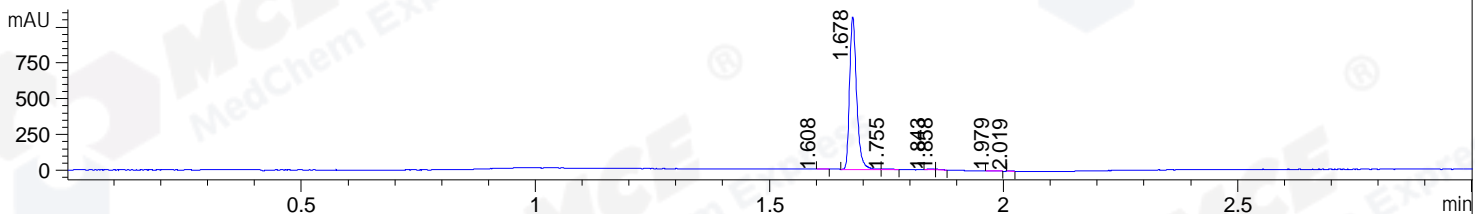
Gradient: 5% to 95%B within 1.3 min

Flow Rate :1.8ml/min

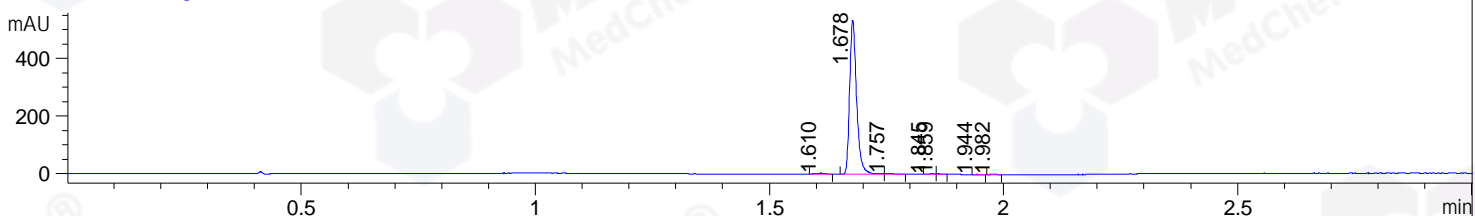
Column :SunFire C18, 4.6\*50mm,3.5um A-RP-607

Oven Temperature : 45

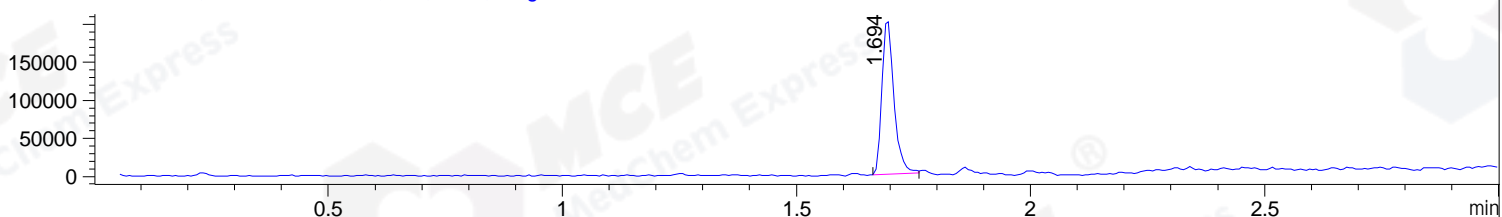
DAD1 B, Sig=214,4 Ref=off



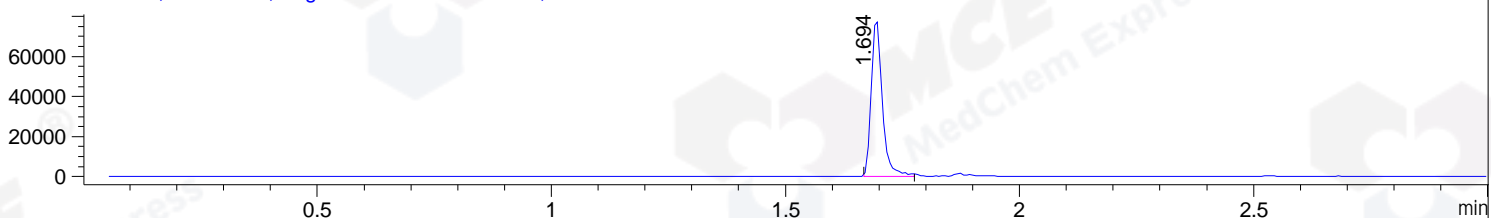
DAD1 C, Sig=254,4 Ref=off



MSD1 TIC, MS File ES-API, Pos, Scan, Frag: 70



Ion 444, MSD1 444, Target Mass 443 +H Positive, EIC=443.7:444.7



Integration Results for DAD1 B, Sig=214,4 Ref=off

RetTim	Width	Area	Height	Area%	MS (+)
1.61	0.01	2.38	3.00	0.21	ND
1.68	0.02	1112.18	1068.29	98.04	444
1.75	0.02	6.27	4.34	0.55	444
1.84	0.02	5.48	5.58	0.48	587
1.86	0.01	2.94	4.27	0.26	587
1.98	0.02	4.10	3.49	0.36	ND
2.02	0.01	1.05	1.73	0.09	ND

Integration Results for DAD1 C, Sig=254,4 Ref=off

RetTim	Width	Area	Height	Area%	MS (+)
1.61	0.02	3.47	2.98	0.62	ND
1.68	0.02	550.98	535.35	98.06	444
1.76	0.02	3.05	2.36	0.54	444
1.85	0.01	1.34	1.51	0.24	587
1.86	0.01	0.93	1.42	0.17	587
1.94	0.01	0.72	0.84	0.13	ND
1.98	0.02	1.38	1.37	0.25	ND

## Integration Results for MSD1 TIC, MS File

RetTim	Width	Area	Height	Area%	MS(+)
1.69	0.03	365225.50	206047.34	100.00	444

Ret. Time: 1.69

<<<< POSITIVE SPECTRA >>>>

ES-API Positive

