

File ..DATA\2020\20200619\1001\BIZ2020-618-SCH1-.D Tgt Mass (CHM):

Injection Date : 19 Jun 20 1:23 pm +0800 Seq. Line : 53

Sample Name : BIZ2020-618-SCH1 Location : P1-A-05

Acq. Operator : ZJ_1432 Inj : 1

Spec. Reported : MS Integration Inj Volume : 0.5 ul

Acq. Method : D:\Chem32\1\data\2020\20200619\1001\1-POS-3MIN.M

Analysis Method : D:\CHEM32\1\DATA\2020\20200619\1001\1-POS-3MIN.M

Catalog No : HY-135317

Method Info : Mobile Phase: A: water(0.01%TFA) B:ACN(0.01%TFA)

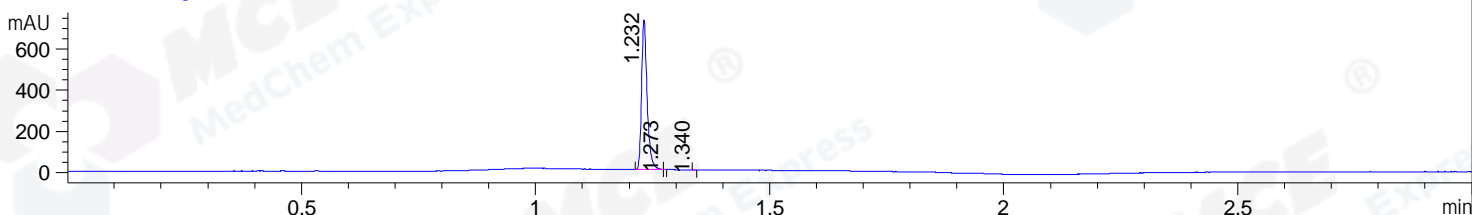
Gradient: 5% to 95%B within 1.3 min

Flow Rate :1.8ml/min

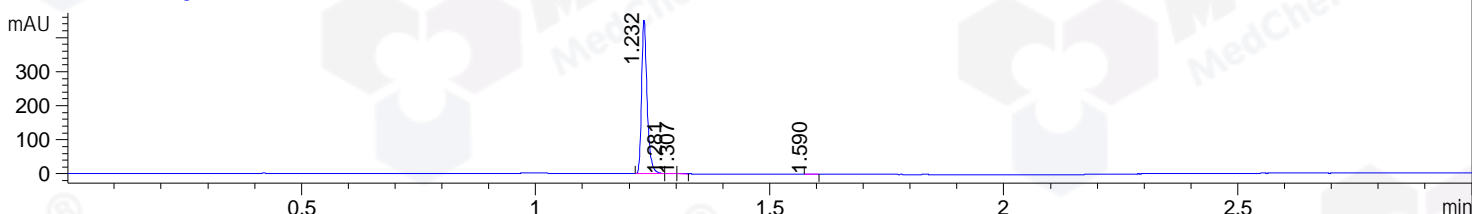
Column :SunFire C18, 4.6*50mm,3.5um A-RP-607

Oven Temperature : 45

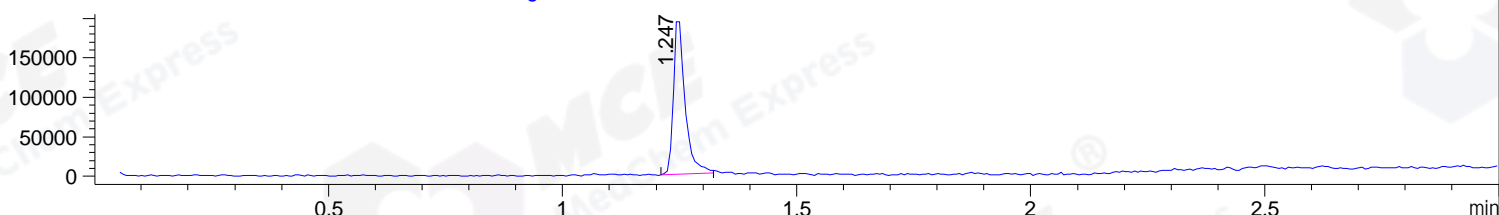
DAD1 B, Sig=214,4 Ref=off



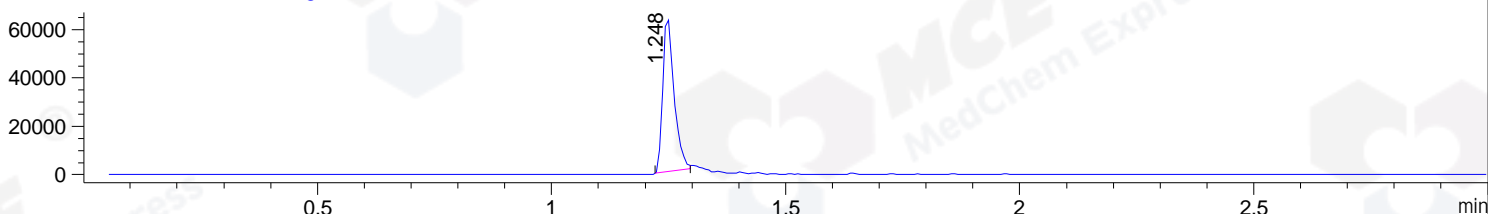
DAD1 C, Sig=254,4 Ref=off



MSD1 TIC, MS File ES-API, Pos, Scan, Frag: 70



Ion 492, MSD1 492, Target Mass 491 +H Positive, EIC=491.7:492.7



Integration Results for DAD1 B, Sig=214,4 Ref=off

RetTim	Width	Area	Height	Area%	MS (+)
1.23	0.01	604.10	730.48	99.92	247
1.27	0.00	0.27	1.37	0.04	492
1.34	0.01	0.23	0.68	0.04	492

Integration Results for DAD1 C, Sig=254,4 Ref=off

RetTim	Width	Area	Height	Area%	MS (+)
1.23	0.01	373.41	452.21	99.25	247
1.28	0.02	1.37	1.26	0.36	492
1.31	0.01	0.67	0.77	0.18	492
1.59	0.02	0.79	0.79	0.21	ND

Integration Results for MSD1 TIC, MS File

RetTim	Width	Area	Height	Area%	MS (+)
1.25	0.02	337691.84	200859.39	100.00	247

Ret. Time: 1.25

<<<< POSITIVE SPECTRA >>>>

ES-API Positive

