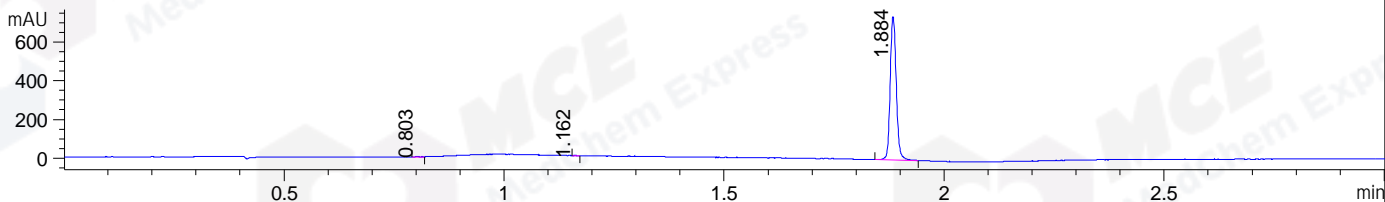
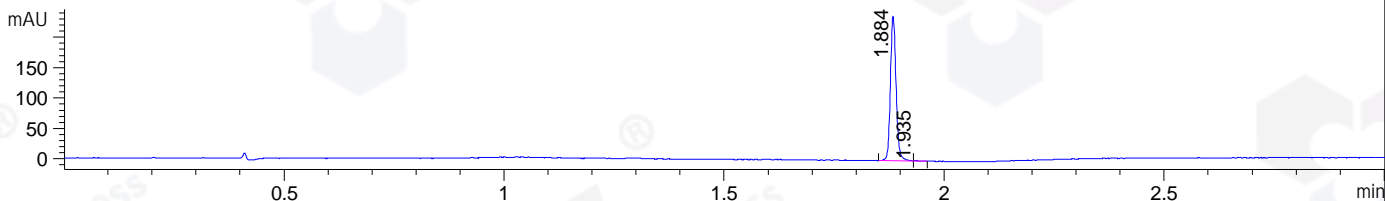


File ..DATA\2020\20200730\1058\BIZ2020-729-SCH14.D Tgt Mass (CHM):
 Injection Date : 30 Jul 20 2:25 pm +0800 Seq. Line : 64
 Sample Name : BIZ2020-729-SCH14 Location : P1-B-03
 Acq. Operator : ZJ_1432 Inj : 1
 Spec. Reported : MS Integration Inj Volume : 1 ul
 Acq. Method : D:\Chem32\1\data\2020\20200730\1058\1-POS-3MIN.M
 Analysis Method : D:\CHEM32\1\DATA\2020\20200730\1058\1-POS-3MIN.M
 Catalog No : HY-13563A
 Method Info : Mobile Phase: A: water(0.01%TFA) B:ACN(0.01%TFA)
 Gradient: 5% to 95%B within 1.3 min
 Flow Rate :1.8ml/min
 Column :SunFire C18, 4.6*50mm,3.5um A-RP-314
 Oven Temperature : 45C

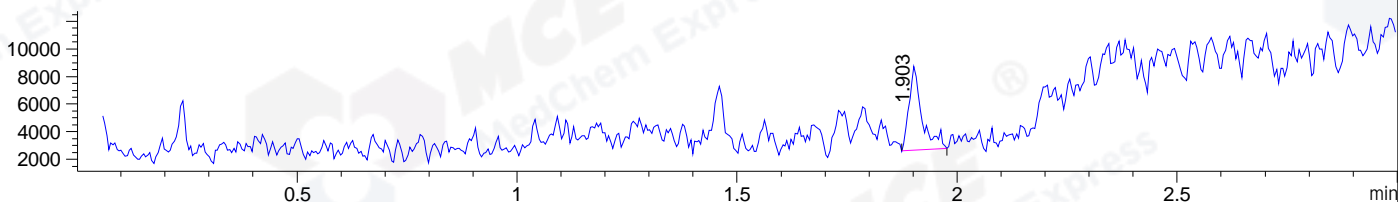
DAD1 B, Sig=214,4 Ref=off



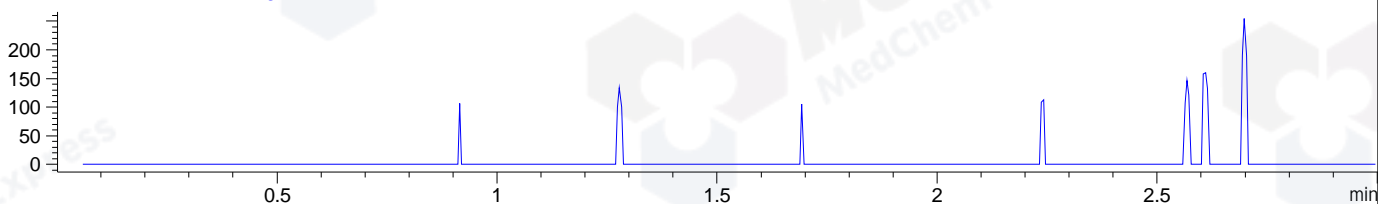
DAD1 C, Sig=254,4 Ref=off



MSD1 TIC, MS File ES-API, Pos, Scan, Frag: 70



Ion 372, MSD1 372, Target Mass 371 +H Positive, EIC=371.7:372.7



Integration Results for DAD1 B, Sig=214,4 Ref=off

RetTim	Width	Area	Height	Area%	MS (+)
0.80	0.01	0.62	1.52	0.09	ND
1.16	0.01	0.88	2.08	0.12	ND
1.88	0.02	709.57	741.98	99.79	ND

Integration Results for DAD1 C, Sig=254,4 Ref=off

RetTim	Width	Area	Height	Area%	MS (+)
1.88	0.01	212.65	237.82	99.71	141
1.93	0.02	0.61	0.60	0.29	ND

Integration Results for MSD1 TIC, MS File

RetTim	Width	Area	Height	Area%	MS (+)
1.90	0.03	12374.66	6056.19	100.00	ND