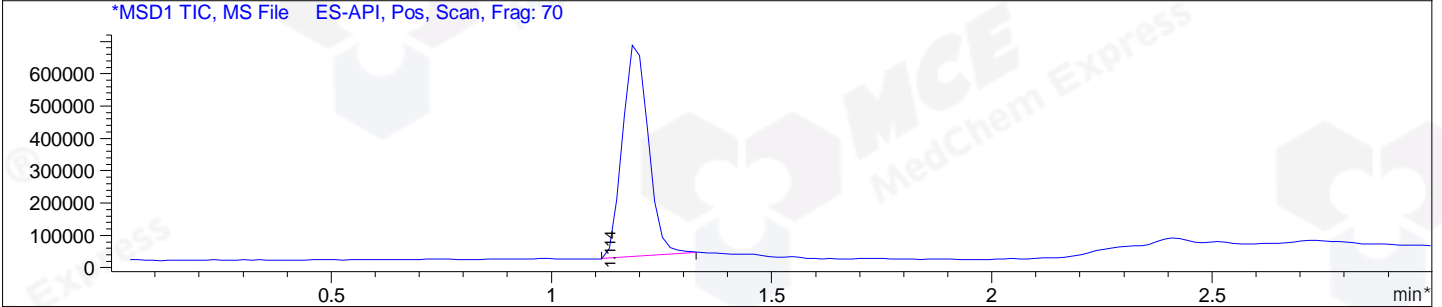
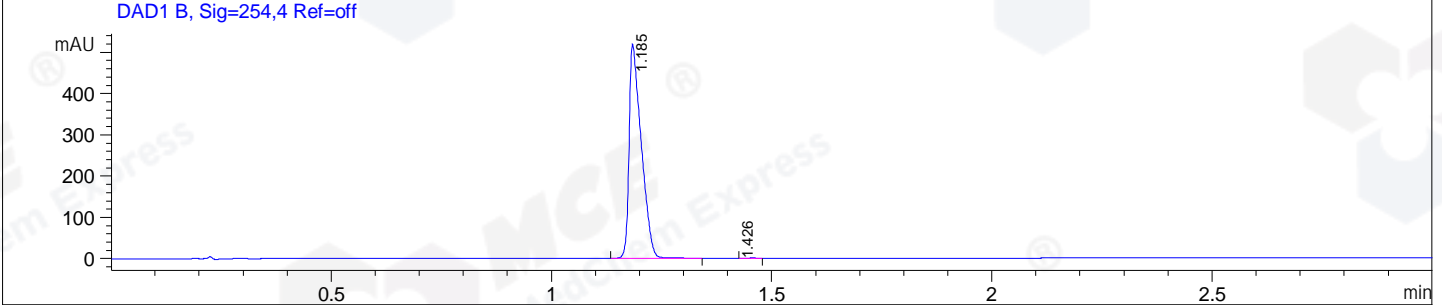
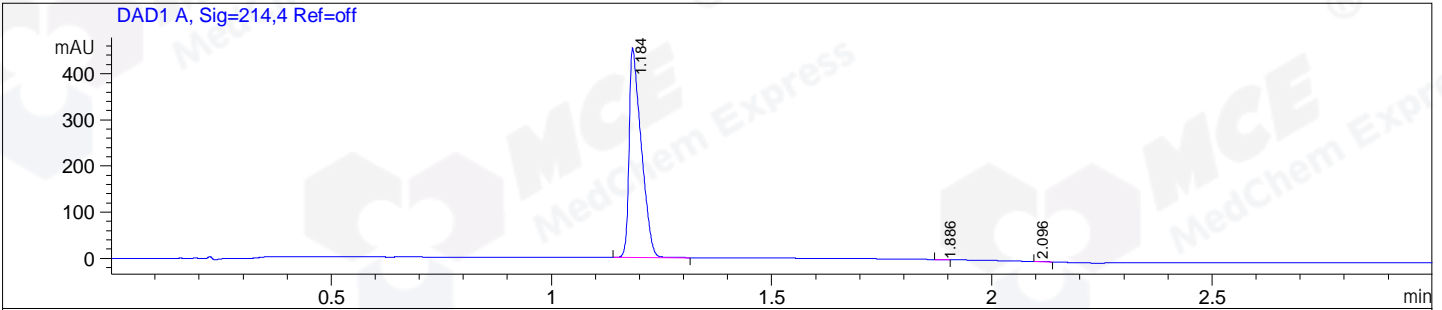


File E:\ChemStation\1\DATA\2024\2024-01\2024-01-12\BIZ2024-111-SCH12-UPLC-MS-10-024437.D
 Injection Date : 12-Jan-24, 10:25:06 Tgt Mass(EZX) :
 Sample Name : BIZ2024-111-SCH12 Location : P1-F-04
 Acq. Operator : LY_2278 Inj : 1
 Spec. Reported : MS Integration Inj Volume : 0.8 ul
 Acq. Method : E:\ChemStation\1\Methods\1-POS-UPLC3.0MIN(1.2)(150-1000).M
 Analysis Method : E:\CHEMSTATION\1\METHODS\1-POS-UPLC3.0MIN(1.2)(150-1000).M
 CAS NO. : 1422365-94-3 WalkUp method: '1-POS-3MIN' Project: BIZ2024
 Method Info : Mobile Phase: A: water(0.01%TFA) B:ACN(0.01%TFA)
 Gradient: 5% to 95%B within 2.0 min
 Flow Rate :1.2ml/min
 Column :Shim-pack Scepter C18-120, 3.0*33mm,3um
 Oven Temperature : 45C



Integration Results for DAD1 A, Sig=214,4 Ref=off

RetTim	Width	Area	Height	Area%
1.18	0.03	866.61	454.35	99.88
1.89	0.02	0.32	0.28	0.04
2.10	0.02	0.74	-0.01	0.08

Integration Results for DAD1 B, Sig=254,4 Ref=off

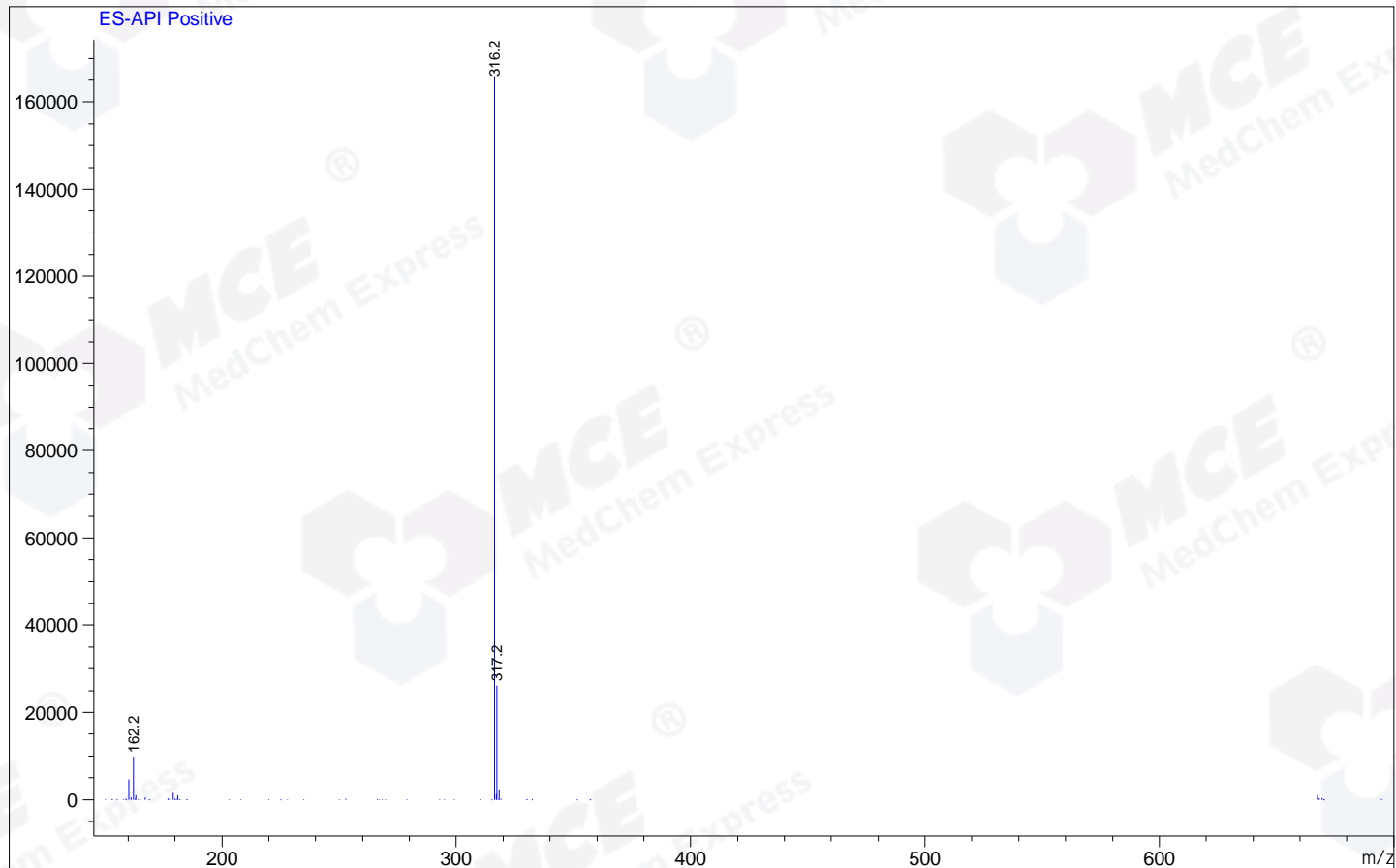
RetTim	Width	Area	Height	Area%
1.18	0.03	989.40	518.37	99.95
1.43	0.02	0.45	0.01	0.05

Integration Results for MSD1 TIC, MS File

RetTim	Width	Area	Height	Area%
1.11	0.06	2664685.75	-391.87	100.00

Ret. Time: 1.11

<<<< POSITIVE SPECTRA >>>>



*** End of Report ***