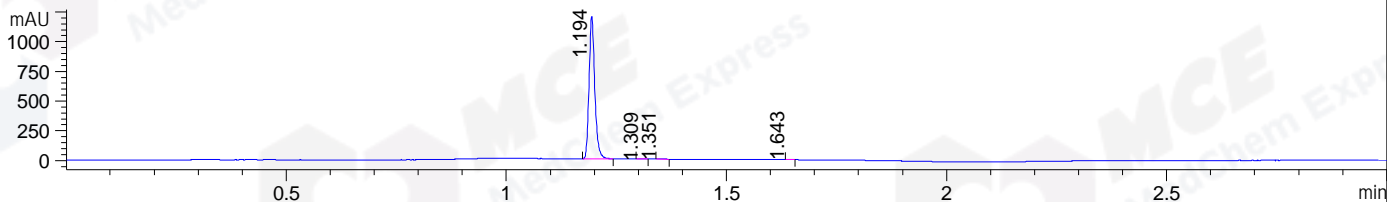
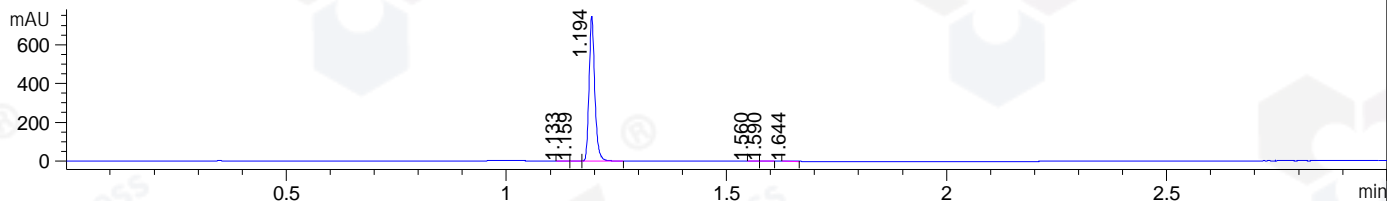


File ..DATA\2020\20200618\1000\BIZ2020-616-WMX15.D Tgt Mass (CHM):
Injection Date : 18 Jun 20 1:32 pm +0800 Seq. Line : 42
Sample Name : BIZ2020-616-WMX15 Location : P1-A-09
Acq. Operator : ZJ_1432 Inj : 1
Spec. Reported : MS Integration Inj Volume : 1 ul
Acq. Method : D:\Chem32\1\data\2020\20200618\1000\1-POS-3MIN.M
Analysis Method : D:\CHEM32\1\DATA\2020\20200618\1000\1-POS-3MIN.M
Catalog No : HY-136270
Method Info : Mobile Phase: A: water(0.01%TFA) B:ACN(0.01%TFA)
Gradient: 5% to 95%B within 1.3 min
Flow Rate :1.8ml/min
Column :SunFire C18, 4.6*50mm,3.5um A-RP-607
Oven Temperature : 45□

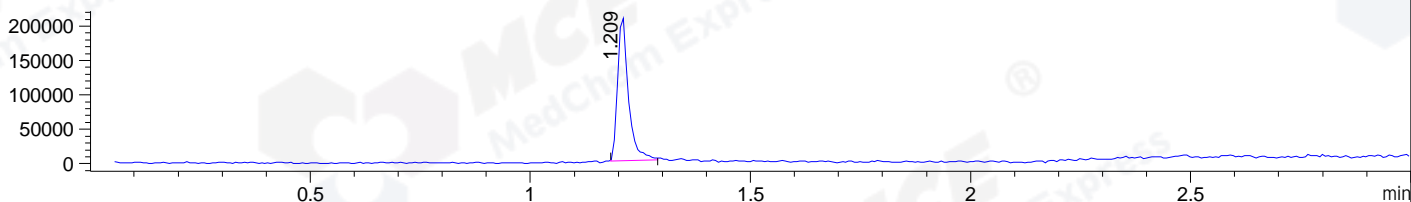
DAD1 B, Sig=214,4 Ref=off



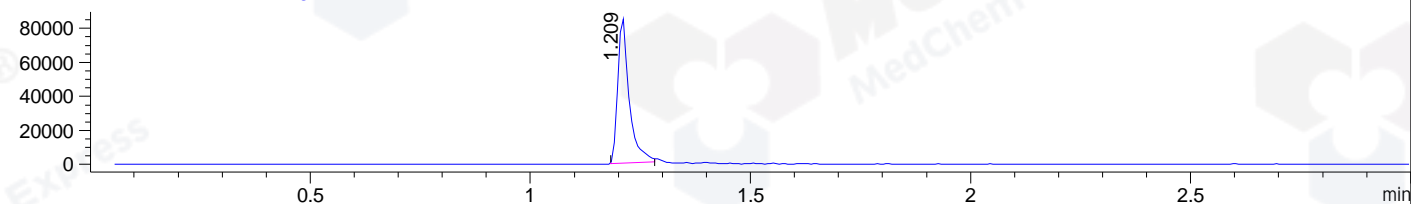
DAD1 C, Sig=254,4 Ref=off



MSD1 TIC, MS File ES-API, Pos, Scan, Frag: 70



Ion 542, MSD1 542, Target Mass 541 +H Positive, EIC=541.7:542.7



Integration Results for DAD1 B, Sig=214,4 Ref=off

RetTim	Width	Area	Height	Area%	MS (+)
1.19	0.02	1081.76	1200.78	99.66	542
1.31	0.02	0.74	0.74	0.07	542
1.35	0.02	1.60	1.57	0.15	ND
1.64	0.01	1.36	1.59	0.12	ND

Integration Results for DAD1 C, Sig=254,4 Ref=off

RetTim	Width	Area	Height	Area%	MS (+)
1.13	0.02	0.88	0.86	0.13	ND
1.16	0.01	0.96	1.09	0.14	ND
1.19	0.01	669.72	748.24	99.28	542
1.56	0.02	0.97	0.92	0.14	ND
1.59	0.02	1.04	0.79	0.15	ND
1.64	0.02	1.02	0.84	0.15	ND

Integration Results for MSD1 TIC, MS File

RetTim	Width	Area	Height	Area%	MS (+)
--------	-------	------	--------	-------	--------

-----|-----|-----|-----|-----|-----|
1.21 0.03 362238.72 211276.72 100.00 542

Ret. Time: 1.21

<<<< POSITIVE SPECTRA >>>>

ES-API Positive

