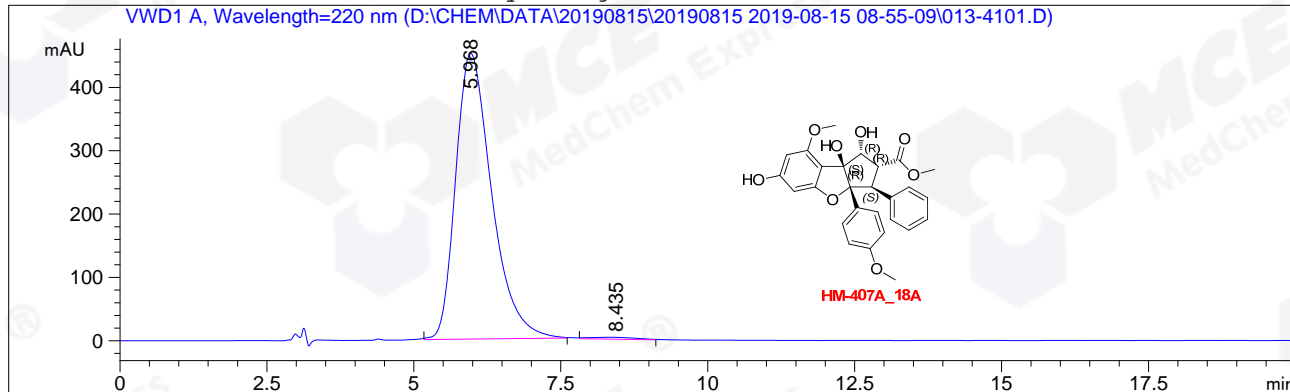


=====
Acq. Operator : WZH Seq. Line : 41
Acq. Instrument : HPLC-04 Location : Vial 13
Injection Date : 8/15/2019 6:41:25 PM Inj : 1
Inj Volume : 5.0 µl
Acq. Method : D:\CHEM\DATA\20190815\20190815 2019-08-15 08-55-09\AS,75A-ETOH,220NM,C1.M
Last changed : 8/15/2019 5:20:21 PM by WZH
(modified after loading)
Analysis Method : D:\CHEM\METHODS\IC,90B-ETOH,210NM,C1.M
Last changed : 8/16/2019 12:23:52 PM by WZH
(modified after loading)
Catalog No : HY-136453
C-NP-31

Additional Info : Peak(s) manually integrated



=====
Area Percent Report
=====

Sorted By : Signal
Multiplier: : 1.0000
Dilution: : 1.0000
Use Multiplier & Dilution Factor with ISTDs

Signal 1: VWD1 A, Wavelength=220 nm

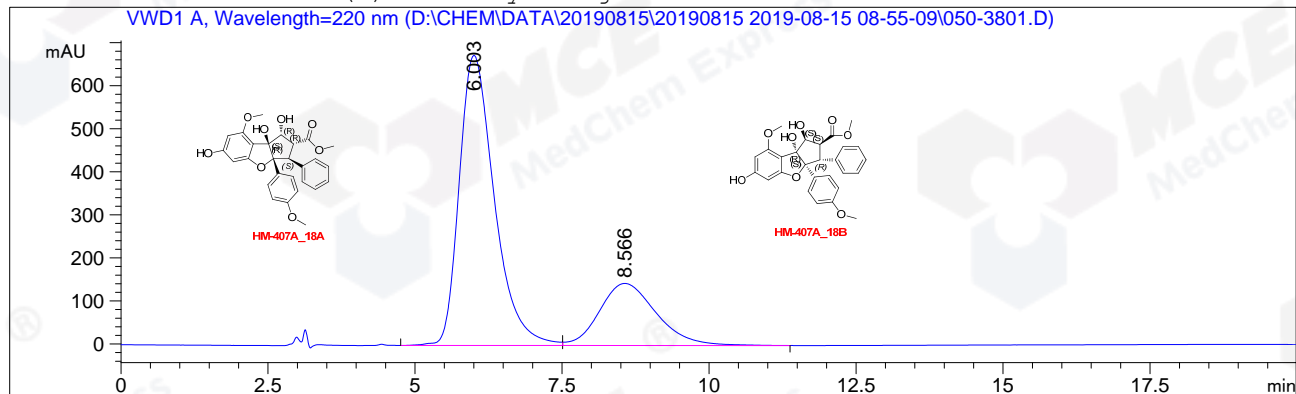
Peak #	RetTime [min]	Type	Width [min]	Area mAU	Height [mAU]	Area %
1	5.968	MM R	0.7105	1.92254e4	450.97812	99.1504
2	8.435	MM R	0.9217	164.73415	2.97877	0.8496

Totals : 1.93901e4 453.95689

=====
*** End of Report ***

```
=====
Acq. Operator   : WZH                               Seq. Line :   38
Acq. Instrument : HPLC-04                           Location  : Vial 50
Injection Date  : 8/15/2019 5:36:12 PM              Inj       :    1
                                                    Inj Volume: 5.0 µl
Acq. Method     : D:\CHEM\DATA\20190815\20190815 2019-08-15 08-55-09\AS,75A-ETOH,220NM,C1.M
Last changed    : 8/15/2019 5:20:21 PM by WZH
                  (modified after loading)
Analysis Method : D:\CHEM\METHODS\AS,75A-ETOH,220NM,C1.M
Last changed    : 8/16/2019 8:31:27 AM by WZH
                  (modified after loading)
Catalog No     : HY-136453
                  C-NP-31
=====
```

Additional Info : Peak(s) manually integrated



=====
Area Percent Report
=====

```
Sorted By      :      Signal
Multiplier:    :      1.0000
Dilution:      :      1.0000
Use Multiplier & Dilution Factor with ISTDs
```

Signal 1: VWD1 A, Wavelength=220 nm

Peak #	RetTime [min]	Type	Width [min]	Area mAU	Height [mAU]	Area %
1	6.003	BV	0.6373	2.79763e4	673.78583	74.2382
2	8.566	VV	1.0198	9708.21582	144.21072	25.7618

Totals : 3.76845e4 817.99655

=====
*** End of Report ***