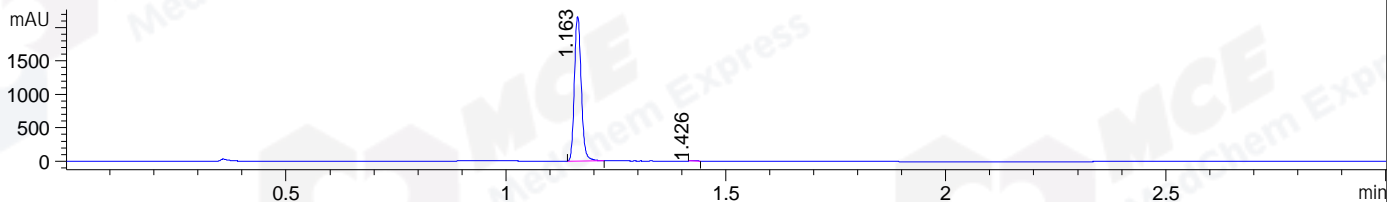
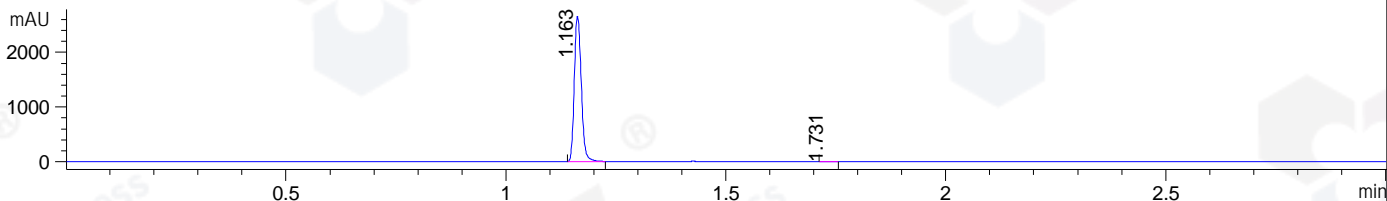


File ..1\DATA\2019\20190612\587\BIZ2019-611-CXL2.D Tgt Mass (CHM):
 Injection Date : 12 Jun 19 11:54 am +0800 Seq. Line : 38
 Sample Name : BIZ2019-611-CXL2 Location : P1-C-06
 Acq. Operator : ZJ_1432 Inj : 1
 Spec. Reported : MS Integration Inj Volume : 1 ul
 Acq. Method : D:\Chem32\1\data\2019\20190612\587\1-POS-3MIN.M
 Analysis Method : D:\CHEM32\1\DATA\2019\20190612\587\1-POS-3MIN.M
 Catalog No : HY-13740 Batch#42005
 Method Info : Mobile Phase: A: water(0.01%TFA) B:ACN(0.01%TFA)
 Gradient: 5% to 95%B within 1.3 min
 Flow Rate :1.8ml/min
 Column :SunFire C18, 4.6*50mm,3.5um A-RP-433
 Oven Temperature : 45□

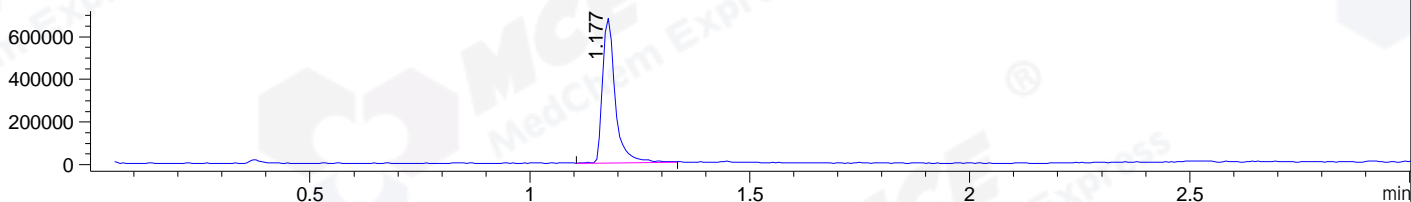
DAD1 B, Sig=214,4 Ref=off



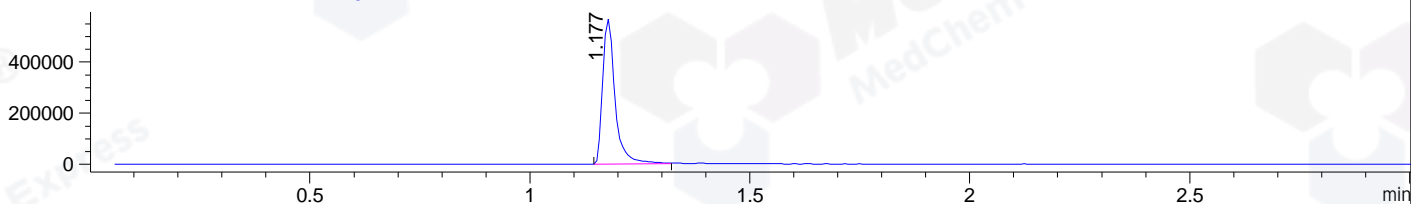
DAD1 C, Sig=254,4 Ref=off



MSD1 TIC, MS File ES-API, Pos, Scan, Frag: 70



Ion 315.17, MSD1 315.17, Target Mass 314.17 +H Positive, EIC=314.87:315.87



Integration Results for DAD1 B, Sig=214,4 Ref=off

RetTim	Width	Area	Height	Area%	MS (+)
1.16	0.02	2351.22	2162.71	99.95	315
1.43	0.01	1.08	1.46	0.05	315

Integration Results for DAD1 C, Sig=254,4 Ref=off

RetTim	Width	Area	Height	Area%	MS (+)
1.16	0.02	2949.18	2659.15	99.93	315
1.73	0.02	2.05	1.57	0.07	315

Integration Results for MSD1 TIC, MS File

RetTim	Width	Area	Height	Area%	MS (+)
1.18	0.03	1366764.00	680543.44	100.00	315

Ret. Time: 1.18

<<<< POSITIVE SPECTRA >>>>

ES-API Positive

