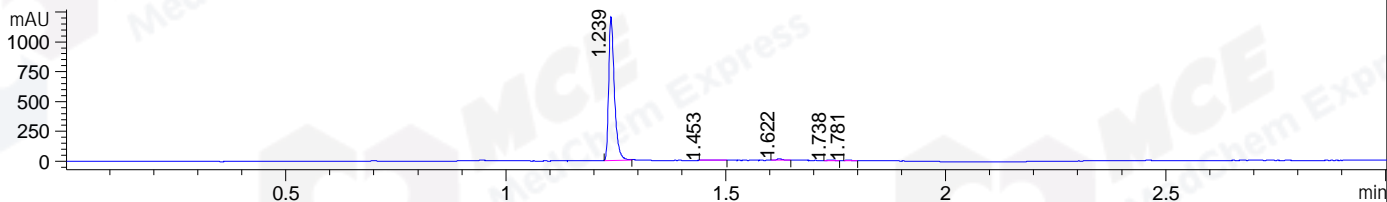
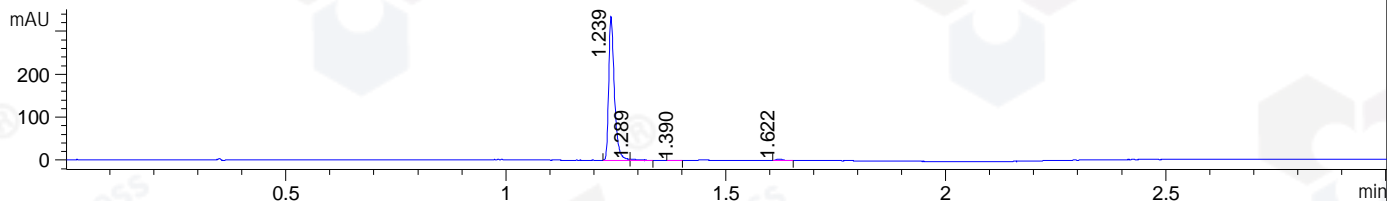


File ..\DATA\2019\20190627\617\CPK2019-626-23241.D Tgt Mass (CHM):  
 Injection Date : 27 Jun 19 2:49 pm +0800 Seq. Line : 70  
 Sample Name : CPK2019-626-23241 Location : P1-B-01  
 Acq. Operator : ZJ\_1432 Inj : 1  
 Spec. Reported : MS Integration Inj Volume : 1 ul  
 Acq. Method : D:\Chem32\1\data\2019\20190627\617\1-POS-3MIN.M  
 Analysis Method : D:\CHEM32\1\DATA\2019\20190627\617\1-POS-3MIN.M  
 Catalog No : HY-13867 Batch#23241  
 Method Info : Mobile Phase: A: water(0.01%TFA) B:ACN(0.01%TFA)  
 Gradient: 5% to 95%B within 1.3 min  
 Flow Rate :1.8ml/min  
 Column :SunFire C18, 4.6\*50mm,3.5um A-RP-433  
 Oven Temperature : 45□

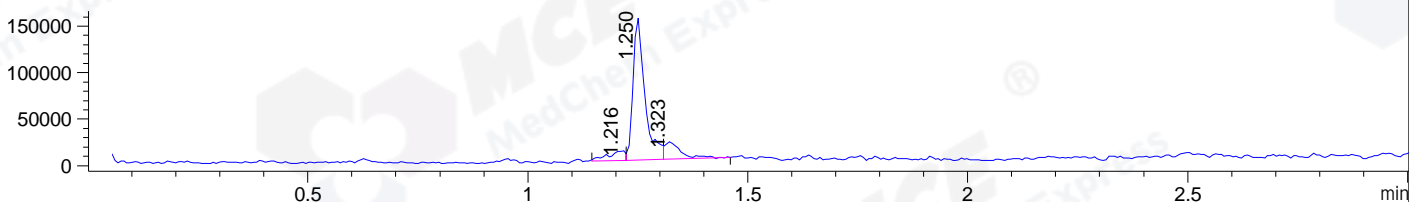
DAD1 B, Sig=214,4 Ref=off



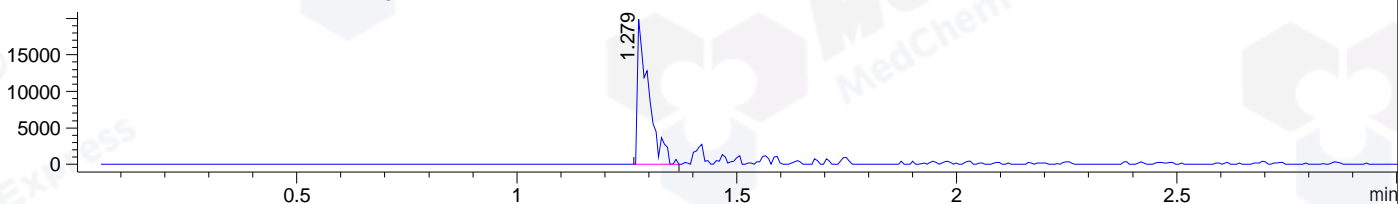
DAD1 C, Sig=254,4 Ref=off



MSD1 TIC, MS File ES-API, Pos, Scan, Frag: 70



Ion 413.4956, MSD1 413.4956, Target Mass 412.4956 +H Positive, EIC=413.20:414.20



Integration Results for DAD1 B, Sig=214,4 Ref=off

RetTim	Width	Area	Height	Area%	MS (+)
1.24	0.01	1087.38	1207.54	98.14	413
1.45	0.02	4.34	3.00	0.39	ND
1.62	0.01	12.56	12.88	1.13	386
1.74	0.01	1.54	1.80	0.14	ND
1.78	0.01	2.16	2.68	0.20	ND

Integration Results for DAD1 C, Sig=254,4 Ref=off

RetTim	Width	Area	Height	Area%	MS (+)
1.24	0.01	300.47	335.99	97.94	413
1.29	0.02	2.54	2.12	0.83	413
1.39	0.02	0.60	0.43	0.19	413
1.62	0.02	3.18	3.39	1.04	386

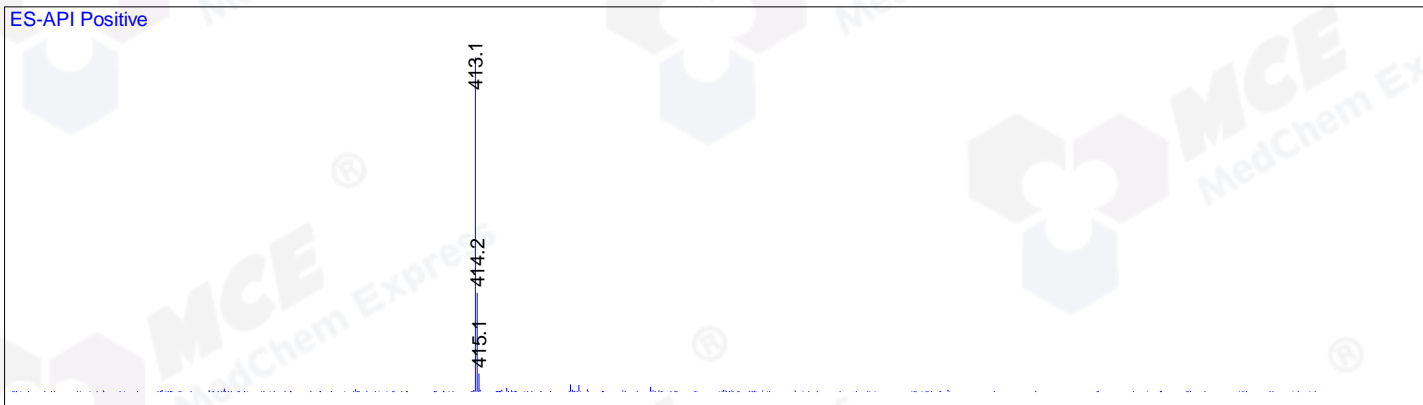
Integration Results for MSD1 TIC, MS File

RetTim	Width	Area	Height	Area%	MS (+)
--------	-------	------	--------	-------	--------

1.22	0.04	28754.30	10826.28	7.89	ND
1.25	0.03	289204.50	154965.58	79.40	413
1.32	0.04	46283.70	18357.16	12.71	413

Ret. Time: 1.25

ES-API Positive



Ret. Time: 1.32

ES-API Positive

