

File ..1\DATA\2018\20181213\519\BIZ2018-D13-WYQ4.D Tgt Mass (CHM):

Injection Date : 13 Dec 18 12:33 pm +0800 Seq. Line : 8

Sample Name : BIZ2018-D13-WYQ4 Location : P1-D-06

Acq. Operator : LQ\_1052 Inj : 1

Spec. Reported : MS Integration Inj Volume : 1 ul

Acq. Method : D:\Chem32\1\data\2018\20181213\519\1-POS-3MIN-1(110-1500).M

Analysis Method : D:\CHEM32\1\DATA\2018\20181213\519\1-POS-3MIN-1(110-1500).M

Catalog No : HY-13948 Batch#35319 A-RP-314

Method Info : Mobile Phase: A: water(0.01%TFA) B:ACN(0.01%TFA)

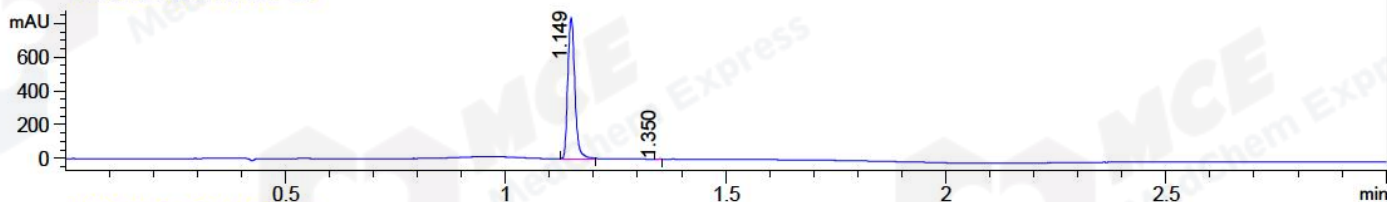
Gradient: 5% to 95%B within 1.3 min

Flow Rate :1.8ml/min

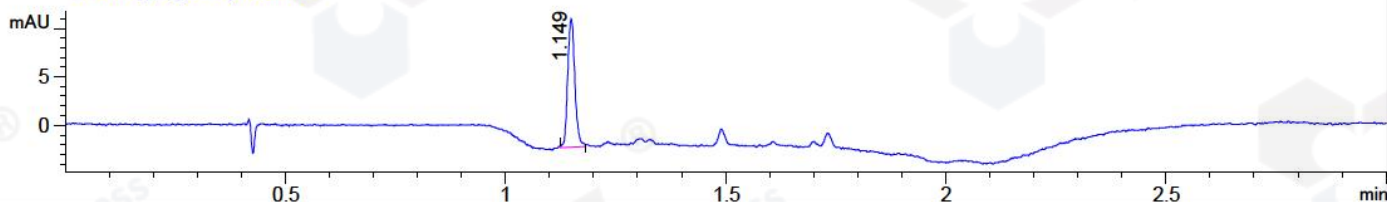
Column :SunFire C18, 4.6\*50mm,3.5um A-RP-314

Oven Temperature : 45C

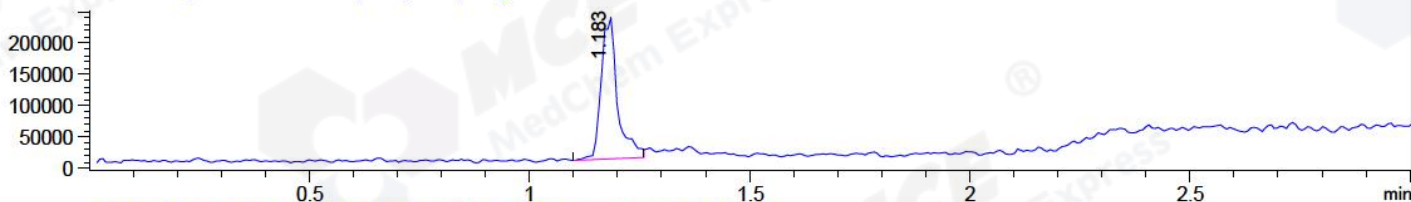
DAD1 B, Sig=214,4 Ref=off



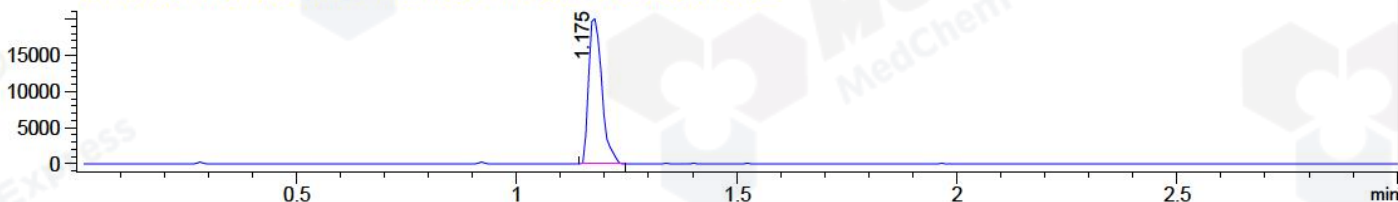
DAD1 C, Sig=254,4 Ref=off



MSD1 TIC, MS File ES-API, Pos, Scan, Frag: 70



Ion 1046.5, MSD1 1046.5, Target Mass 1045.5 +H Positive, EIC=1046.2:1047.2



## Integration Results for DAD1 B, Sig=214,4 Ref=off

RetTim	Width	Area	Height	Area%	MS (+)
1.15	0.02	932.57	833.75	99.96	524
1.35	0.01	0.34	0.69	0.04	141

## Integration Results for DAD1 C, Sig=254,4 Ref=off

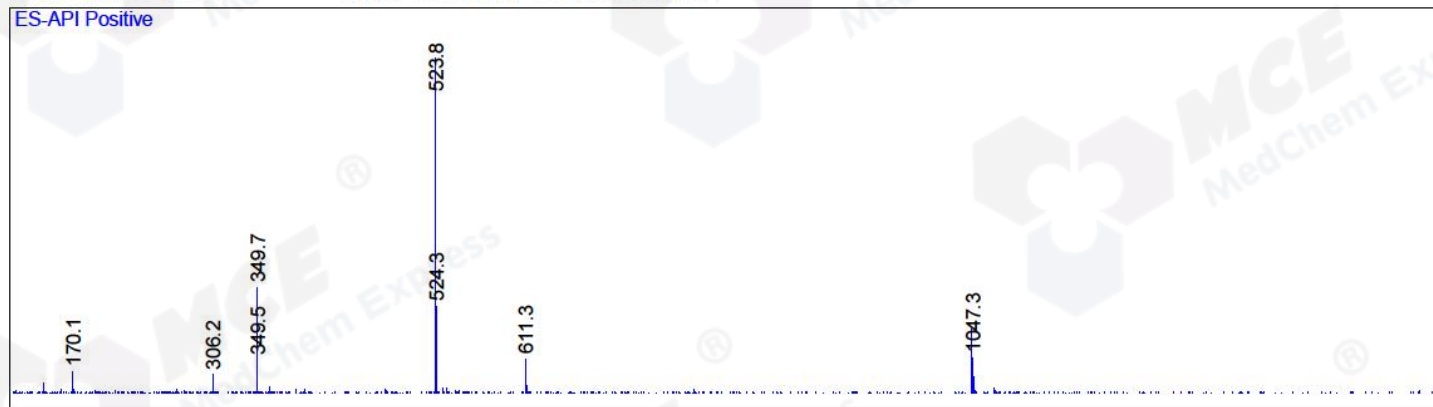
RetTim	Width	Area	Height	Area%	MS (+)
1.15	0.02	14.94	13.27	100.00	524

## Integration Results for MSD1 TIC, MS File

RetTim	Width	Area	Height	Area%	MS (+)
1.18	0.04	581257.13	227980.56	100.00	524

Ret. Time: 1.18

<<<< POSITIVE SPECTRA >>>>



MSD1 SPC, time=1.184 of D:\CHEM32\1\DATA\2018\20181213\519\BIZ2018-D13-WYQ4.D ES-API, Pos, Scan, Frag: 70

