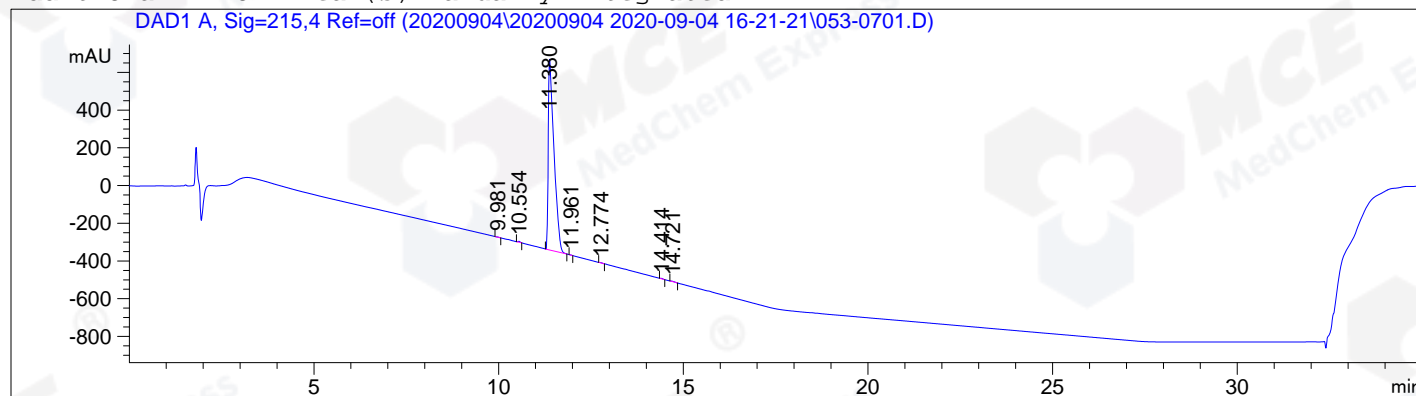


=====  
Acq. Operator : zqq\_793 Seq. Line : 7  
Acq. Instrument : HPLC-12 Location : 53  
Injection Date : 9/4/2020 20:06:22 Inj : 1  
Inj Volume : 5.000 µl  
Acq. Method : D:\Chem32\1\Data\20200904\20200904 2020-09-04 16-21-21\HY-14282-H01P01(RP-HPLC).M  
Last changed : 9/4/2020 16:21:22 by zqq\_793  
Analysis Method : D:\Chem32\1\Data\20200904\20200904 2020-09-04 16-21-21\HY-14282-H01P01(RP-HPLC).M (Sequence Method)  
Last changed : 9/7/2020 9:58:32 by zqq\_793  
(modified after loading)  
Catalog No : HY-14282A

Additional Info : Peak(s) manually integrated



=====  
Area Percent Report  
=====

Sorted By : Signal  
Multiplier : 1.0000  
Dilution : 1.0000  
Do not use Multiplier & Dilution Factor with ISTDs

Signal 1: DAD1 A, Sig=215,4 Ref=off

Peak #	RetTime [min]	Type	Width [min]	Area [mAU*s]	Height [mAU]	Area %
1	9.981	MM	0.0705	3.73260	8.82791e-1	0.0344
2	10.554	MM	0.0661	19.43568	4.90300	0.1789
3	11.380	MM	0.1779	1.08057e4	1012.21381	99.4645
4	11.961	MM	0.0578	2.13017	6.14513e-1	0.0196
5	12.774	MM	0.0667	6.65079	1.66167	0.0612
6	14.414	MM	0.0699	10.92106	2.60390	0.1005
7	14.721	MM	0.1146	15.30313	2.22558	0.1409

Totals : 1.08638e4 1025.10526

=====  
\*\*\* End of Report \*\*\*