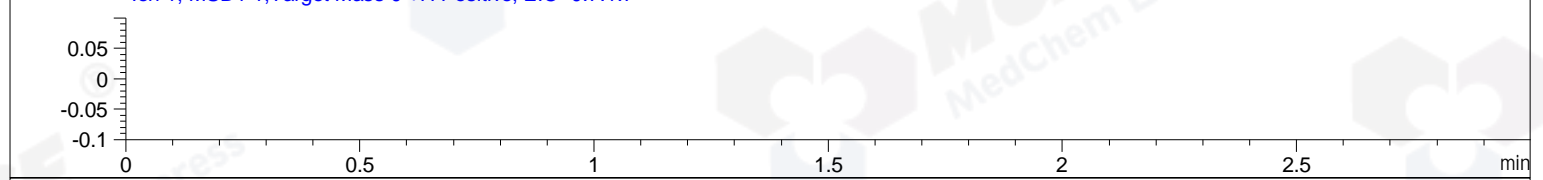
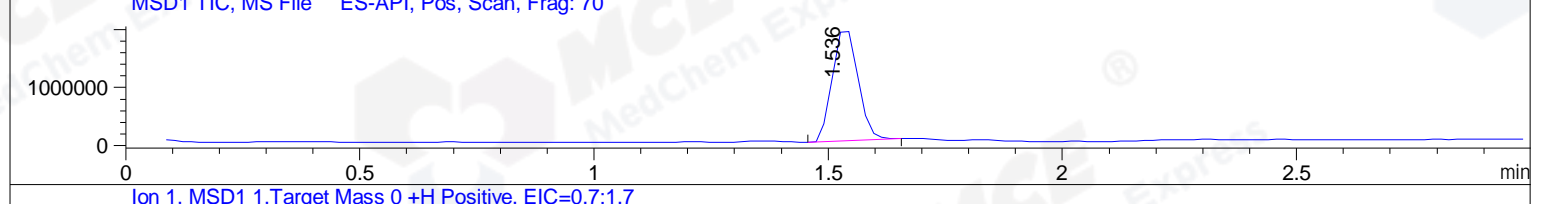
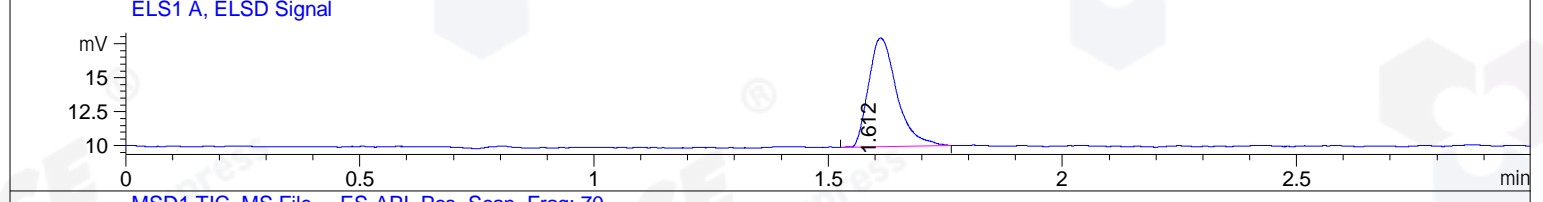
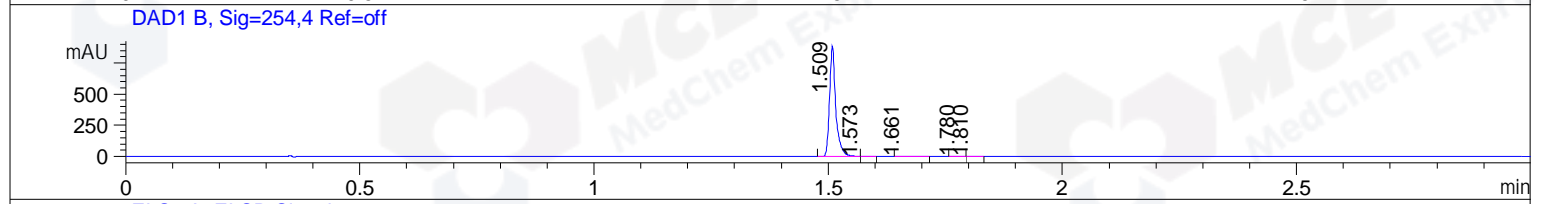
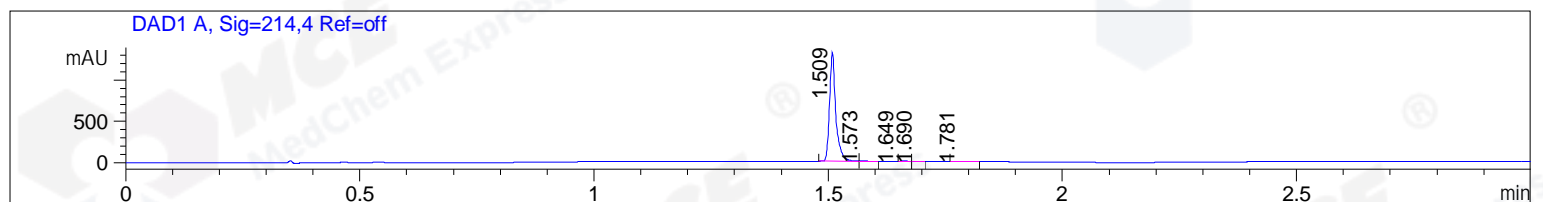


File ..MS03\Data\20190123\20190123\CZ6305-025-P1.D Tgt Mass (CHM):
 Injection Date : 23 Jan 19 4:29 pm +0800 Seq. Line : 95
 Sample Name : CZ6305-025-P1 Location : P2-E-07
 Acq. Operator : SYSTEM Inj : 1
 Spec. Reported : MS Integration Inj Volume : 1 ul
 Acq. Method : D:\LCMS03\Data\20190123\20190123\1-POS-3MIN.M
 Analysis Method : D:\LCMS03\Data\20190123\20190123\1-POS-3MIN.M
 Catalog No : HY-14864A Batch# 39026-20190123
 Method Info : Mobile Phase: A: water(0.01%TFA) B:ACN(0.01%TFA)
 Gradient: 5% to 95%B within 1.3 min
 Flow Rate :1.8ml/min
 Column :SunFire C18, 4.6*50mm,3.5um A-RP-392
 Oven Temperature : 45C



Integration Results for DAD1 A, Sig=214,4 Ref=off

RetTim	Width	Area	Height	Area%	MS (+)
1.51	0.02	1215.84	1313.55	99.40	463
1.57	0.02	1.52	1.56	0.12	463
1.65	0.02	2.44	0.11	0.20	463
1.69	0.02	1.62	1.62	0.13	463
1.78	0.03	1.77	0.96	0.14	463

Integration Results for DAD1 B, Sig=254,4 Ref=off

RetTim	Width	Area	Height	Area%	MS (+)
1.51	0.02	815.52	883.96	99.50	463
1.57	0.01	0.75	0.96	0.09	463
1.66	0.02	2.80	2.24	0.34	463
1.78	0.02	0.38	0.40	0.05	463
1.81	0.02	0.21	0.20	0.03	463

Integration Results for ELS1 A, ELSD Signal

RetTim	Width	Area	Height	Area%	MS (+)
--------	-------	------	--------	-------	--------

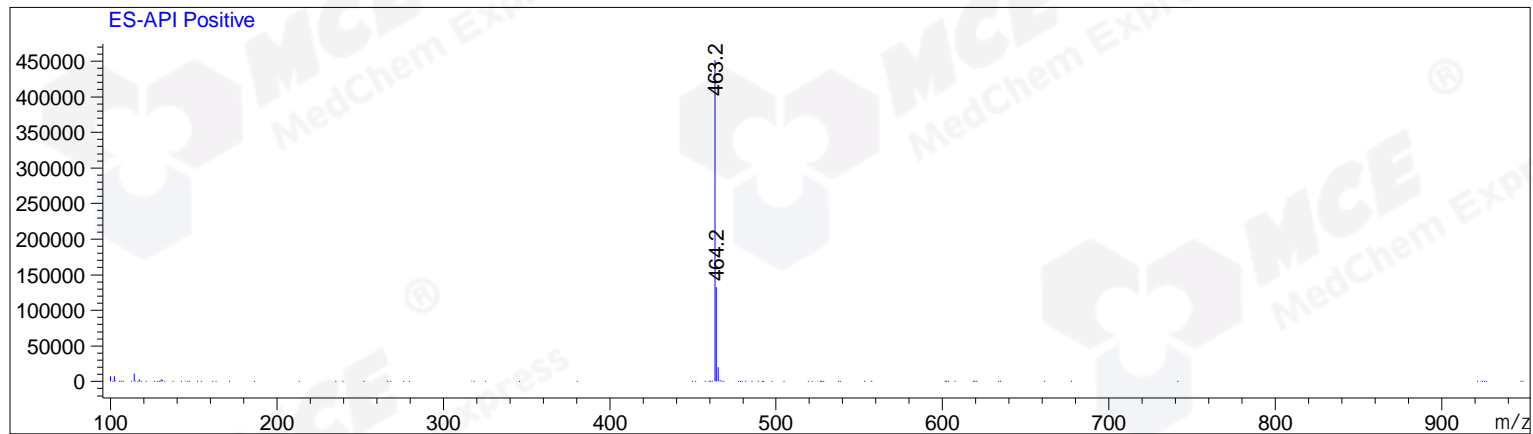
-----|-----|-----|-----|-----|-----|
1.61 0.06 33.78 8.00 100.00 463

Integration Results for MSD1 TIC, MS File

RetTim	Width	Area	Height	Area%	MS (+)
1.54	0.06	7266620.50	1964674.63	100.00	463

Ret. Time: 1.54

<<<< POSITIVE SPECTRA >>>>



*** End of Report ***