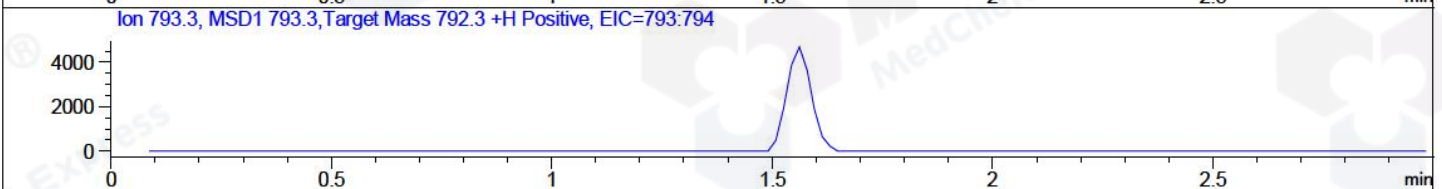
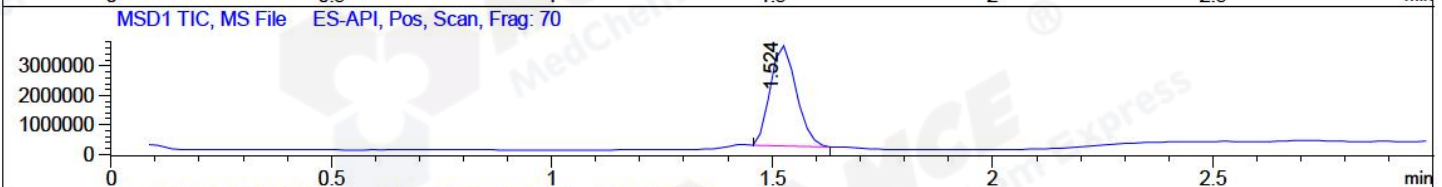
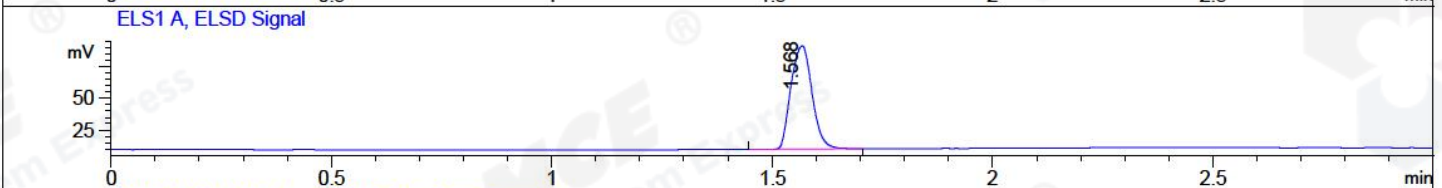
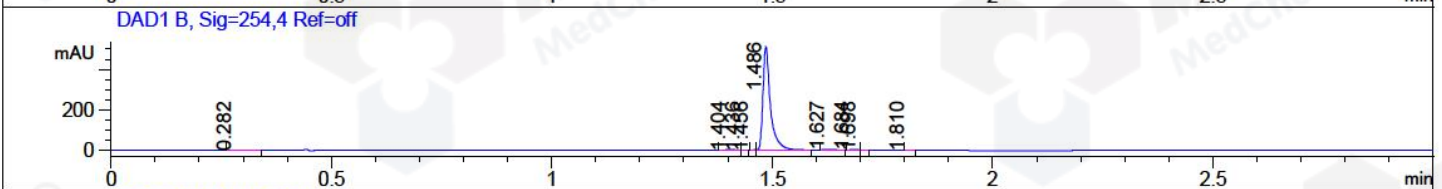
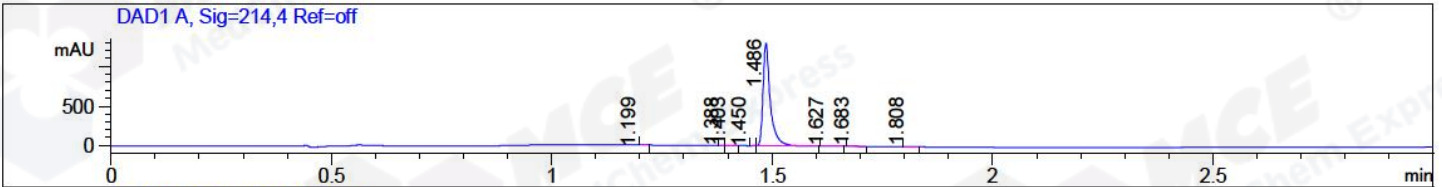


File ..a\2018\20180514\20180514\BIZ2018-514-CXL3.D Tgt Mass (CHM):
 Injection Date : 14 May 18 5:46 pm +0800 Seq. Line : 115
 Sample Name : BIZ2018-514-CXL3 Location : P2-B-10
 Acq. Operator : SYSTEM Inj : 1
 Spec. Reported : MS Integration Inj Volume : 1 ul
 Acq. Method : D:\LCMS03\Data\2018\20180514\20180514\1-POS-3MIN.M
 Analysis Method : D:\LCMS03\Data\2018\20180514\20180514\1-POS-3MIN.M
 Catalog No : HY-15039 Batch#30148
 Method Info : Mobile Phase: A: water(0.01%TFA) B:ACN(0.01%TFA)
 Gradient: 5% to 95%B within 1.3 min
 Flow Rate :1.8ml/min
 Column :SunFire C18, 4.6*50mm,3.5um A-RP-186
 Oven Temperature : 45C



Integration Results for DAD1 A, Sig=214,4 Ref=off

RetTim	Width	Area	Height	Area%	MS (+)
1.20	0.01	0.29	0.04	0.02	279
1.39	0.01	0.52	0.95	0.04	522
1.40	0.01	2.33	2.85	0.16	522
1.45	0.01	0.63	-0.00	0.04	520
1.49	0.02	1469.34	1289.25	99.19	757
1.63	0.02	3.84	3.34	0.26	757
1.68	0.01	3.44	3.52	0.23	963
1.81	0.02	0.97	1.00	0.07	233

Integration Results for DAD1 B, Sig=254,4 Ref=off

RetTim	Width	Area	Height	Area%	MS (+)
0.28	0.02	0.46	0.39	0.08	279
1.40	0.02	1.43	1.48	0.23	522
1.44	0.01	0.05	0.07	0.01	520
1.46	0.01	0.28	0.61	0.05	520
1.49	0.02	601.83	511.81	98.78	757
1.63	0.02	2.62	2.27	0.43	757

1.68	0.02	2.01	2.13	0.33	963
1.70	0.01	0.25	0.50	0.04	233
1.81	0.01	0.35	0.44	0.06	233

Integration Results for ELS1 A, ELSD Signal

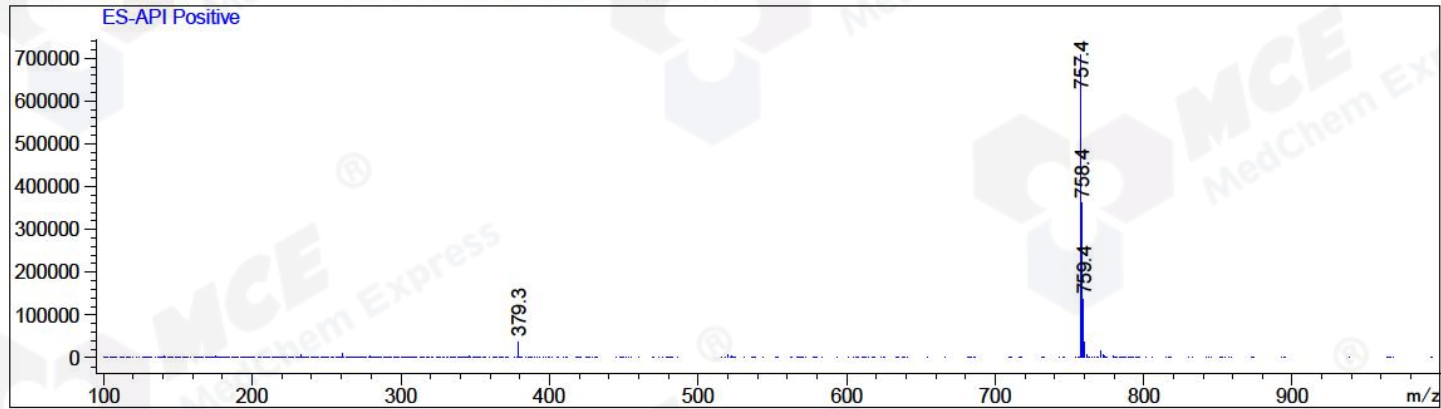
RetTim	Width	Area	Height	Area%	MS (+)
1.57	0.05	270.36	81.17	100.00	757

Integration Results for MSD1 TIC, MS File

RetTim	Width	Area	Height	Area%	MS (+)
1.52	0.06	13950452.00	3416446.75	100.00	757

Ret. Time: 1.52

<<<< POSITIVE SPECTRA >>>>



*** End of Report ***