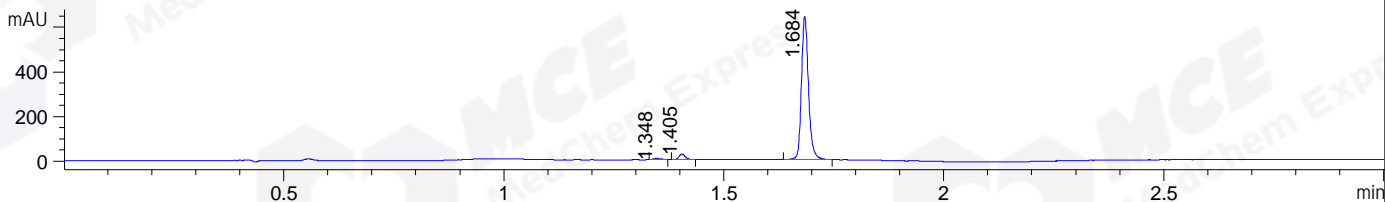
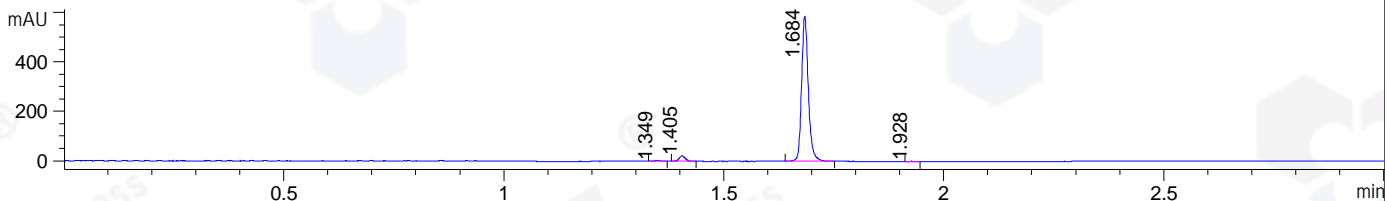


File ..DATA\2020\20200303\856\CPK2020-302-07553-.D Tgt Mass (CHM):
Injection Date : 3 Mar 20 1:28 pm +0800 Seq. Line : 58
Sample Name : CPK2020-302-07553 Location : P1-B-03
Acq. Operator : ZJ_1432 Inj : 1
Spec. Reported : MS Integration Inj Volume : 0.5 ul
Acq. Method : D:\Chem32\1\data\2020\20200303\856\1-POS-3MIN.M
Analysis Method : D:\CHEM32\1\DATA\2020\20200303\856\1-POS-3MIN.M
Catalog No : HY-15064 Batch#07553
Method Info : Mobile Phase: A: water(0.01%TFA) B:ACN(0.01%TFA)
Gradient: 5% to 95%B within 1.3 min
Flow Rate :1.8ml/min
Column :SunFire C18, 4.6*50mm,3.5um A-RP-433
Oven Temperature : 45□

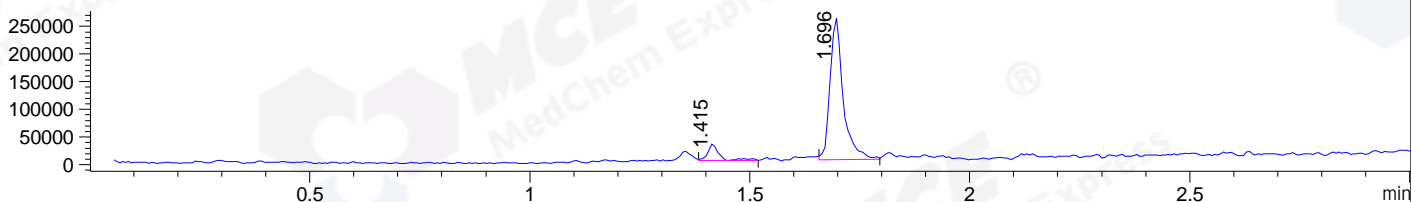
DAD1 B, Sig=214,4 Ref=off



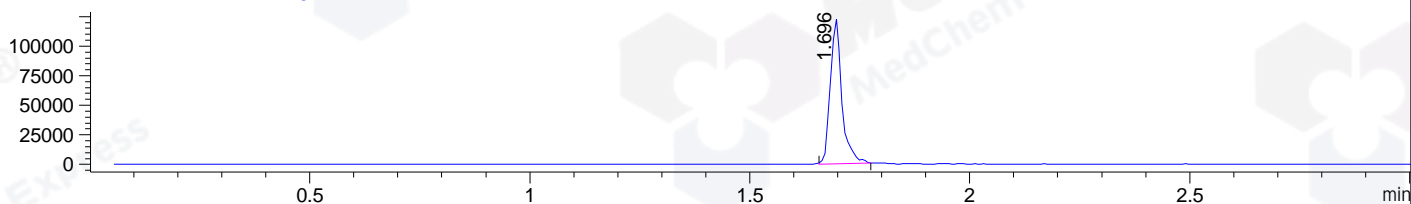
DAD1 C, Sig=254,4 Ref=off



MSD1 TIC, MS File ES-API, Pos, Scan, Frag: 70



Ion 356, MSD1 356, Target Mass 355 +H Positive, EIC=355.7:356.7



Integration Results for DAD1 B, Sig=214,4 Ref=off

RetTim	Width	Area	Height	Area%	MS (+)
1.35	0.02	6.16	5.52	0.83	578
1.40	0.02	25.60	25.74	3.44	388
1.68	0.02	713.10	641.93	95.74	356

Integration Results for DAD1 C, Sig=254,4 Ref=off

RetTim	Width	Area	Height	Area%	MS (+)
1.35	0.02	3.53	2.79	0.54	578
1.40	0.02	22.10	22.28	3.40	388
1.68	0.02	623.58	586.61	95.91	356
1.93	0.01	0.95	1.11	0.15	ND

Integration Results for MSD1 TIC, MS File

RetTim	Width	Area	Height	Area%	MS (+)
1.42	0.03	56395.95	29751.75	9.43	388
1.70	0.03	541427.25	256548.31	90.57	356

Ret. Time: 1.42

<<<< POSITIVE SPECTRA >>>>

ES-API Positive



Ret. Time: 1.70

ES-API Positive

