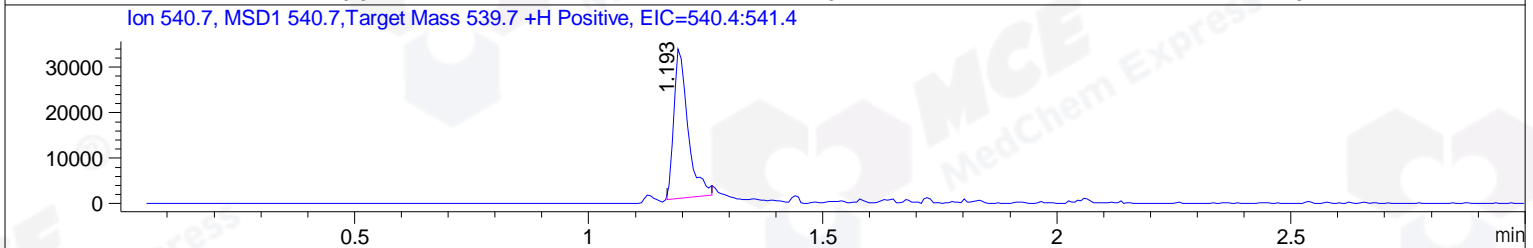
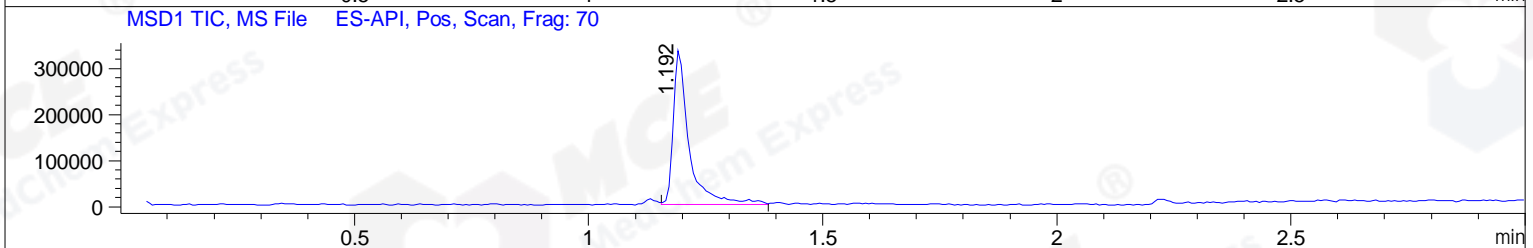
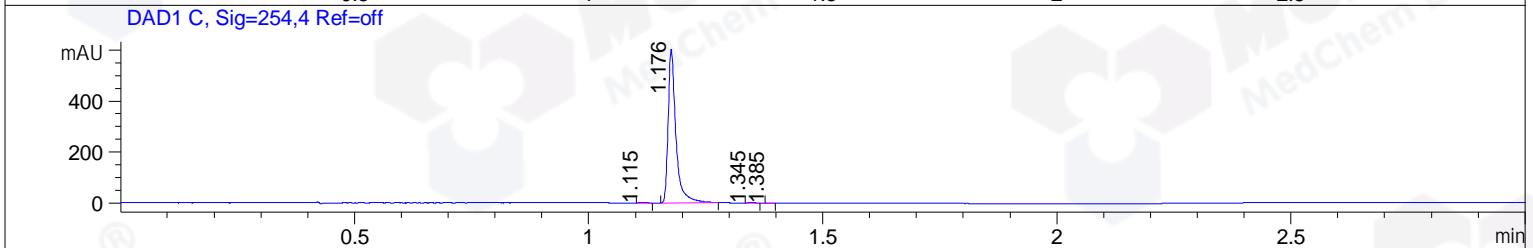
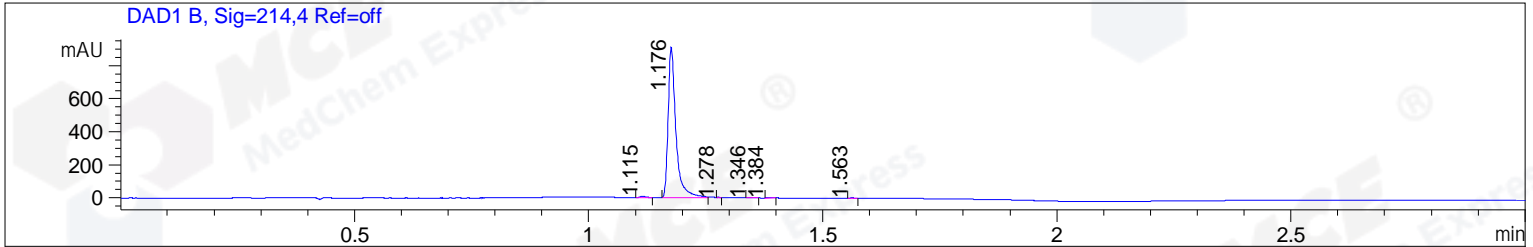


File ..\DATA\2019\20190423\568\CPK2019-423-11118.D Tgt Mass (CHM):
 Injection Date : 23 Apr 19 5:23 pm +0800 Seq. Line : 15
 Sample Name : CPK2019-423-11118 Location : P1-E-06
 Acq. Operator : LQ_1052 Inj : 1
 Spec. Reported : MS Integration Inj Volume : 1 ul
 Acq. Method : D:\Chem32\1\data\2019\20190423\568\1-POS-3MIN-1.M
 Analysis Method : D:\CHEM32\1\DATA\2019\20190423\568\1-POS-3MIN-1.M
 Catalog No : HY-15227 Batch#11118 BY ACN
 Method Info : Mobile Phase: A: water(0.01%TFA) B:ACN(0.01%TFA)
 Gradient: 5% to 95%B within 1.3 min
 Flow Rate :1.8ml/min
 Column :SunFire C18, 4.6*50mm,3.5um A-RP-322
 Oven Temperature : 45



Integration Results for DAD1 B, Sig=214,4 Ref=off

RetTim	Width	Area	Height	Area%	MS (+)
1.11	0.02	7.44	8.07	0.70	540
1.18	0.02	1052.40	913.02	99.00	271
1.28	0.01	0.22	0.53	0.02	540
1.35	0.01	1.59	1.99	0.15	540
1.38	0.01	0.48	0.53	0.05	540
1.56	0.01	0.89	1.24	0.08	176

Integration Results for DAD1 C, Sig=254,4 Ref=off

RetTim	Width	Area	Height	Area%	MS (+)
1.12	0.02	2.08	2.28	0.30	540
1.18	0.02	693.61	603.34	99.46	271
1.35	0.02	1.53	1.63	0.22	540
1.39	0.01	0.18	0.26	0.03	540

Integration Results for MSD1 TIC, MS File

RetTim	Width	Area	Height	Area%	MS (+)
--------	-------	------	--------	-------	--------

1.19 0.03 788077.75 335006.34 100.00 271

Ret. Time: 1.19

<<<< POSITIVE SPECTRA >>>>

ES-API Positive

