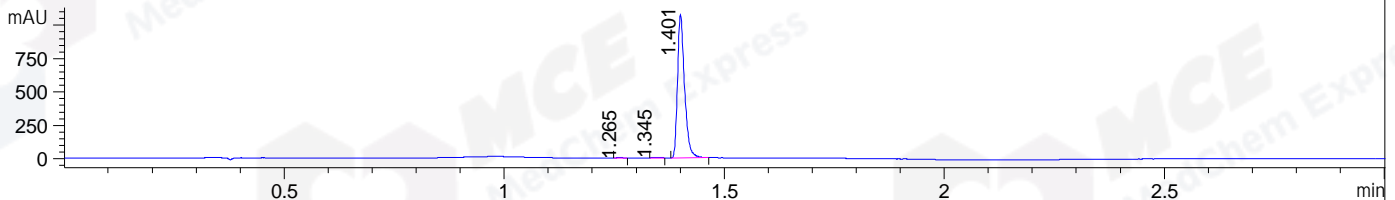
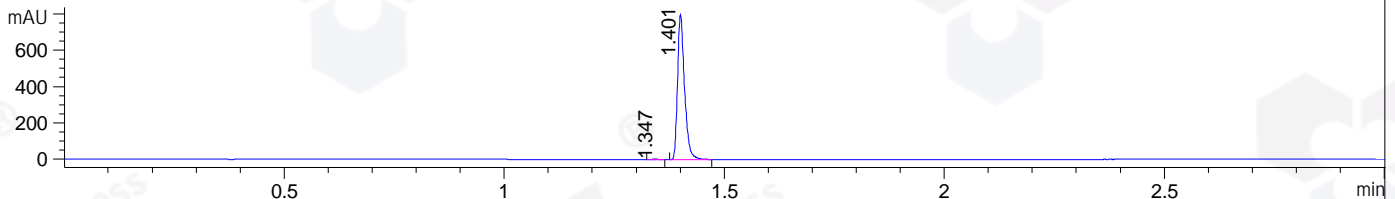


File ..\DATA\2019\20191126\777\CPK2019-N25-21770.D Tgt Mass (CHM):
 Injection Date : 26 Nov 19 6:41 pm +0800 Seq. Line : 125
 Sample Name : CPK2019-N25-21770 Location : P1-D-05
 Acq. Operator : ZJ_1432 Inj : 1
 Spec. Reported : MS Integration Inj Volume : 1 ul
 Acq. Method : D:\Chem32\1\data\2019\20191126\777\1-POS-3MIN.M
 Analysis Method : D:\CHEM32\1\DATA\2019\20191126\777\1-POS-3MIN.M
 Catalog No : HY-15245 Batch# 21770
 Method Info : Mobile Phase: A: water(0.01%TFA) B:ACN(0.01%TFA)
 Gradient: 5% to 95%B within 1.3 min
 Flow Rate :1.8ml/min
 Column :SunFire C18, 4.6*50mm,3.5um A-RP-433
 Oven Temperature : 45

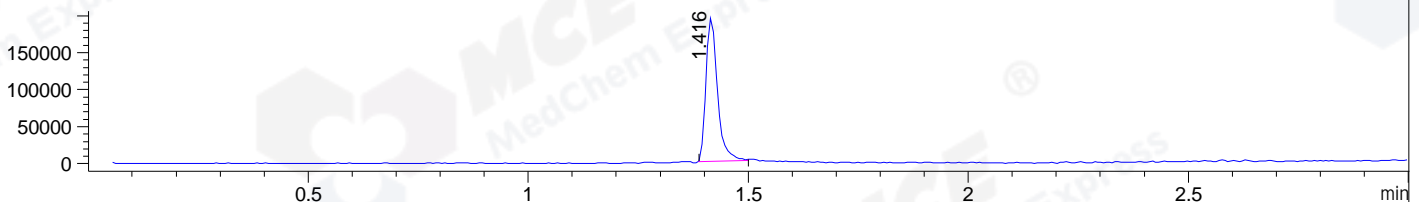
DAD1 B, Sig=214,4 Ref=off



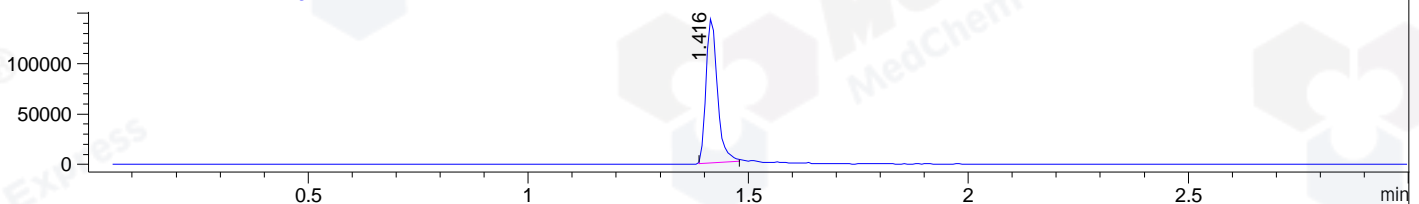
DAD1 C, Sig=254,4 Ref=off



MSD1 TIC, MS File ES-API, Pos, Scan, Frag: 70



Ion 434, MSD1 434, Target Mass 433 +H Positive, EIC=433.7:434.7



Integration Results for DAD1 B, Sig=214,4 Ref=off

RetTim	Width	Area	Height	Area%	MS (+)
1.27	0.02	2.12	1.96	0.18	ND
1.35	0.02	3.90	3.43	0.33	ND
1.40	0.02	1191.26	1074.93	99.50	434

Integration Results for DAD1 C, Sig=254,4 Ref=off

RetTim	Width	Area	Height	Area%	MS (+)
1.35	0.02	1.26	1.06	0.14	ND
1.40	0.02	882.72	801.00	99.86	434

Integration Results for MSD1 TIC, MS File

RetTim	Width	Area	Height	Area%	MS (+)
1.42	0.03	353742.63	194261.56	100.00	434

Ret. Time: 1.42

<<<< POSITIVE SPECTRA >>>>

ES-API Positive

