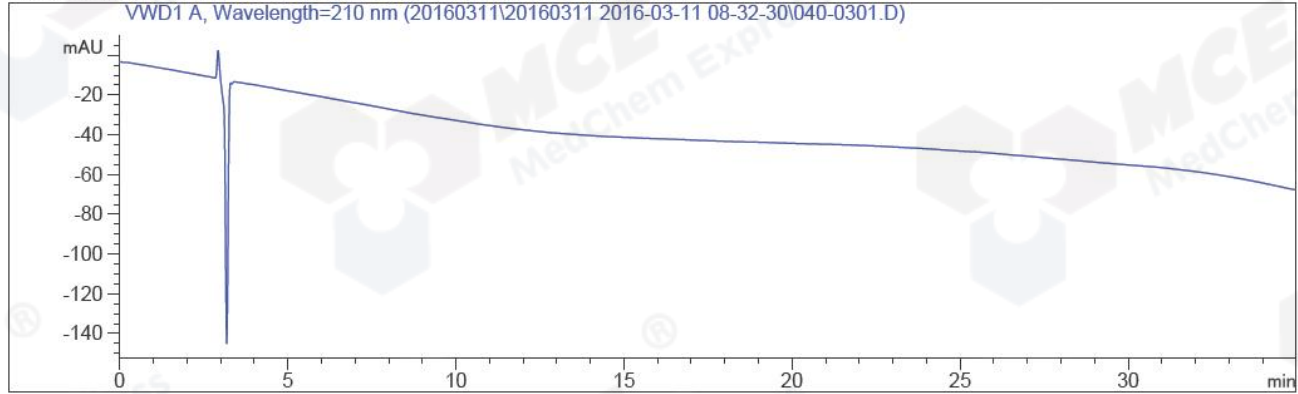


```
=====
Acq. Operator   : CSS (HPLC-10)                      Seq. Line :    3
Acq. Instrument : Instrument 1                        Location  : Vial 40
Injection Date  : 2016-03-11 09:42:05                Inj       :    1
                                                    Inj Volume: 5.000 µl
Acq. Method     : D:\CHEM\DATA\20160311\20160311 2016-03-11 08-32-30\HY-15319-H01EE,210NM-1.M
Last changed    : 2016-03-11 09:15:54 by CSS (HPLC-10)
                  (modified after loading)
Analysis Method : D:\CHEM\M\HY-273A_8A,270NM.M
Last changed    : 2016-03-11 12:13:24 by CSS (HPLC-10)
                  (modified after loading)
Catalog No     : HY-15319 Batch#19750
                  C-NP-17
=====
```

Additional Info : Peak(s) manually integrated



=====
Area Percent Report
=====

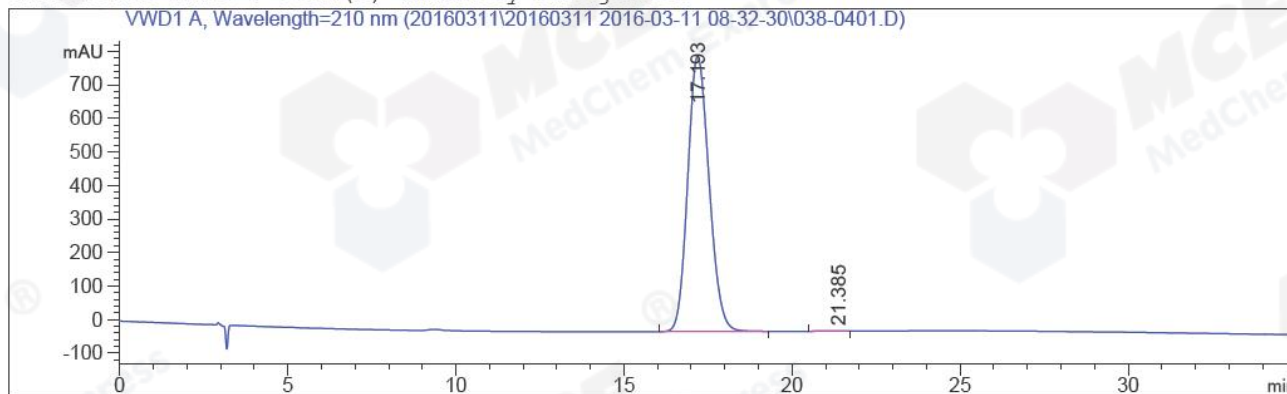
```
Sorted By      :      Signal
Multiplier:    :      1.0000
Dilution:      :      1.0000
Use Multiplier & Dilution Factor with ISTDs
```

No peaks found

=====
*** End of Report ***
=====

=====
Acq. Operator : CSS(HPLC-10) Seq. Line : 4
Acq. Instrument : Instrument 1 Location : Vial 38
Injection Date : 2016-03-11 10:18:32 Inj : 1
Inj Volume : 5.000 µl
Different Inj Volume from Sequence ! Actual Inj Volume : 3.000 µl
Acq. Method : D:\CHEM\DATA\20160311\20160311 2016-03-11 08-32-30\HY-15319-H01EE,210NM-1.M
Last changed : 2016-03-11 09:15:54 by CSS(HPLC-10)
(modified after loading)
Analysis Method : D:\CHEM\M\HY-273A_8A,270NM.M
Last changed : 2016-03-11 12:13:24 by CSS(HPLC-10)
(modified after loading)
Catalog No : HY-15319 Batch#19750
C-NP-17

Additional Info : Peak(s) manually integrated



=====
Area Percent Report
=====

Sorted By : Signal
Multiplier: : 1.0000
Dilution: : 1.0000
Use Multiplier & Dilution Factor with ISTDs

Signal 1: VWD1 A, Wavelength=210 nm

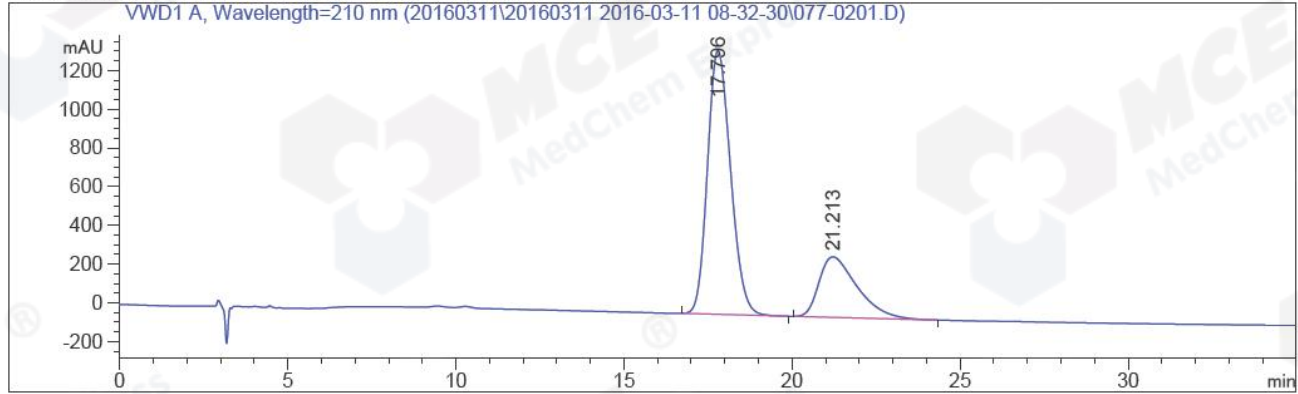
Peak #	RetTime [min]	Type	Width [min]	Area [mAU*s]	Height [mAU]	Area %
1	17.193	MM	0.7358	3.62306e4	820.71039	99.9864
2	21.385	MM	0.7290	4.91597	7.97700e-2	0.0136

Totals : 3.62355e4 820.79016

=====
*** End of Report ***

=====
Acq. Operator : CSS (HPLC-10) Seq. Line : 2
Acq. Instrument : Instrument 1 Location : Vial 77
Injection Date : 2016-03-11 09:05:30 Inj : 1
Inj Volume : 5.000 µl
Acq. Method : D:\CHEM\DATA\20160311\20160311 2016-03-11 08-32-30\HY-15319-H01EE,210NM-1.M
Last changed : 2016-03-11 09:15:54 by CSS (HPLC-10)
(modified after loading)
Analysis Method : D:\CHEM\M\HY-273A_8A,270NM.M
Last changed : 2016-03-11 12:13:24 by CSS (HPLC-10)
(modified after loading)
Catalog No : HY-15319 Batch#19750
C-NP-17
=====

Additional Info : Peak(s) manually integrated



=====
Area Percent Report
=====

Sorted By : Signal
Multiplier: : 1.0000
Dilution: : 1.0000
Use Multiplier & Dilution Factor with ISTDs

Signal 1: VWD1 A, Wavelength=210 nm

Peak #	RetTime [min]	Type	Width [min]	Area [mAU*s]	Height [mAU]	Area %
1	17.796	BB	0.7471	6.51547e4	1361.93921	72.5634
2	21.213	BB	1.1926	2.46353e4	312.55420	27.4366

Totals : 8.97901e4 1674.49341

=====
*** End of Report ***
=====