

File ..018\20180226\20180226\CPK2018-223-15936_1.D Tgt Mass (CHM):

Injection Date : 26 Feb 18 12:47 pm +0800 Seq. Line : 54

Sample Name : CPK2018-223-15936 Location : P1-C-10

Acq. Operator : SYSTEM Inj : 1

Spec. Reported : MS Integration Inj Volume : 0.5 ul

Acq. Method : D:\LCMS03\Data\2018\20180226\20180226\1-POS-3MIN.M

Analysis Method : D:\LCMS03\Data\2018\20180226\20180226\1-POS-3MIN.M

Catalog No : HY-15419 Batch#15936

Method Info : Mobile Phase: A: water(0.01%TFA) B:ACN(0.01%TFA)

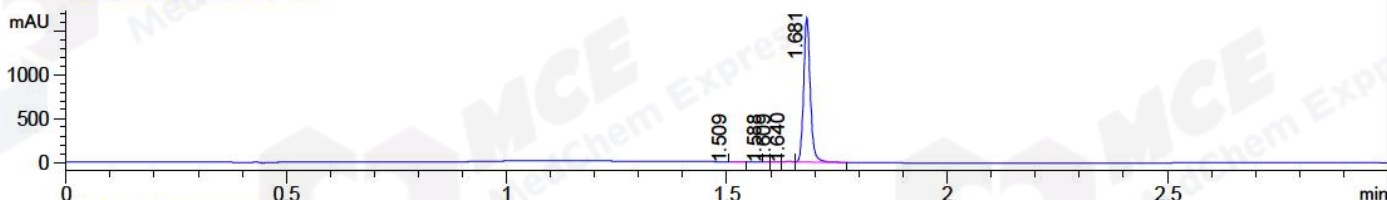
Gradient: 5% to 95%B within 1.3 min

Flow Rate :1.8ml/min

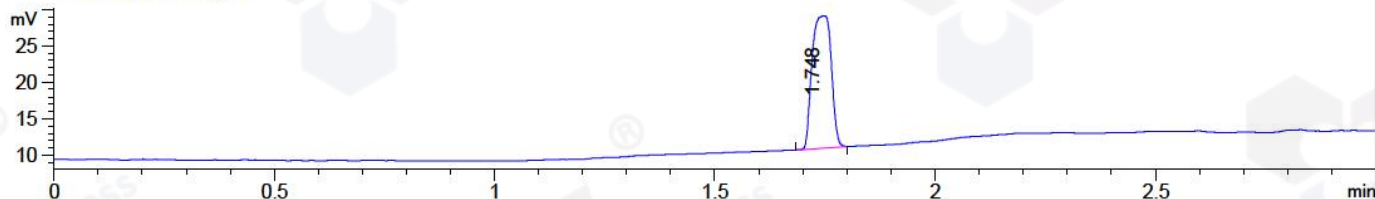
Column :SunFire C18, 4.6*50mm,3.5um A-RP-186

Oven Temperature : 45C

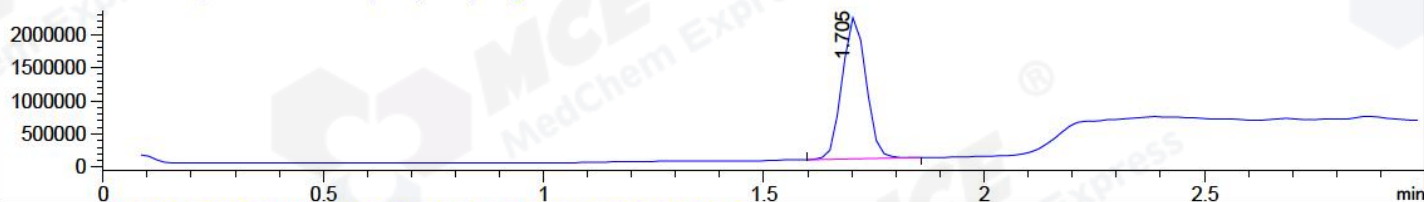
DAD1 A, Sig=214,4 Ref=off



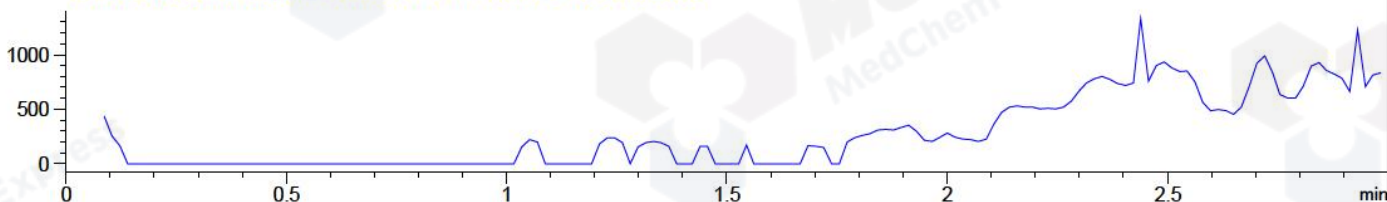
ELS1 A, ELSD Signal



MSD1 TIC, MS File ES-API, Pos, Scan, Frag: 70



Ion 318.8, MSD1 318.8, Target Mass 317.8 +H Positive, EIC=318.5:319.5



Integration Results for DAD1 A, Sig=214,4 Ref=off

RetTim	Width	Area	Height	Area%	MS (+)
1.51	0.02	0.32	0.24	0.02	102
1.59	0.01	0.06	0.10	0.00	105
1.61	0.01	0.94	1.19	0.05	105
1.64	0.01	4.15	4.90	0.24	308
1.68	0.02	1716.62	1641.53	99.68	282

Integration Results for ELS1 A, ELSD Signal

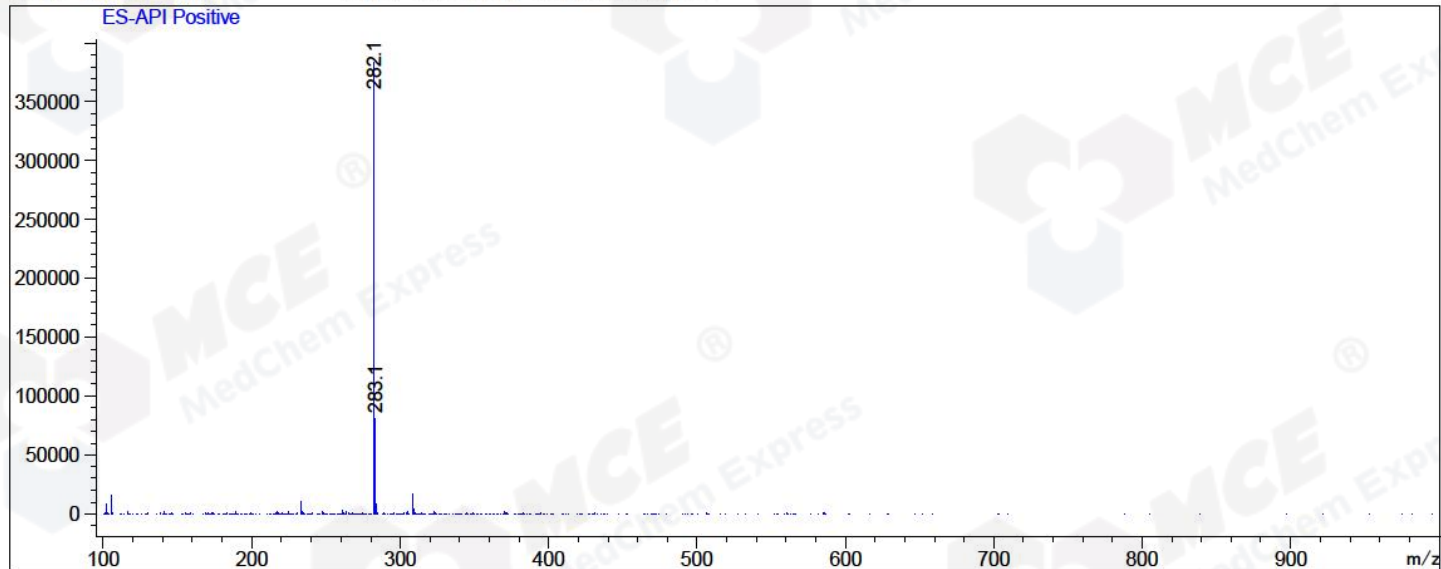
RetTim	Width	Area	Height	Area%	MS (+)
1.75	0.05	54.70	18.20	100.00	282

Integration Results for MSD1 TIC, MS File

RetTim	Width	Area	Height	Area%	MS (+)
1.70	0.06	8039945.50	2147660.75	100.00	282

Ret. Time: 1.70

<<<< POSITIVE SPECTRA >>>>



*** End of Report ***