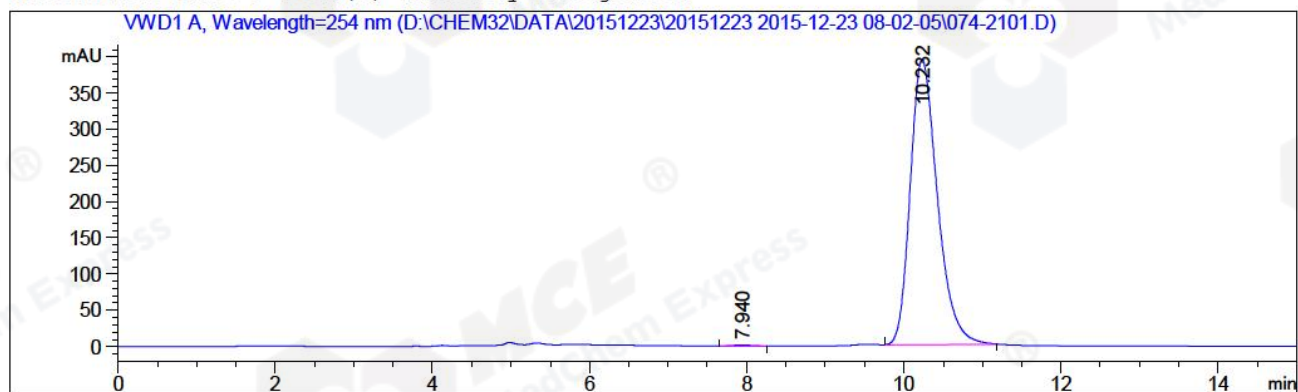


=====
Acq. Operator : CYL(HPLC-09) Seq. Line : 21
Acq. Instrument : Instrument 1 Location : Vial 74
Injection Date : 12/23/2015 2:07:23 PM Inj : 1
Inj Volume : 5.000 µl
Different Inj Volume from Sequence ! Actual Inj Volume : 10.000 µl
Acq. Method : D:\CHEM32\DATA\20151223\20151223 2015-12-23 08-02-05\HY-15427A-H01EE,254NM,
C2.M
Last changed : 12/23/2015 1:31:46 PM by CYL(HPLC-09)
(modified after loading)
Analysis Method : D:\CHEM32\METHODS\RP-HPLC\10-80A(210NM).M
Last changed : 12/23/2015 2:44:41 PM by CYL(HPLC-09)
(modified after loading)
Catalog No : HY-15427 Batch#19188
C-NP-13
=====

Additional Info : Peak(s) manually integrated



=====
Area Percent Report
=====

Sorted By : Signal
Multiplier: : 1.0000
Dilution: : 1.0000
Use Multiplier & Dilution Factor with ISTDs

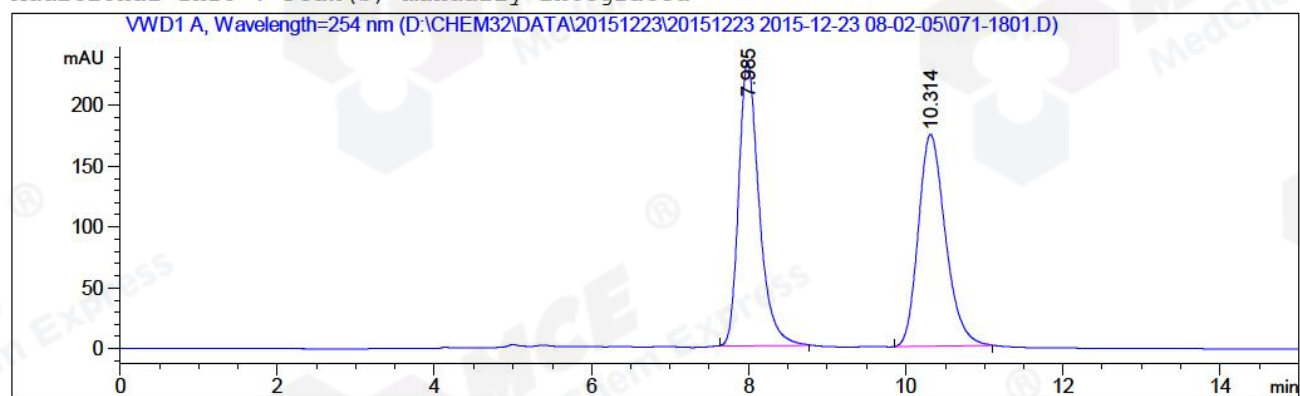
Signal 1: VWD1 A, Wavelength=254 nm

Peak #	RetTime [min]	Type	Width [min]	Area [mAU*s]	Height [mAU]	Area %
1	7.940	MM	0.3124	32.44409	1.73092	0.3424
2	10.232	BB	0.3681	9442.49707	393.33011	99.6576
Totals :				9474.94116	395.06103	

=====
*** End of Report ***

=====
Acq. Operator : CYL(HPLC-09) Seq. Line : 18
Acq. Instrument : Instrument 1 Location : Vial 71
Injection Date : 12/23/2015 1:18:02 PM Inj : 1
Inj Volume : 5.000 µl
Acq. Method : D:\CHEM32\DATA\20151223\20151223 2015-12-23 08-02-05\HY-15427A-H01EE,254NM,
C2.M
Last changed : 12/23/2015 1:31:46 PM by CYL(HPLC-09)
(modified after loading)
Analysis Method : D:\CHEM32\METHODS\RP-HPLC\10-80A(210NM).M
Last changed : 12/23/2015 2:43:48 PM by CYL(HPLC-09)
(modified after loading)
Catalog No : HY-15427 Batch#19188
C-NP-13
=====

Additional Info : Peak(s) manually integrated



=====
Area Percent Report
=====

Sorted By : Signal
Multiplier: : 1.0000
Dilution: : 1.0000
Use Multiplier & Dilution Factor with ISTDs

Signal 1: VWD1 A, Wavelength=254 nm

Peak #	RetTime [min]	Type	Width [min]	Area [mAU*s]	Height [mAU]	Area %
1	7.985	BB	0.2731	4201.81787	233.28488	50.1063
2	10.314	BB	0.3692	4183.99414	174.21519	49.8937
Totals :				8385.81201	407.50008	

=====
*** End of Report ***
=====