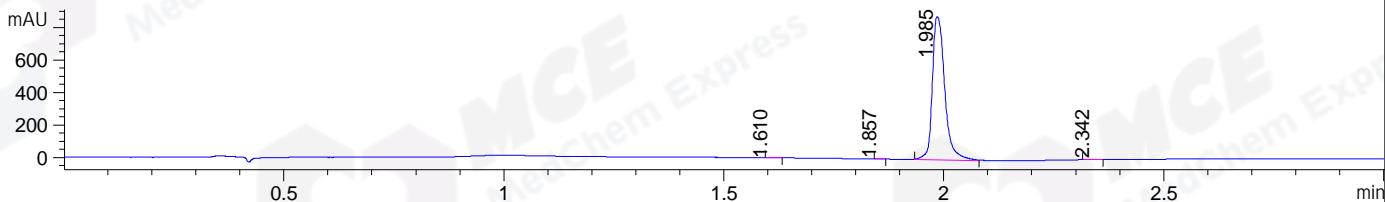
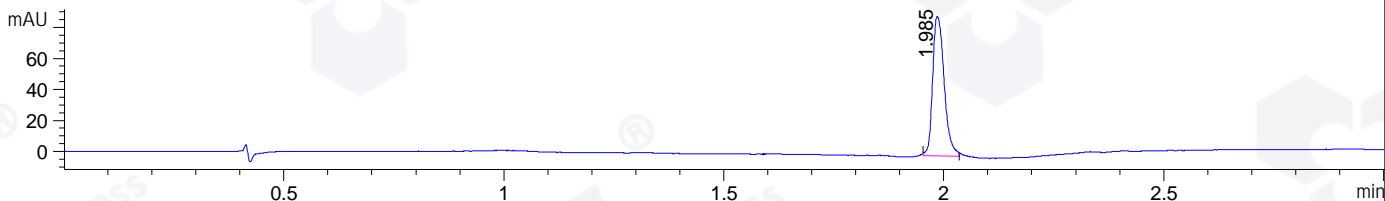


File ..DATA\2019\20190327\567\BIZ2019-326-WYQ5.D Tgt Mass (CHM) :
 Injection Date : 27 Mar 19 1:01 pm +0800 Seq. Line : 44
 Sample Name : BIZ2019-326-WYQ5 Location : P1-C-05
 Acq. Operator : LQ_1052 Inj : 1
 Spec. Reported : MS Integration Inj Volume : 3 ul
 Acq. Method : D:\Chem32\1\data\2019\20190327\567\1-POS-3MIN-1.M
 Analysis Method : D:\CHEM32\1\DATA\2019\20190327\567\1-POS-3MIN-1.M
 Catalog No : HY-15459 Batch#39353
 Method Info : Mobile Phase: A: water(0.01%TFA) B:ACN(0.01%TFA)
 Gradient: 5% to 95%B within 1.3 min
 Flow Rate :1.8ml/min
 Column :SunFire C18, 4.6*50mm,3.5um A-RP-314
 Oven Temperature : 45□

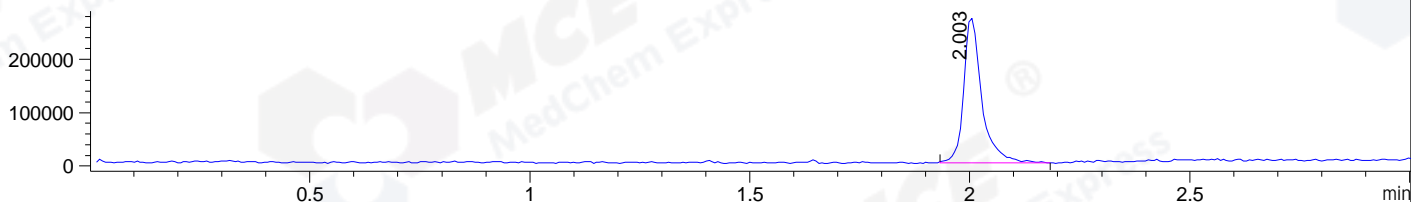
DAD1 B, Sig=214,4 Ref=off



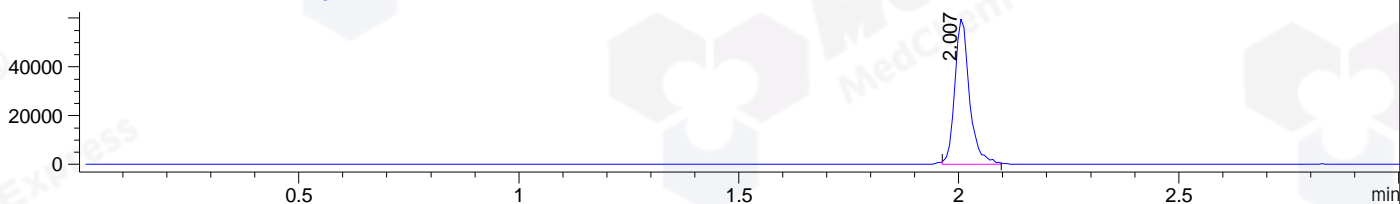
DAD1 C, Sig=254,4 Ref=off



MSD1 TIC, MS File ES-API, Pos, Scan, Frag: 70



Ion 836.3, MSD1 836.3, Target Mass 836.3 +H Positive, EIC=836:837



Integration Results for DAD1 B, Sig=214,4 Ref=off

RetTim	Width	Area	Height	Area%	MS (+)
1.61	0.02	1.76	1.34	0.10	ND
1.86	0.01	0.63	0.70	0.04	ND
1.99	0.03	1731.39	881.44	99.77	836
2.34	0.03	1.55	0.96	0.09	142

Integration Results for DAD1 C, Sig=254,4 Ref=off

RetTim	Width	Area	Height	Area%	MS (+)
1.99	0.03	164.10	90.02	100.00	836

Integration Results for MSD1 TIC, MS File

RetTim	Width	Area	Height	Area%	MS (+)
2.00	0.04	782346.63	272568.69	100.00	836

Ret. Time: 2.00

<<<< POSITIVE SPECTRA >>>>

ES-API Positive

