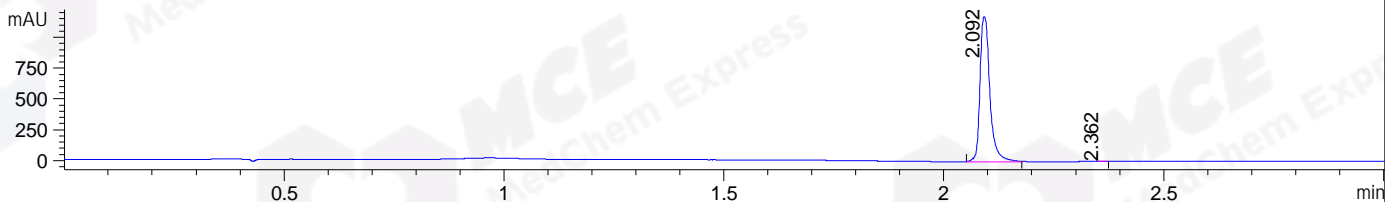
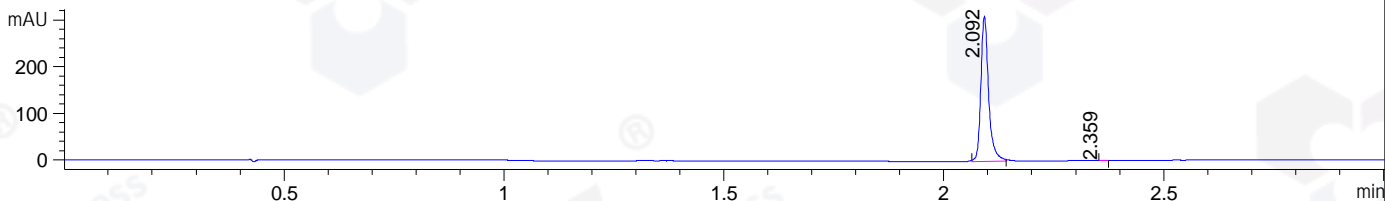


File ..\DATA\2019\20190215\552\CPK2019-214-09215.D Tgt Mass (CHM) :
 Injection Date : 15 Feb 19 12:25 pm +0800 Seq. Line : 40
 Sample Name : CPK2019-214-09215 Location : P1-F-03
 Acq. Operator : LQ_1052 Inj : 1
 Spec. Reported : MS Integration Inj Volume : 1 ul
 Acq. Method : D:\Chem32\1\data\2019\20190215\552\1-POS-3MIN-1.M
 Analysis Method : D:\CHEM32\1\DATA\2019\20190215\552\1-POS-3MIN-1.M
 Catalog No : HY-15515 Batch#09215
 Method Info : Mobile Phase: A: water(0.01%TFA) B:ACN(0.01%TFA)
 Gradient: 5% to 95%B within 1.3 min
 Flow Rate :1.8ml/min
 Column :SunFire C18, 4.6*50mm,3.5um A-RP-314
 Oven Temperature : 45

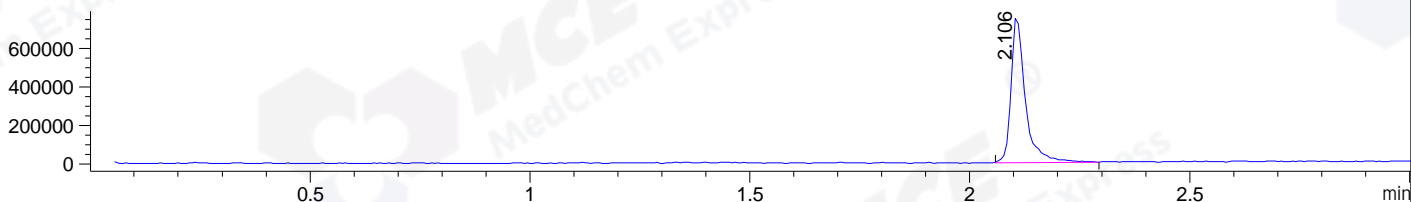
DAD1 B, Sig=214,4 Ref=off



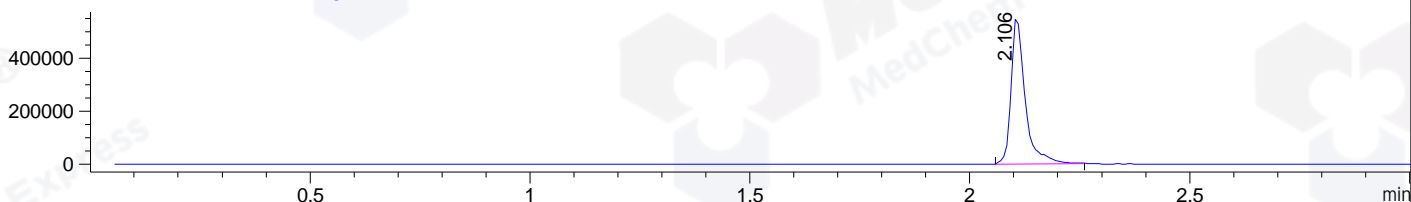
DAD1 C, Sig=254,4 Ref=off



MSD1 TIC, MS File ES-API, Pos, Scan, Frag: 70



Ion 372.4, MSD1 372.4, Target Mass 371.4 +H Positive, EIC=372.1:373.1



Integration Results for DAD1 B, Sig=214,4 Ref=off

RetTim	Width	Area	Height	Area%	MS (+)
2.09	0.02	1850.10	1179.20	99.97	372
2.36	0.02	0.61	0.54	0.03	372

Integration Results for DAD1 C, Sig=254,4 Ref=off

RetTim	Width	Area	Height	Area%	MS (+)
2.09	0.02	379.94	311.08	99.95	372
2.36	0.01	0.18	0.23	0.05	372

Integration Results for MSD1 TIC, MS File

RetTim	Width	Area	Height	Area%	MS (+)
2.11	0.03	1716277.13	763297.75	100.00	372

Ret. Time: 2.11

<<<< POSITIVE SPECTRA >>>>

ES-API Positive

