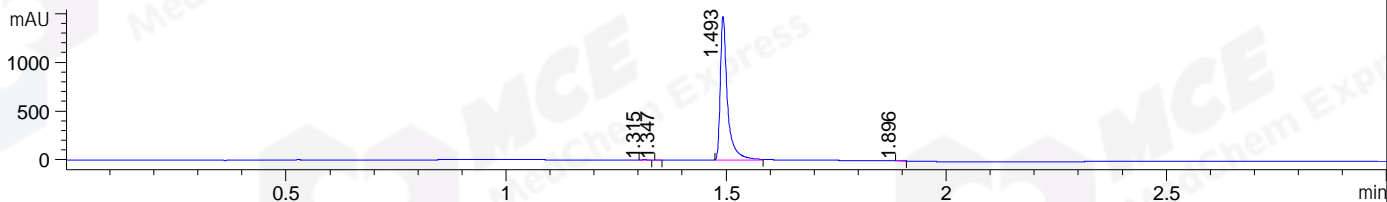
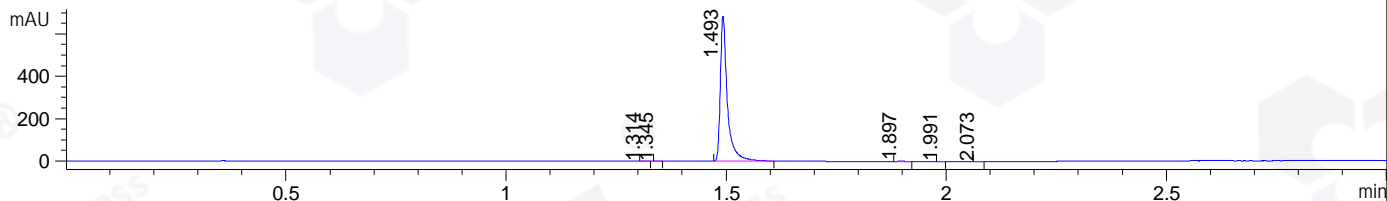


File ..\DATA\2019\20190423\568\CPK2019-423-11201.D Tgt Mass (CHM):
 Injection Date : 23 Apr 19 5:28 pm +0800 Seq. Line : 16
 Sample Name : CPK2019-423-11201 Location : P1-E-07
 Acq. Operator : LQ_1052 Inj : 1
 Spec. Reported : MS Integration Inj Volume : 1 ul
 Acq. Method : D:\Chem32\1\data\2019\20190423\568\1-POS-3MIN-1.M
 Analysis Method : D:\CHEM32\1\DATA\2019\20190423\568\1-POS-3MIN-1.M
 Catalog No : HY-15857 Batch#11201 BY MEOH
 Method Info : Mobile Phase: A: water(0.01%TFA) B:ACN(0.01%TFA)
 Gradient: 5% to 95%B within 1.3 min
 Flow Rate :1.8ml/min
 Column :SunFire C18, 4.6*50mm,3.5um A-RP-322
 Oven Temperature : 45

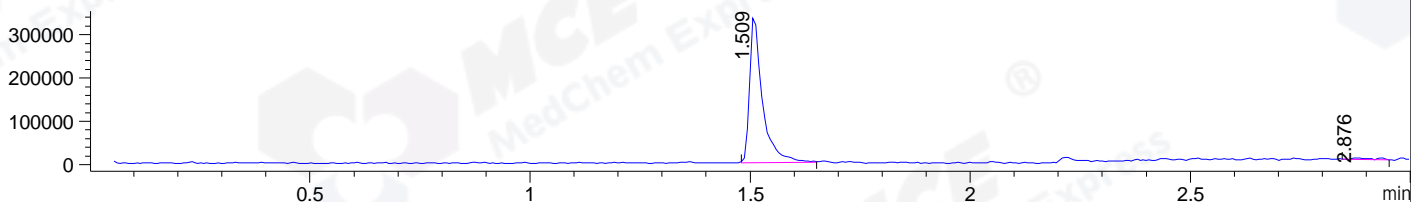
DAD1 B, Sig=214,4 Ref=off



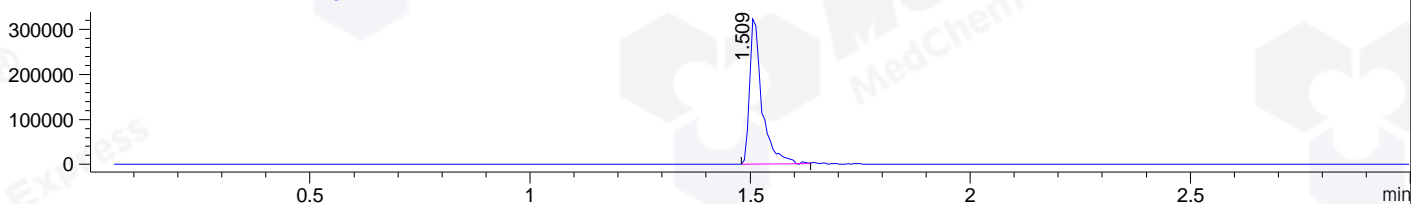
DAD1 C, Sig=254,4 Ref=off



MSD1 TIC, MS File ES-API, Pos, Scan, Frag: 70



Ion 501.3, MSD1 501.3, Target Mass 500.3 +H Positive, EIC=501:502



Integration Results for DAD1 B, Sig=214,4 Ref=off

RetTim	Width	Area	Height	Area%	MS (+)
1.32	0.01	2.08	2.59	0.13	ND
1.35	0.01	0.50	0.86	0.03	ND
1.49	0.02	1661.25	1474.55	99.75	501
1.90	0.01	1.53	2.01	0.09	ND

Integration Results for DAD1 C, Sig=254,4 Ref=off

RetTim	Width	Area	Height	Area%	MS (+)
1.31	0.01	1.33	1.69	0.17	ND
1.35	0.01	0.17	0.23	0.02	ND
1.49	0.02	757.63	686.05	99.42	501
1.90	0.02	2.51	2.29	0.33	ND
1.99	0.01	0.18	0.26	0.02	ND
2.07	0.01	0.20	0.23	0.03	ND

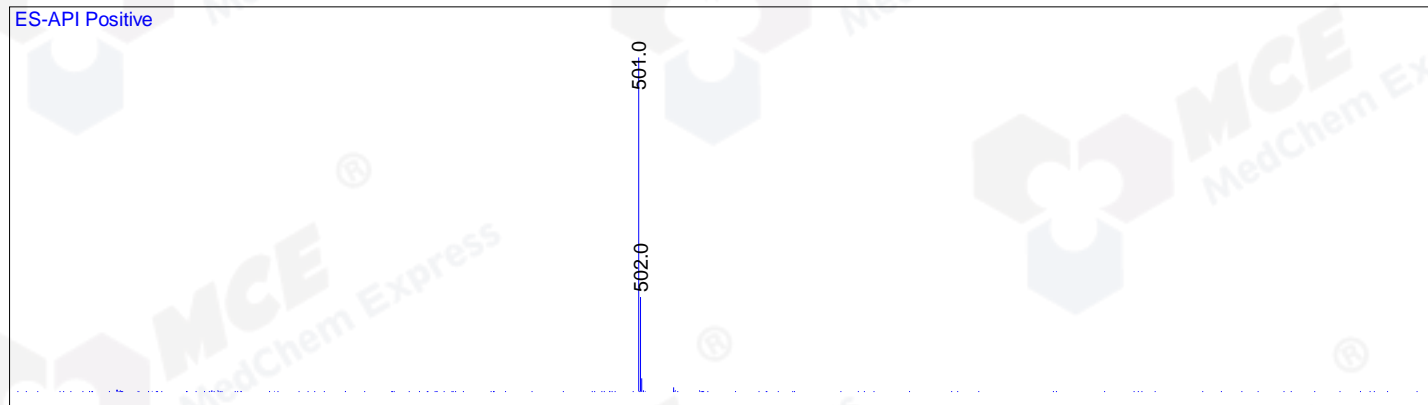
Integration Results for MSD1 TIC, MS File

RetTim	Width	Area	Height	Area%	MS (+)
--------	-------	------	--------	-------	--------

1.51	0.03	682783.38	342512.78	98.12	501
2.88	0.05	13116.48	3876.68	1.88	235

Ret. Time: 1.51

<<<< POSITIVE SPECTRA >>>>



Ret. Time: 2.88

