

File ..018\20180820\20180820\CPK2018-817-09525-0.D Tgt Mass (CHM):

Injection Date : 20 Aug 18 12:14 pm +0800 Seq. Line : 43

Sample Name : CPK2018-817-09525 Location : P1-C-08

Acq. Operator : SYSTEM Inj : 1

Spec. Reported : MS Integration Inj Volume : 6 ul

Acq. Method : D:\LCMS03\Data\2018\20180820\20180820\1-POS-3MIN.M

Analysis Method : D:\LCMS03\Data\2018\20180820\20180820\1-POS-3MIN.M

Catalog No : HY-16079 Batch#09525

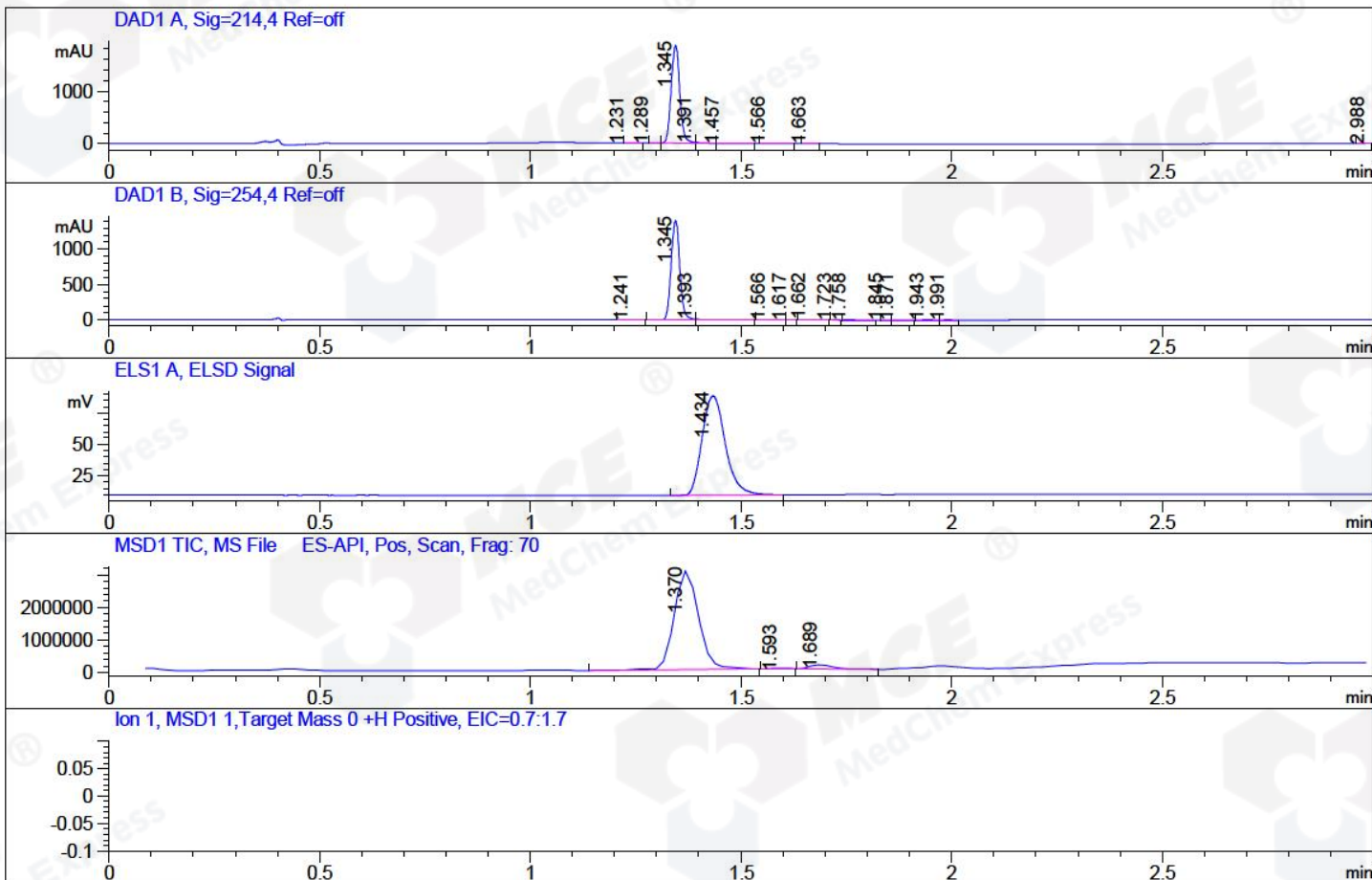
Method Info : Mobile Phase: A: water(0.01%TFA) B:ACN(0.01%TFA)

Gradient: 5% to 95%B within 1.3 min

Flow Rate :1.8ml/min

Column :SunFire C18, 4.6*50mm,3.5um A-RP-186

Oven Temperature : 45C



Integration Results for DAD1 A, Sig=214,4 Ref=off

RetTim	Width	Area	Height	Area%	MS (+)
1.23	0.03	1.69	0.76	0.06	536
1.29	0.02	0.43	0.38	0.02	261
1.34	0.02	2646.19	1858.92	98.77	261
1.39	0.02	14.83	12.84	0.55	261
1.46	0.02	2.84	1.74	0.11	520
1.57	0.02	4.28	2.86	0.16	233
1.66	0.02	8.79	6.14	0.33	425
2.99	0.01	0.07	0.07	0.00	105

Integration Results for DAD1 B, Sig=254,4 Ref=off

RetTim	Width	Area	Height	Area%	MS (+)
1.24	0.03	2.06	1.12	0.10	536
1.34	0.02	2010.30	1402.96	98.56	261
1.39	0.02	8.67	8.09	0.43	261
1.57	0.02	2.63	1.98	0.13	233
1.62	0.01	0.12	0.13	0.01	233
1.66	0.02	9.85	6.77	0.48	425

1.72	0.01	0.15	0.19	0.01	425
1.76	0.02	0.78	0.56	0.04	233
1.85	0.01	0.04	0.05	0.00	233
1.87	0.02	0.21	0.16	0.01	233
1.94	0.02	2.85	2.06	0.14	453
1.99	0.02	1.96	1.63	0.10	453

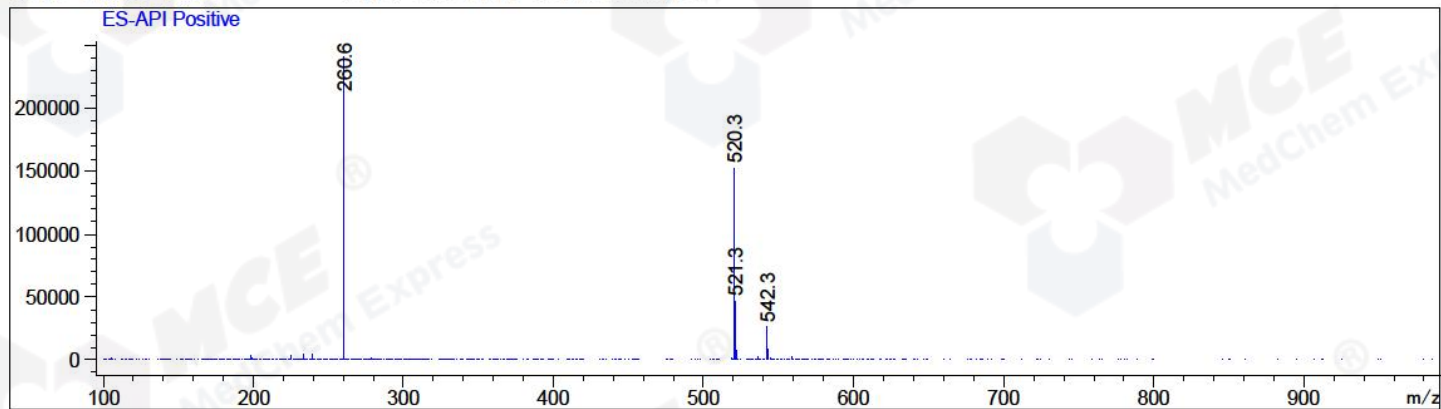
Integration Results for ELS1 A, ELSD Signal

RetTim	Width	Area	Height	Area%	MS (+)
1.43	0.06	301.67	78.80	100.00	261

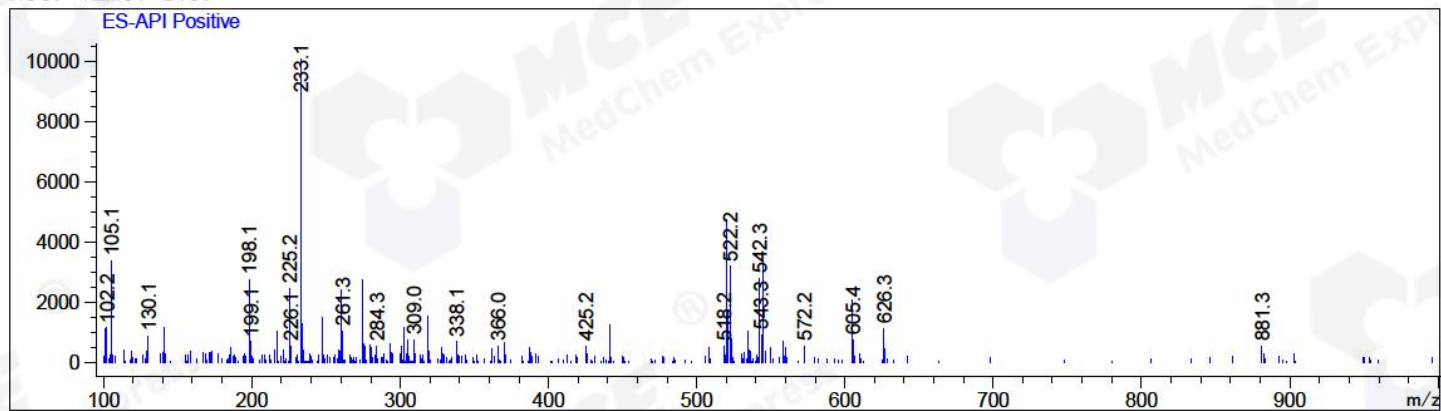
Integration Results for MSD1 TIC, MS File

RetTim	Width	Area	Height	Area%	MS (+)
1.37	0.06	12363834.00	3056794.25	95.99	261
1.59	0.04	54053.09	22339.11	0.42	233
1.69	0.06	462955.16	127289.35	3.59	425

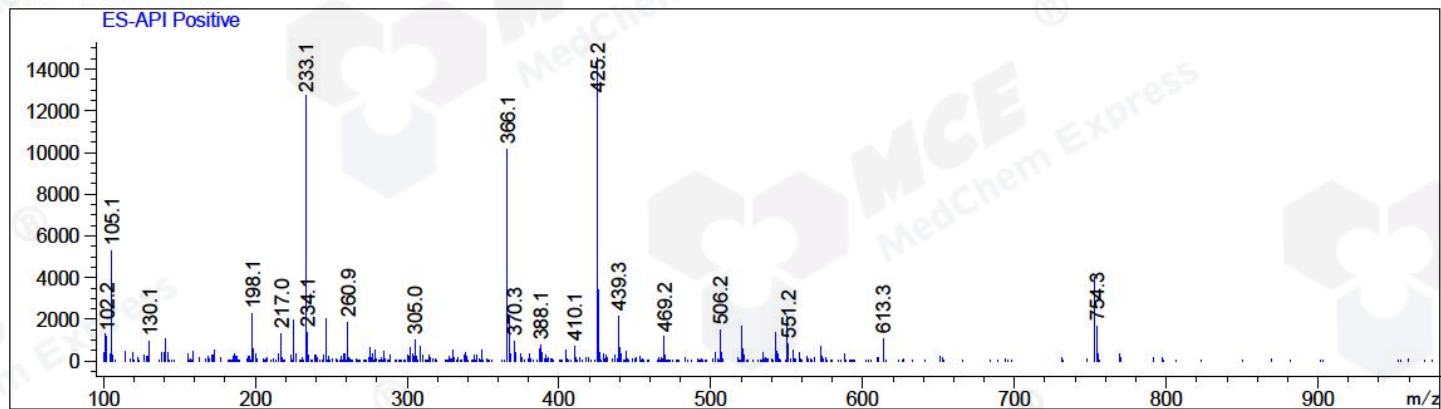
Ret. Time: 1.37 <<<< POSITIVE SPECTRA >>>>



Ret. Time: 1.59



Ret. Time: 1.69



*** End of Report ***