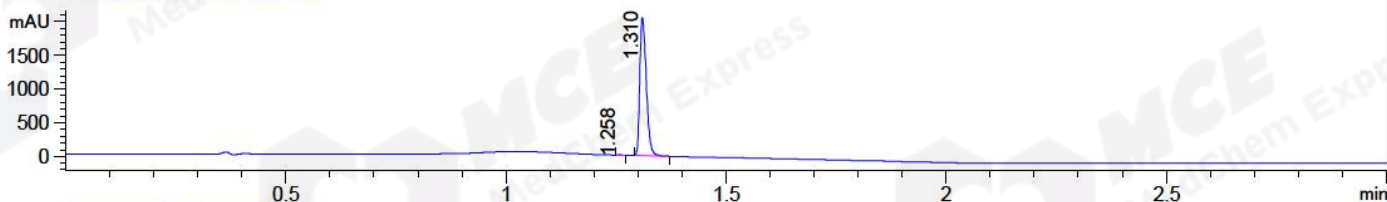


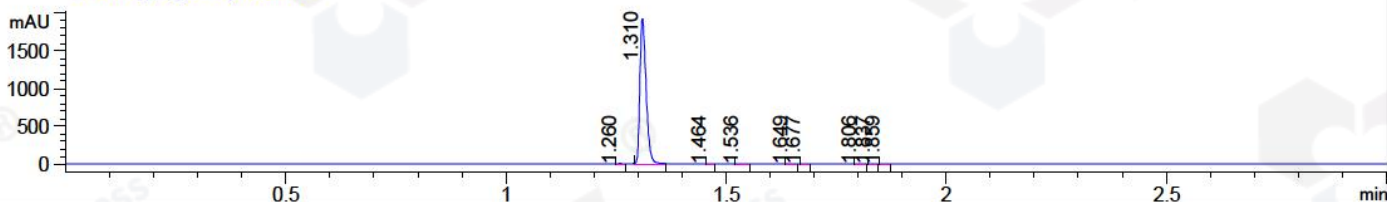
File ..\DATA\2018\20181107\481\BIZ2018-N06-WYQ15.D Tgt Mass (CHM):

Injection Date : 7 Nov 18 11:49 am +0800 Seq. Line : 27  
 Sample Name : BIZ2018-N06-WYQ15 Location : P2-D-08  
 Acq. Operator : LQ\_1052 Inj : 1  
 Spec. Reported : MS Integration Inj Volume : 1 ul  
 Acq. Method : D:\Chem32\1\data\2018\20181107\481\1-POS-3MIN-1.M  
 Analysis Method : D:\CHEM32\1\DATA\2018\20181107\481\1-POS-3MIN-1.M  
 Catalog No : HY-16562 Batch#34101 A-RP-314  
 Method Info : Mobile Phase: A: water(0.01%TFA) B:ACN(0.01%TFA)  
 Gradient: 5% to 95%B within 1.3 min  
 Flow Rate :1.8ml/min  
 Column :SunFire C18, 4.6\*50mm,3.5um A-RP-314  
 Oven Temperature : 45□

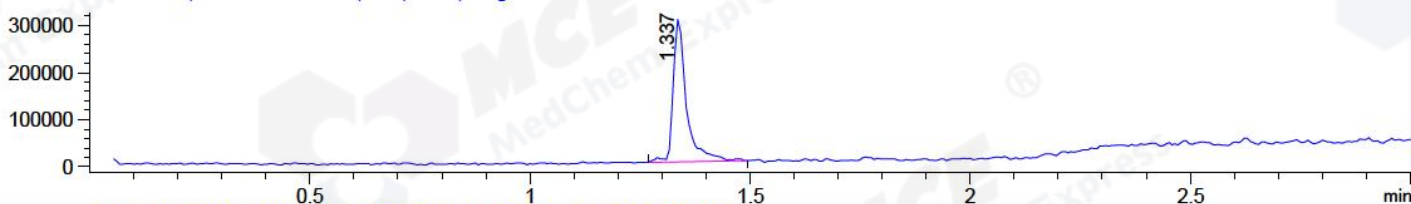
DAD1 B, Sig=214,4 Ref=off



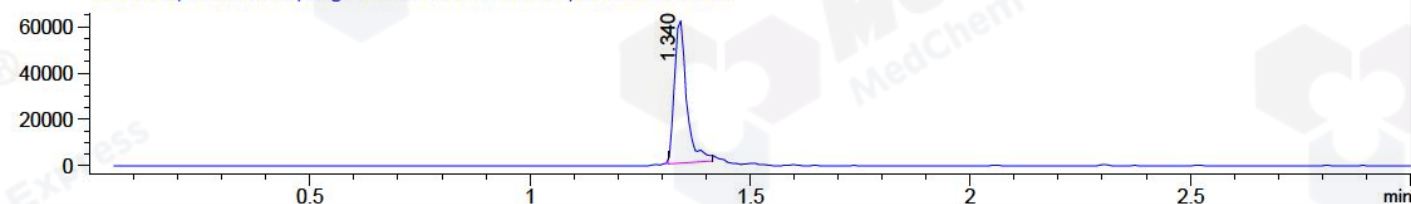
DAD1 C, Sig=254,4 Ref=off



MSD1 TIC, MS File ES-API, Pos, Scan, Frag: 70



Ion 587.2, MSD1 587.2, Target Mass 586.2 +H Positive, EIC=586.9:587.9



Integration Results for DAD1 B, Sig=214,4 Ref=off

RetTim	Width	Area	Height	Area%	MS (+)
1.26	0.01	3.43	4.27	0.16	141
1.31	0.02	2100.20	2047.08	99.84	294

Integration Results for DAD1 C, Sig=254,4 Ref=off

RetTim	Width	Area	Height	Area%	MS (+)
1.26	0.01	2.38	3.24	0.13	141
1.31	0.01	1876.83	1928.60	99.71	294
1.46	0.01	0.29	0.45	0.02	587
1.54	0.02	0.71	0.63	0.04	ND
1.65	0.02	0.67	0.69	0.04	141
1.68	0.01	0.28	0.36	0.01	141
1.81	0.01	0.42	0.49	0.02	141
1.84	0.01	0.38	0.47	0.02	141
1.86	0.01	0.38	0.51	0.02	141

Integration Results for MSD1 TIC, MS File

1.34 0.03 630882.81 304098.09 100.00 294

RetTim	Width	Area	Height	Area%	MS (+)
--------	-------	------	--------	-------	--------

Ret. Time: 1.34

<<<< POSITIVE SPECTRA >>>>

ES-API Positive

