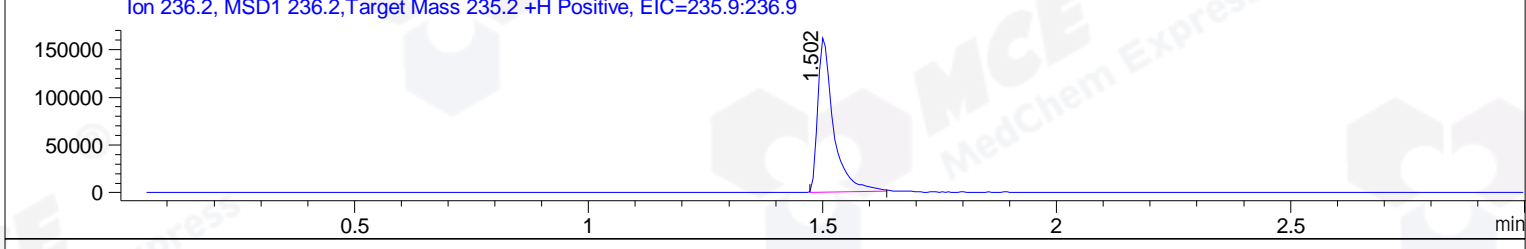
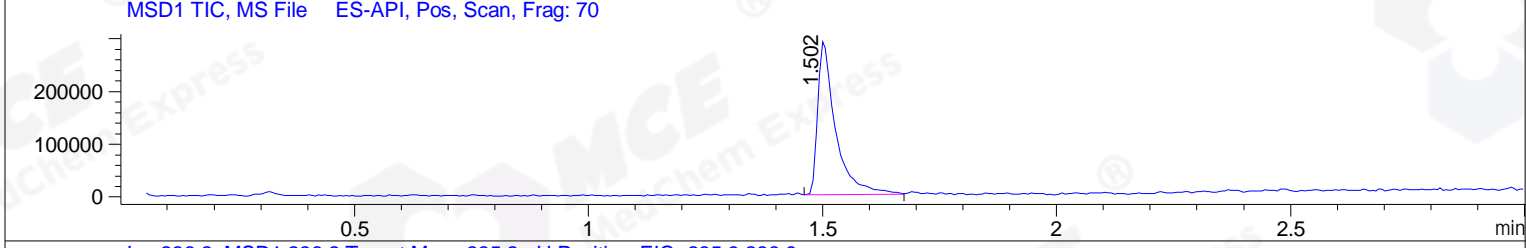
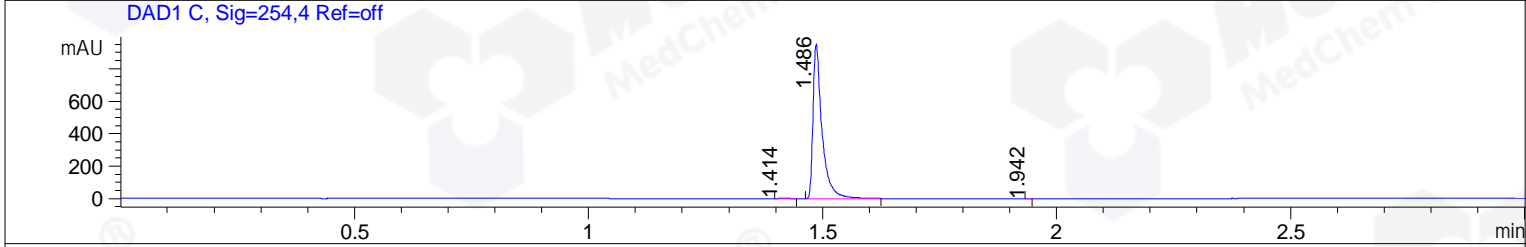
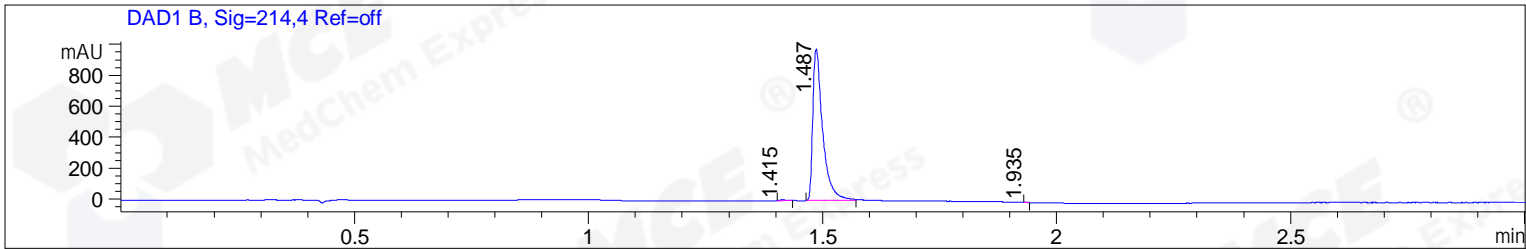


File ..\DATA\2019\20190302\555\CPK2019-221-18540.D Tgt Mass (CHM):
 Injection Date : 2 Mar 19 5:00 pm +0800 Seq. Line : 9
 Sample Name : CPK2019-221-18540 Location : PL-C-01
 Acq. Operator : LQ_1052 Inj : 1
 Spec. Reported : MS Integration Inj Volume : 1 ul
 Acq. Method : D:\Chem32\1\data\2019\20190302\555\1-POS-3MIN-1.M
 Analysis Method : D:\CHEM32\1\DATA\2019\20190302\555\1-POS-3MIN-1.M
 Catalog No : HY-16692 Batch#18540-20190221
 Method Info : Mobile Phase: A: water(0.01%TFA) B:ACN(0.01%TFA)
 Gradient: 5% to 95%B within 1.3 min
 Flow Rate :1.8ml/min
 Column :SunFire C18, 4.6*50mm,3.5um A-RP-314
 Oven Temperature : 45



Integration Results for DAD1 B, Sig=214,4 Ref=off

RetTim	Width	Area	Height	Area%	MS (+)
1.41	0.02	4.76	4.93	0.33	ND
1.49	0.02	1432.20	979.56	99.64	236
1.94	0.01	0.45	0.83	0.03	142

Integration Results for DAD1 C, Sig=254,4 Ref=off

RetTim	Width	Area	Height	Area%	MS (+)
1.41	0.02	5.07	4.16	0.40	ND
1.49	0.02	1273.35	953.42	99.59	236
1.94	0.01	0.23	0.33	0.02	142

Integration Results for MSD1 TIC, MS File

RetTim	Width	Area	Height	Area%	MS (+)
1.50	0.04	774892.94	294710.41	100.00	236

Ret. Time: 1.50

<<<< POSITIVE SPECTRA >>>>

ES-API Positive

