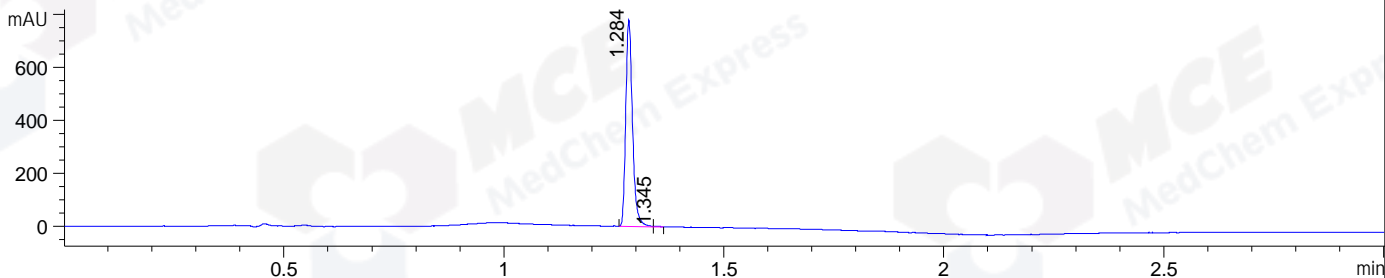
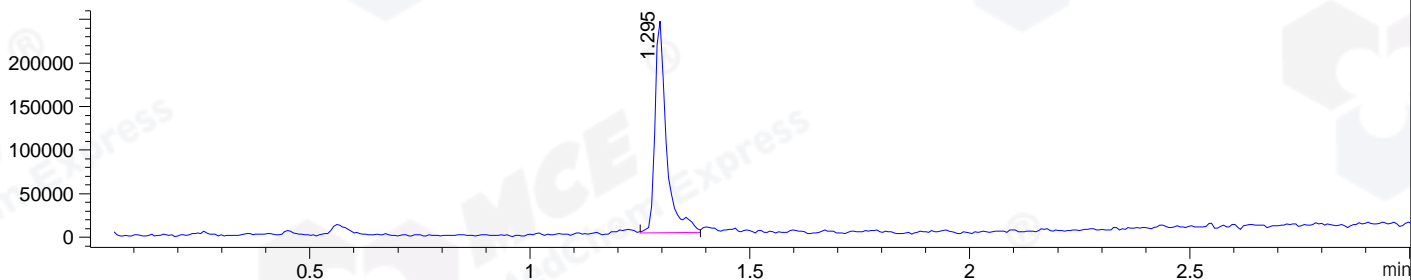


File ..\DATA\2020\20200319\880\BIZ2020-318-CXL2.D Tgt Mass (CHM):
Injection Date : 19 Mar 20 1:20 pm +0800 Seq. Line : 52
Sample Name : BIZ2020-318-CXL2 Location : P1-B-04
Acq. Operator : ZJ_1432 Inj : 1
Spec. Reported : MS Integration Inj Volume : 0.25 ul
Acq. Method : D:\Chem32\1\data\2020\20200319\880\1-POS-3MIN.M
Analysis Method : D:\CHEM32\1\DATA\2020\20200319\880\1-POS-3MIN.M
Catalog No : HY-16736A Batch# 61705
Method Info : Mobile Phase: A: water(0.01%TFA) B:ACN(0.01%TFA)
Gradient: 5% to 95%B within 1.3 min
Flow Rate :1.8ml/min
Column :SunFire C18, 4.6*50mm,3.5um A-RP-433
Oven Temperature : 45

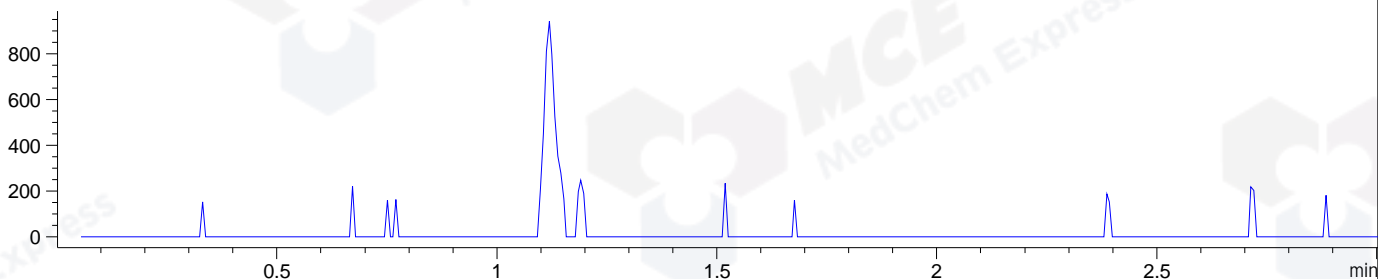
DAD1 B, Sig=214,4 Ref=off



MSD1 TIC, MS File ES-API, Pos, Scan, Frag: 70



Ion 246, MSD1 246, Target Mass 245 +H Positive, EIC=245.7:246.7



Integration Results for DAD1 B, Sig=214,4 Ref=off

| RetTim | Width | Area | Height | Area% | MS (+) |
|--------|-------|--------|--------|-------|--------|
| 1.28 | 0.02 | 832.99 | 781.30 | 99.61 | 210 |
| 1.34 | 0.02 | 3.25 | 3.40 | 0.39 | 210 |

Integration Results for MSD1 TIC, MS File

| RetTim | Width | Area | Height | Area% | MS (+) |
|--------|-------|-----------|-----------|--------|--------|
| 1.29 | 0.03 | 447019.69 | 244319.78 | 100.00 | 210 |

Ret. Time: 1.29

<<<< POSITIVE SPECTRA >>>>

ES-API Positive

