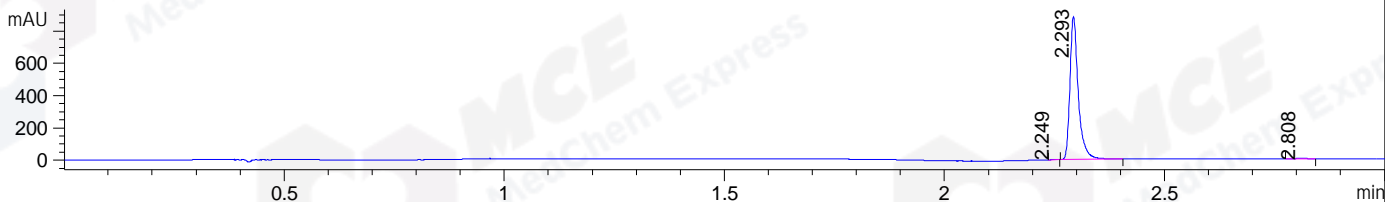
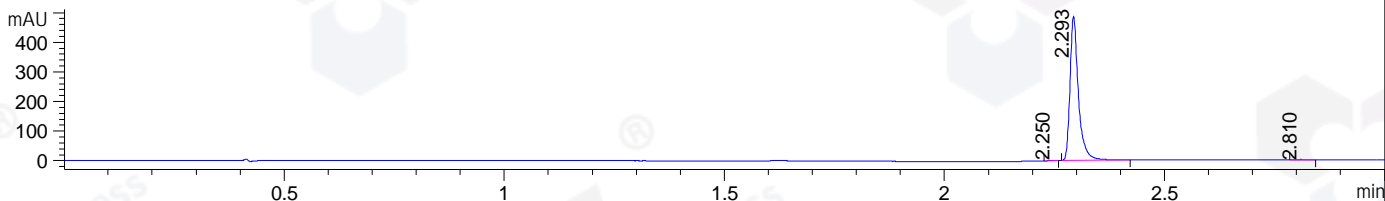


File ..1\DATA\2019\20190826\708\BIZ2019-826-WSD2.D Tgt Mass (CHM):  
 Injection Date : 26 Aug 19 7:52 pm +0800 Seq. Line : 66  
 Sample Name : BIZ2019-826-WSD2 Location : P1-B-03  
 Acq. Operator : ZJ\_1432 Inj : 1  
 Spec. Reported : MS Integration Inj Volume : 1 ul  
 Acq. Method : D:\Chem32\1\data\2019\20190826\708\1-POS-3MIN.M  
 Analysis Method : D:\CHEM32\1\DATA\2019\20190826\708\1-POS-3MIN.M  
 Catalog No : HY-16780 Batch#44804  
 Method Info : Mobile Phase: A: water(0.01%TFA) B:ACN(0.01%TFA)  
 Gradient: 5% to 95%B within 1.3 min  
 Flow Rate :1.8ml/min  
 Column :SunFire C18, 4.6\*50mm,3.5um A-RP-433  
 Oven Temperature : 45□

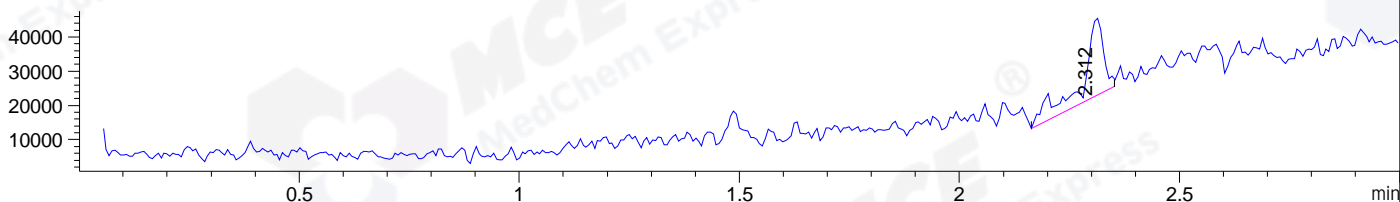
DAD1 B, Sig=214,4 Ref=off



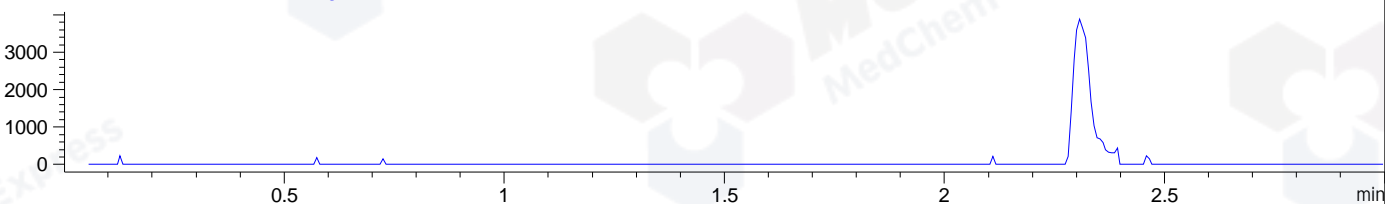
DAD1 C, Sig=254,4 Ref=off



MSD1 TIC, MS File ES-API, Pos, Scan, Frag: 70



Ion 602.68, MSD1 602.68, Target Mass 601.68 +H Positive, EIC=602.38:603.38



Integration Results for DAD1 B, Sig=214,4 Ref=off

| RetTim | Width | Area    | Height | Area% | MS (+) |
|--------|-------|---------|--------|-------|--------|
| 2.25   | 0.02  | 1.20    | 1.25   | 0.10  | 141    |
| 2.29   | 0.02  | 1173.98 | 887.82 | 99.58 | 141    |
| 2.81   | 0.03  | 3.76    | 2.14   | 0.32  | 141    |

Integration Results for DAD1 C, Sig=254,4 Ref=off

| RetTim | Width | Area   | Height | Area% | MS (+) |
|--------|-------|--------|--------|-------|--------|
| 2.25   | 0.02  | 0.57   | 0.52   | 0.09  | 141    |
| 2.29   | 0.02  | 647.63 | 487.72 | 99.68 | 141    |
| 2.81   | 0.03  | 1.47   | 0.84   | 0.23  | 141    |

Integration Results for MSD1 TIC, MS File

| RetTim | Width | Area     | Height   | Area%  | MS (+) |
|--------|-------|----------|----------|--------|--------|
| 2.31   | 0.05  | 76653.17 | 22788.36 | 100.00 | 141    |

Ret. Time: 2.31

<<<< POSITIVE SPECTRA >>>>

