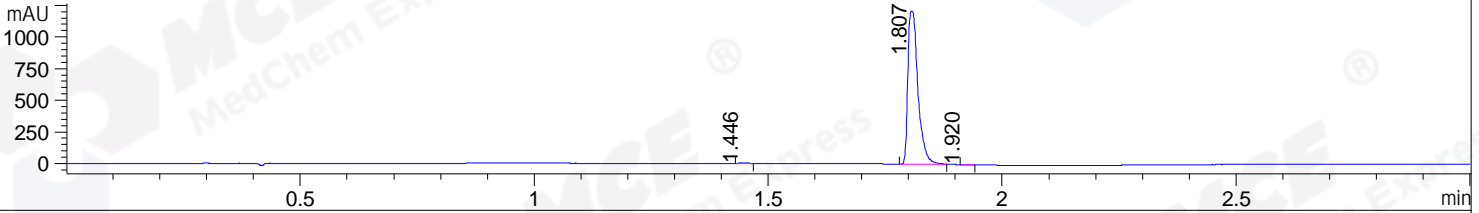
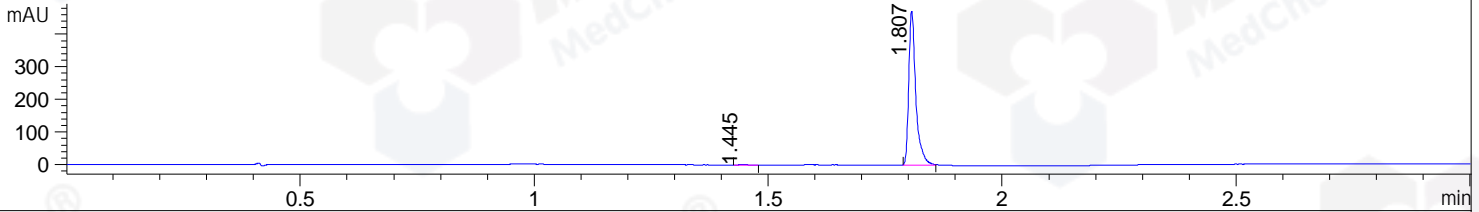


File ..1\DATA\2019\20190710\625\BIZ2019-709-CXL4.D Tgt Mass (CHM):
 Injection Date : 10 Jul 19 10:19 am +0800 Seq. Line : 17
 Sample Name : BIZ2019-709-CXL4 Location : PL-D-03
 Acq. Operator : ZJ_1432 Inj : 1
 Spec. Reported : MS Integration Inj Volume : 1 ul
 Acq. Method : D:\Chem32\1\data\2019\20190710\625\1-POS-3MIN.M
 Analysis Method : D:\CHEM32\1\DATA\2019\20190710\625\1-POS-3MIN.M
 Catalog No : HY-16926 Batch#43192
 Method Info : Mobile Phase: A: water(0.01%TFA) B:ACN(0.01%TFA)
 Gradient: 5% to 95%B within 1.3 min
 Flow Rate :1.8ml/min
 Column :SunFire C18, 4.6*50mm,3.5um A-RP-433
 Oven Temperature : 45

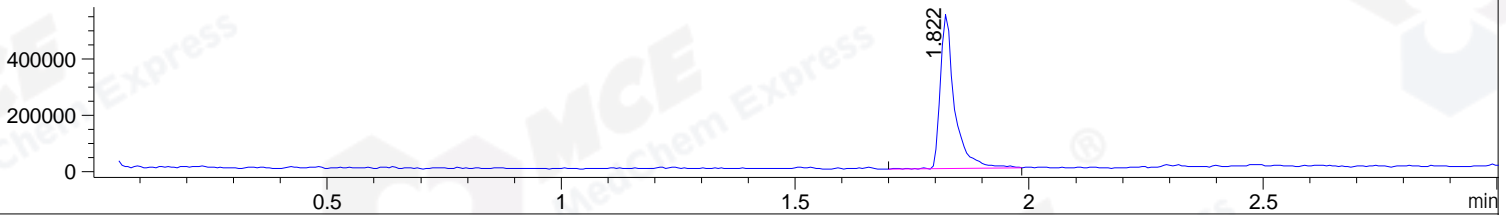
DAD1 B, Sig=214,4 Ref=off



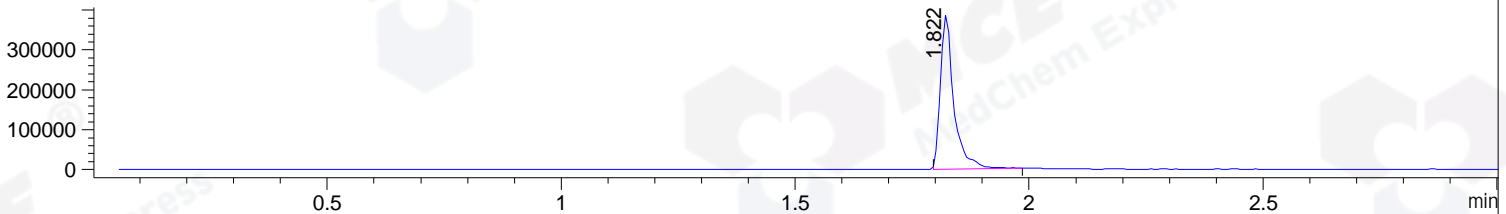
DAD1 C, Sig=254,4 Ref=off



MSD1 TIC, MS File ES-API, Pos, Scan, Frag: 70



Ion 297.13, MSD1 297.13, Target Mass 296.13 +H Positive, EIC=296.83:297.83



Integration Results for DAD1 B, Sig=214,4 Ref=off

RetTim	Width	Area	Height	Area%	MS (+)
1.45	0.01	6.16	6.13	0.34	157
1.81	0.02	1814.55	1210.58	99.63	297
1.92	0.01	0.61	0.70	0.03	297

Integration Results for DAD1 C, Sig=254,4 Ref=off

RetTim	Width	Area	Height	Area%	MS (+)
1.45	0.02	1.08	0.95	0.22	157
1.81	0.02	496.05	472.51	99.78	297

Integration Results for MSD1 TIC, MS File

RetTim	Width	Area	Height	Area%	MS (+)
1.82	0.03	1180609.38	551148.25	100.00	297

Ret. Time: 1.82

<<<< POSITIVE SPECTRA >>>>

ES-API Positive

