

File ..\2018\20180806\20180806\CPK2018-806-19517.D Tgt Mass (CHM):

Injection Date : 6 Aug 18 4:22 pm +0800 Seq. Line : 89

Sample Name : CPK2018-806-19517 Location : P2-A-07

Acq. Operator : SYSTEM Inj : 1

Spec. Reported : MS Integration Inj Volume : 1 ul

Acq. Method : D:\LCMS03\Data\2018\20180806\20180806\1-POS-3MIN.M

Analysis Method : D:\LCMS03\Data\2018\20180806\20180806\1-POS-3MIN.M

Catalog No : HY-17401 Batch#19517

Method Info : Mobile Phase: A: water(0.01%TFA) B:ACN(0.01%TFA)

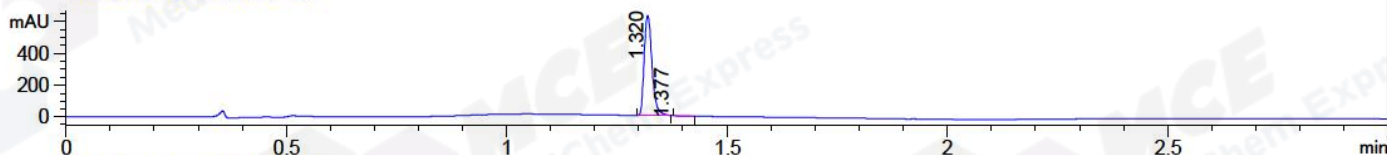
Gradient: 5% to 95%B within 1.3 min

Flow Rate :1.8ml/min

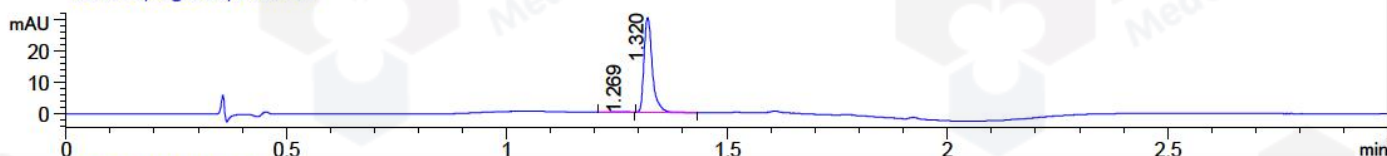
Column :SunFire C18, 4.6*50mm,3.5um A-RP-186

Oven Temperature : 45C

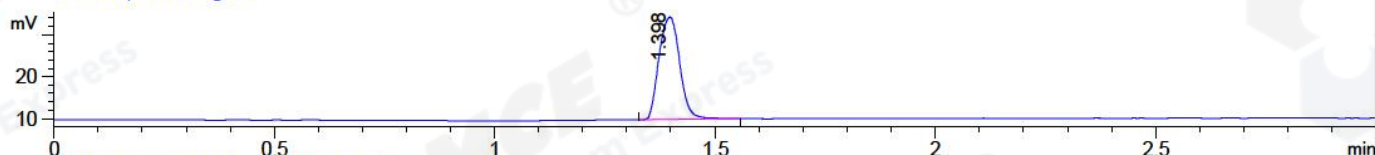
DAD1 A, Sig=214,4 Ref=off



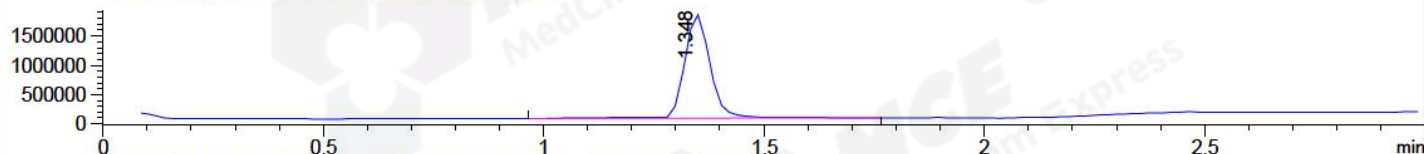
DAD1 B, Sig=254,4 Ref=off



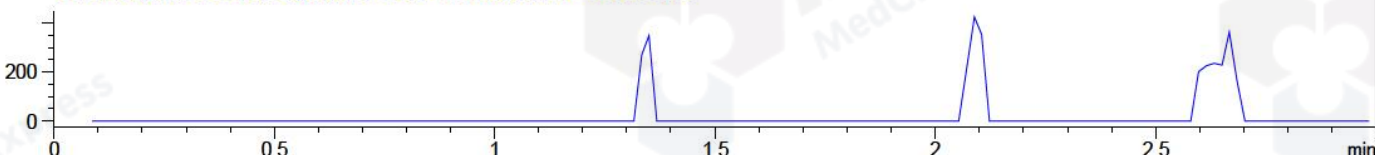
ELS1 A, ELSD Signal



MSD1 TIC, MS File ES-API, Pos, Scan, Frag: 70



Ion 501.5, MSD1 501.5, Target Mass 500.5 +H Positive, EIC=501.2:502.2



Integration Results for DAD1 A, Sig=214,4 Ref=off

RetTim	Width	Area	Height	Area%	MS (+)
1.32	0.03	778.22	460.14	99.92	428
1.38	0.03	0.59	0.39	0.08	428

Integration Results for DAD1 B, Sig=254,4 Ref=off

RetTim	Width	Area	Height	Area%	MS (+)
1.27	0.04	0.39	0.12	0.97	315
1.32	0.02	39.65	30.08	99.03	428

Integration Results for ELS1 A, ELSD Signal

RetTim	Width	Area	Height	Area%	MS (+)
1.40	0.05	80.38	24.47	100.00	428

Integration Results for MSD1 TIC, MS File

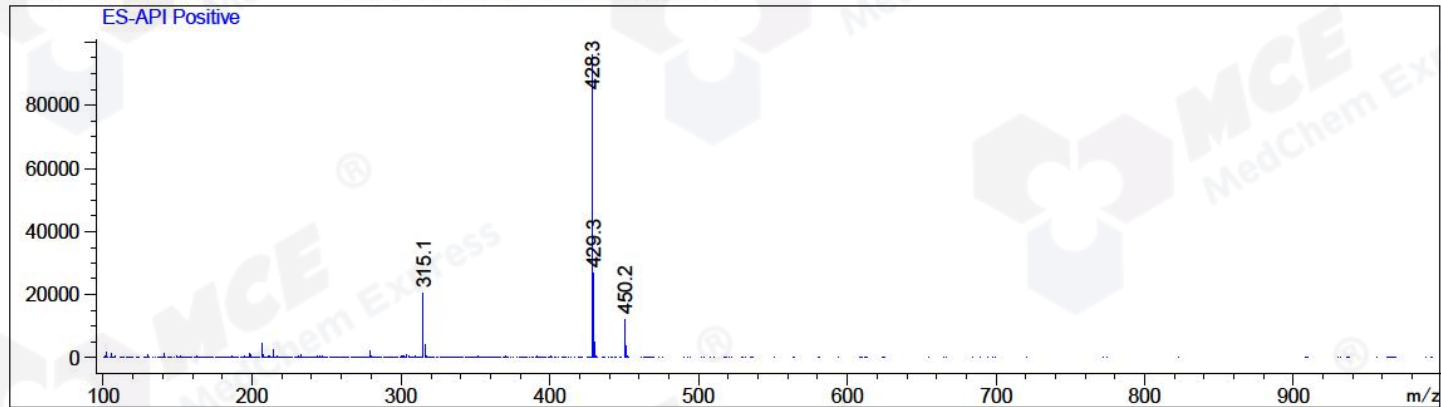
1.35 0.06 7387440.50 1776491.38 100.00 428

RetTim	Width	Area	Height	Area%	MS (+)
--------	-------	------	--------	-------	--------

-----|-----|-----|-----|-----|-----|

Ret. Time: 1.35

<<<< POSITIVE SPECTRA >>>>



*** End of Report ***