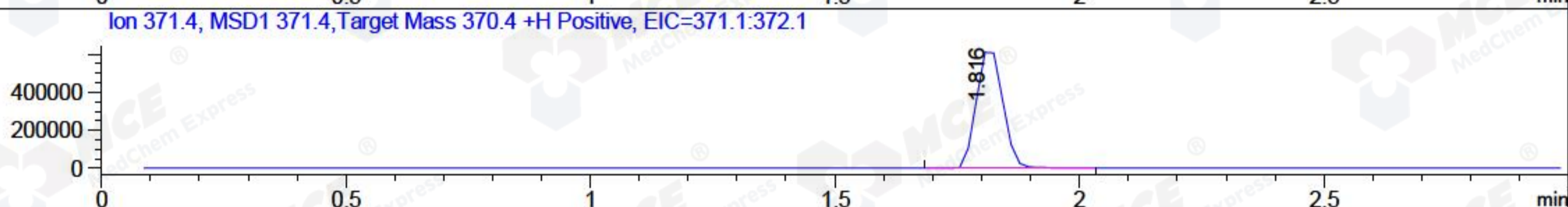
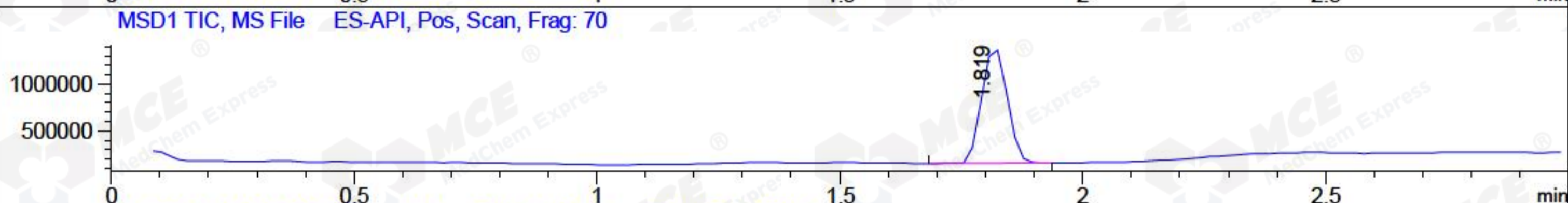
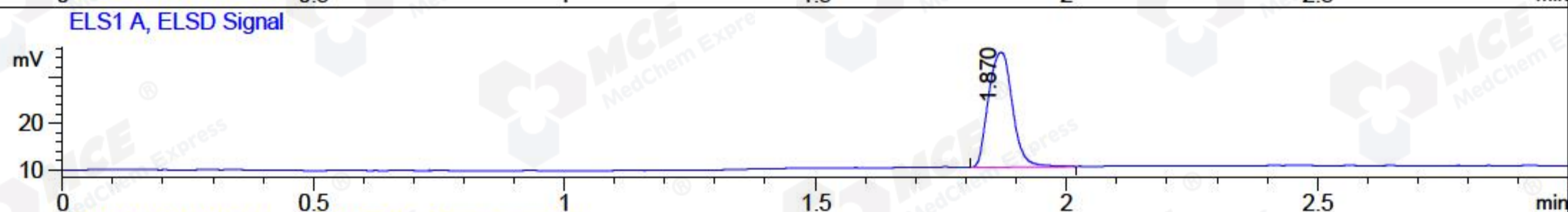
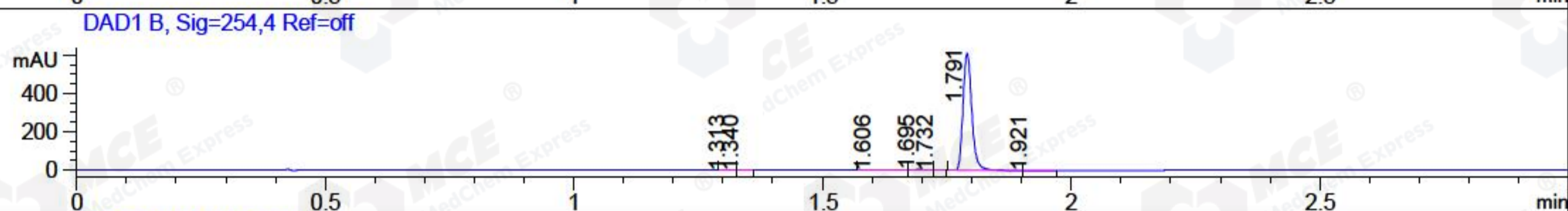
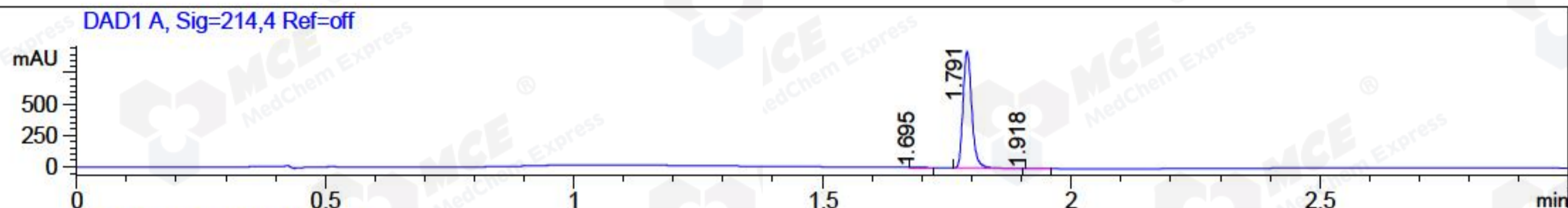


File ..\2018\20180730\20180730\CPK2018-730-10586.D Tgt Mass (CHM):
Injection Date : 30 Jul 18 1:40 pm +0800 Seq. Line : 60
Sample Name : CPK2018-730-10586 Location : P1-E-03
Acq. Operator : SYSTEM Inj : 1
Spec. Reported : MS Integration Inj Volume : 1 ul
Acq. Method : D:\LCMS03\Data\2018\20180730\20180730\1-POS-3MIN.M
Analysis Method : D:\LCMS03\Data\2018\20180730\20180730\1-POS-3MIN.M
Catalog No : HY-17474 Batch#10586
Method Info : Mobile Phase: A: water(0.01%TFA) B:ACN(0.01%TFA)
Gradient: 5% to 95%B within 1.3 min
Flow Rate :1.8ml/min
Column :SunFire C18, 4.6*50mm,3.5um A-RP-186
Oven Temperature : 45C



Integration Results for DAD1 A, Sig=214,4 Ref=off

RetTim	Width	Area	Height	Area%	MS (+)
1.69	0.02	6.94	5.93	0.61	102
1.79	0.02	1130.22	925.91	99.32	371
1.92	0.03	0.82	0.46	0.07	102

Integration Results for DAD1 B, Sig=254,4 Ref=off

RetTim	Width	Area	Height	Area%	MS (+)
1.31	0.02	1.27	1.04	0.17	102
1.34	0.02	0.78	0.84	0.10	102
1.61	0.03	2.04	1.12	0.27	102
1.70	0.02	4.36	3.78	0.58	102
1.73	0.01	0.09	0.11	0.01	102
1.79	0.02	744.74	609.02	98.73	371
1.92	0.02	1.08	0.77	0.14	102

Integration Results for ELS1 A, ELSD Signal

RetTim	Width	Area	Height	Area%	MS (+)
--------	-------	------	--------	-------	--------

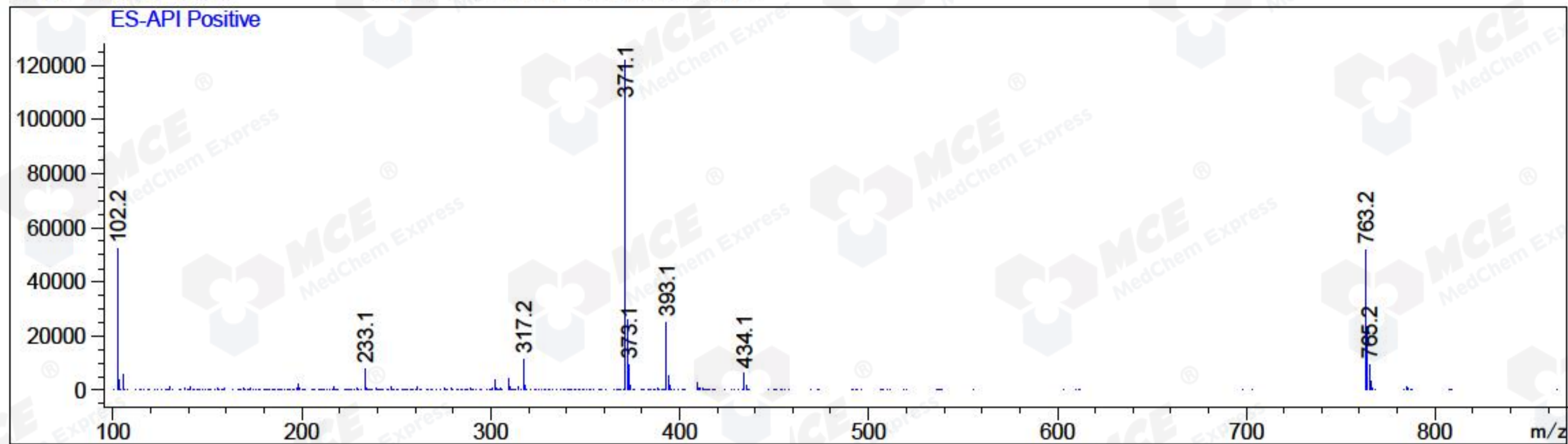
1.87 0.05 82.29 24.75 100.00 371

Integration Results for MSD1 TIC, MS File

RetTim	Width	Area	Height	Area%	MS (+)
1.82	0.06	4499631.50	1244460.13	100.00	371

Ret. Time: 1.82

<<<< POSITIVE SPECTRA >>>>



*** End of Report ***