

File ..2018\20180130\20180130-2\BIZ2018-130-WYQ9.D Tgt Mass (CHM):

Injection Date : 30 Jan 18 5:08 pm +0800 Seq. Line : 25

Sample Name : BIZ2018-130-WYQ9 Location : P2-A-05

Acq. Operator : SYSTEM Inj : 1

Spec. Reported : MS Integration Inj Volume : 1 ul

Acq. Method : D:\LCMS03\Data\2018\20180130\20180130-2\1-POS-3MIN.M

Analysis Method : D:\LCMS03\Data\2018\20180130\20180130-2\1-POS-3MIN.M

Catalog No : HY-17479A Batch#28487

Method Info : Mobile Phase: A: water(0.01%TFA) B:ACN(0.01%TFA)

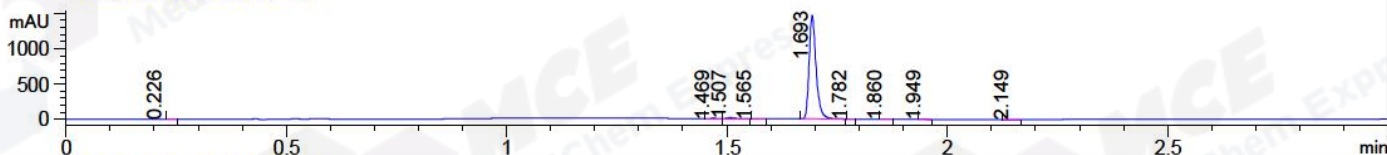
Gradient: 5% to 95%B within 1.3 min

Flow Rate :1.8ml/min

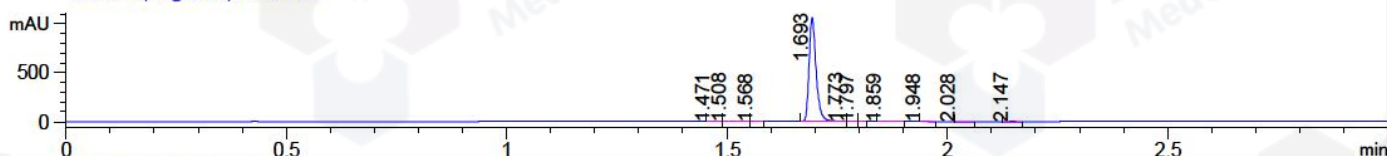
Column :SunFire C18, 4.6*50mm,3.5um A-RP-186

Oven Temperature : 45C

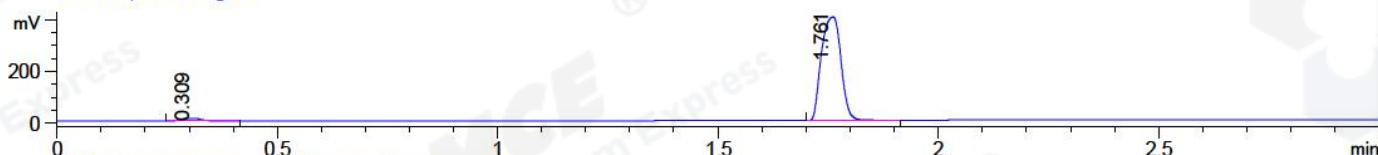
DAD1 A, Sig=214,4 Ref=off



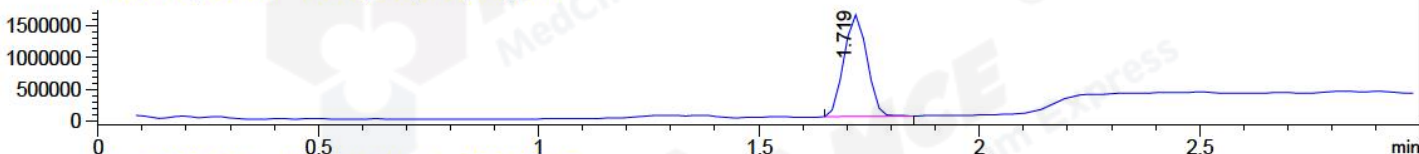
DAD1 B, Sig=254,4 Ref=off



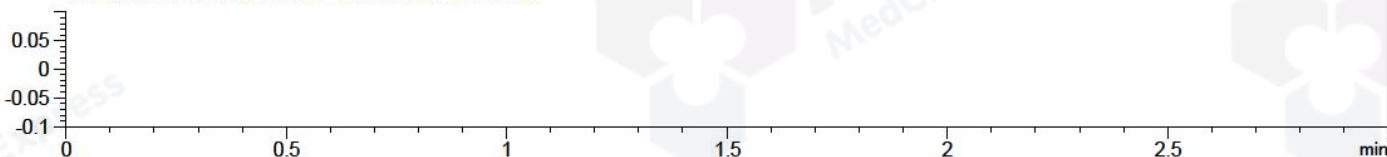
ELS1 A, ELSD Signal



MSD1 TIC, MS File ES-API, Pos, Scan, Frag: 70



Ion 1, MSD1 1, Target Mass 0 +H Positive, EIC=0.7:1.7



Integration Results for DAD1 A, Sig=214,4 Ref=off

RetTim	Width	Area	Height	Area%	MS (+)
0.23	0.01	1.21	0.06	0.07	443
1.47	0.02	3.37	3.28	0.21	174
1.51	0.02	13.93	13.52	0.85	258
1.57	0.02	0.51	0.51	0.03	105
1.69	0.02	1610.41	1467.33	98.65	256
1.78	0.02	0.41	0.42	0.03	256
1.86	0.02	0.58	0.47	0.04	105
1.95	0.02	0.98	0.74	0.06	105
2.15	0.02	1.08	0.97	0.07	105

Integration Results for DAD1 B, Sig=254,4 Ref=off

RetTim	Width	Area	Height	Area%	MS (+)
1.47	0.02	0.26	0.25	0.02	174
1.51	0.02	1.31	1.18	0.11	258
1.57	0.02	0.12	0.13	0.01	105
1.69	0.02	1170.86	1062.41	99.51	256
1.77	0.01	0.86	0.96	0.07	256

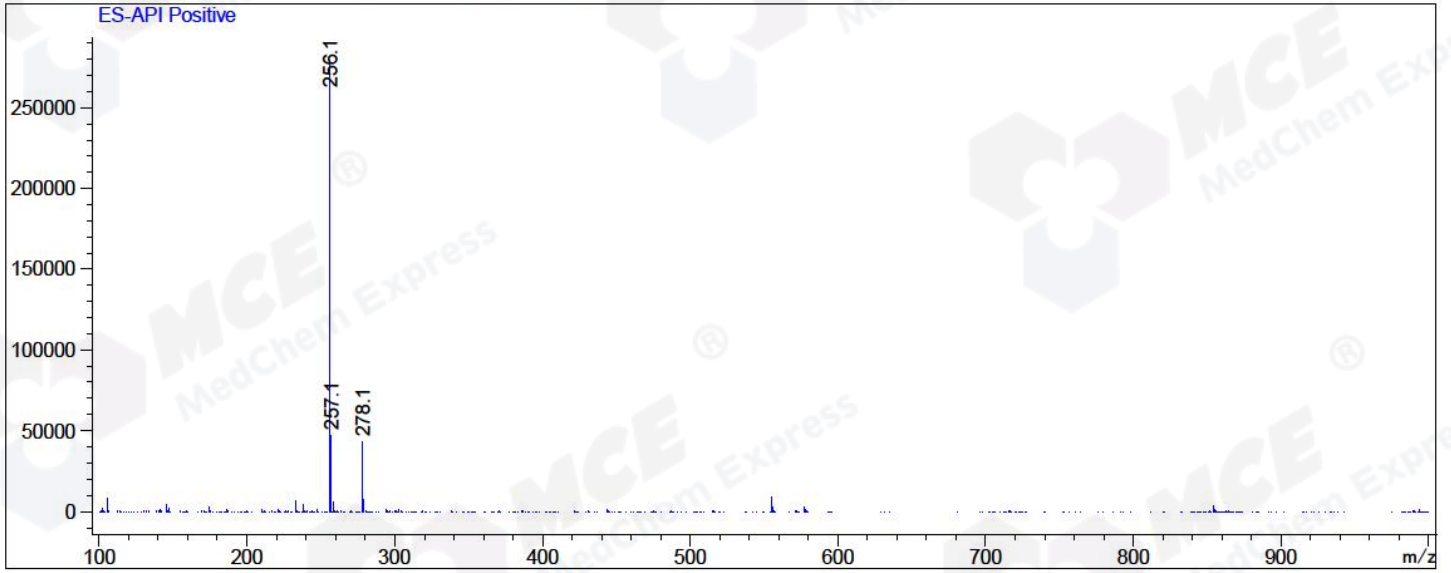
1.80	0.01	0.14	0.26	0.01	105
1.86	0.02	0.65	0.41	0.06	105
1.95	0.02	0.46	0.39	0.04	105
2.03	0.02	0.31	0.31	0.03	105
2.15	0.02	1.60	1.38	0.14	105

Integration Results for MSD1 TIC, MS File

RetTim	Width	Area	Height	Area%	MS(+)
1.72	0.06	5771728.00	1602706.50	100.00	256

Ret. Time: 1.72

<<<< POSITIVE SPECTRA >>>>



*** End of Report ***