

File ..\Data\20171018\20171018\CPK2017-018-15006.D Tgt Mass (CHM):

Injection Date : 18 Oct 17 7:18 pm +0800 Seq. Line : 130

Sample Name : CPK2017-018-15006 Location : P2-B-01

Acq. Operator : SYSTEM Inj : 1

Spec. Reported : MS Integration Inj Volume : 1 ul

Acq. Method : D:\LCMS03\Data\20171018\20171018\1-POS-3MIN.M

Analysis Method : D:\LCMS03\Data\20171018\20171018\1-POS-3MIN.M

Catalog No : HY-17589 Batch#15006

Method Info : Mobile Phase: A: water(0.01%TFA) B:ACN(0.01%TFA)

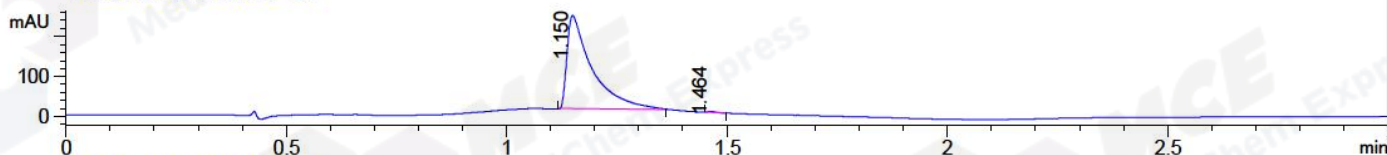
Gradient: 5% to 95%B within 1.3 min

Flow Rate :1.8ml/min

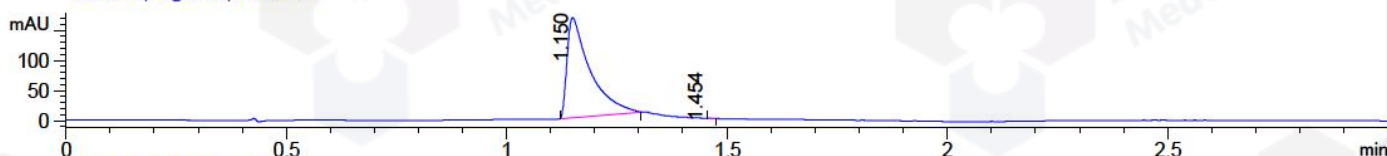
Column :SunFire C18, 4.6*50mm,3.5um A-RP-186

Oven Temperature : 45C

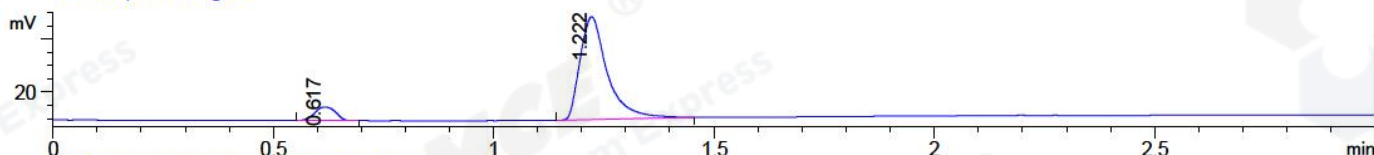
DAD1 A, Sig=214,4 Ref=off



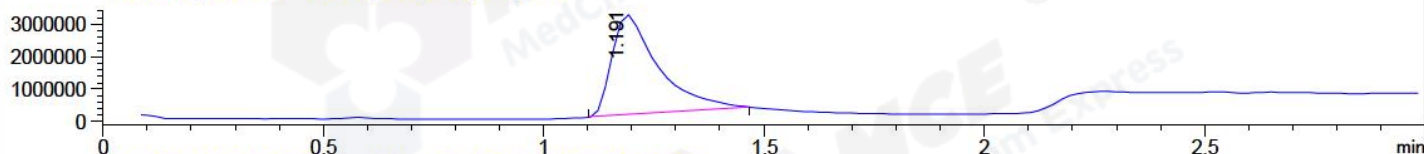
DAD1 B, Sig=254,4 Ref=off



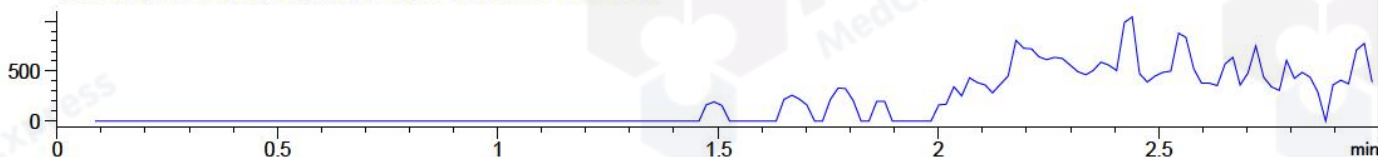
ELS1 A, ELSD Signal



MSD1 TIC, MS File ES-API, Pos, Scan, Frag: 70



Ion 515.9, MSD1 515.9, Target Mass 515.9 Positive, EIC=515.6:516.6



Integration Results for DAD1 A, Sig=214,4 Ref=off

RetTim	Width	Area	Height	Area%	MS (+)
1.15	0.07	925.25	233.59	99.66	320
1.46	0.01	3.13	3.45	0.34	320

Integration Results for DAD1 B, Sig=254,4 Ref=off

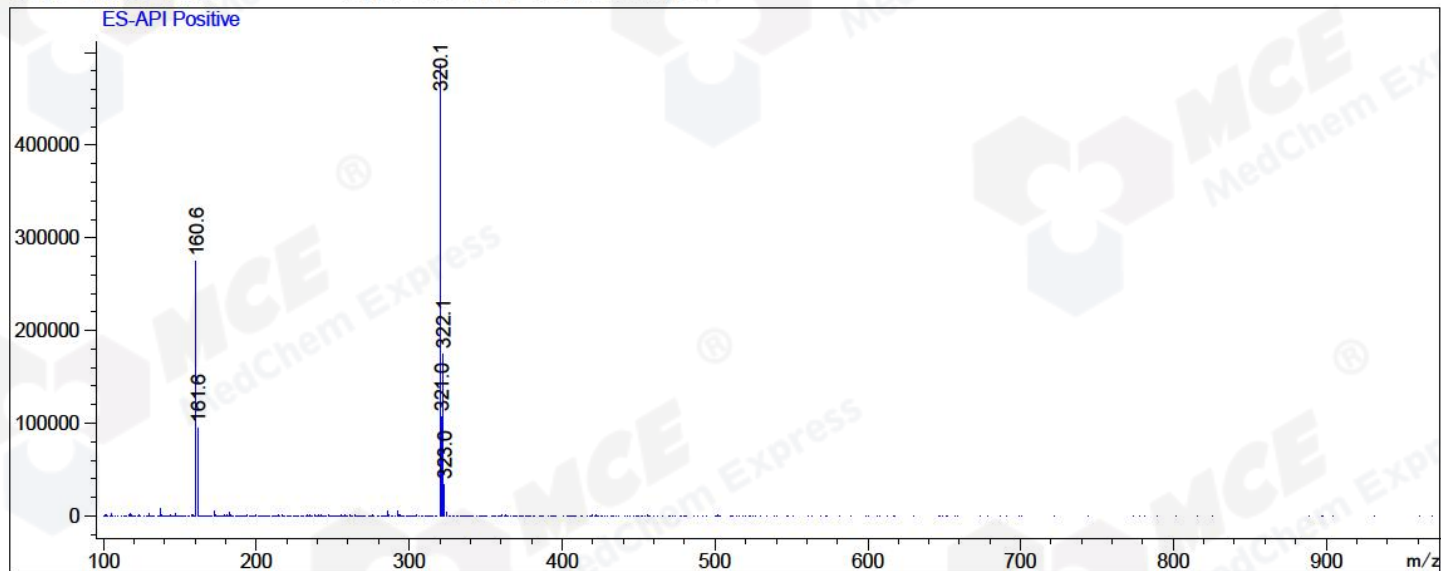
RetTim	Width	Area	Height	Area%	MS (+)
1.15	0.06	611.40	167.04	99.89	320
1.45	0.02	0.66	0.17	0.11	320

Integration Results for MSD1 TIC, MS File

RetTim	Width	Area	Height	Area%	MS (+)
1.19	0.12	22439810.00	3108255.75	100.00	320

Ret. Time: 1.19

<<<< POSITIVE SPECTRA >>>>



*** End of Report ***