

File ..\2019\20190704\20190704\CPK2019-704-12717.D Tgt Mass (CHM):

Injection Date : 4 Jul 19 8:14 pm +0800 Seq. Line : 135

Sample Name : CPK2019-704-12717 Location : PI-B-02

Acq. Operator : SYSTEM Inj : 1

Spec. Reported : MS Integration Inj Volume : 1 ul

Acq. Method : D:\LCMS03\Data\20190704\20190704\1-POS-3MIN.M

Analysis Method : D:\CHEM32\1\DATA\2019\20190704\20190704\1-POS-3MIN.M

Catalog No : HY-18360 Batch#12717

Method Info : Mobile Phase: A: water(0.01%TFA) B:ACN(0.01%TFA)

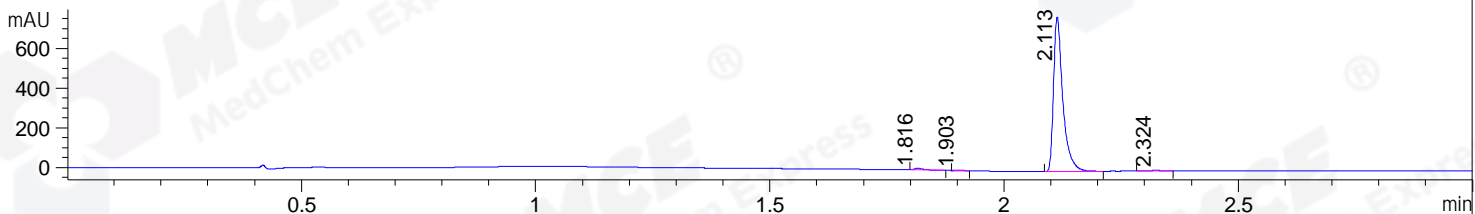
Gradient: 5% to 95%B within 1.3 min

Flow Rate :1.8ml/min

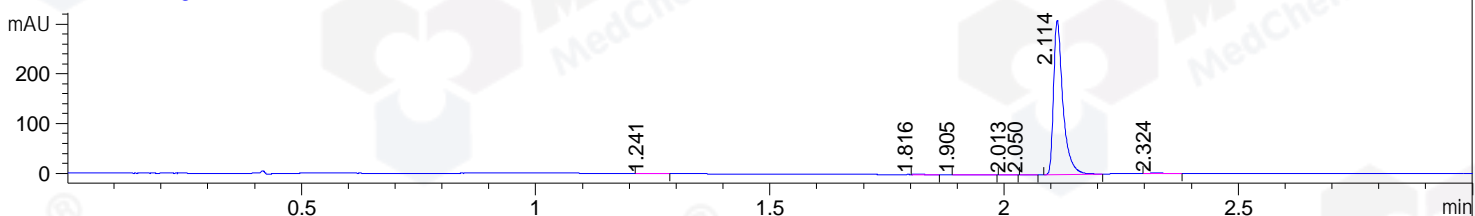
Column :SunFire C18, 4.6*50mm,3.5um A-RP-446

Oven Temperature : 45C

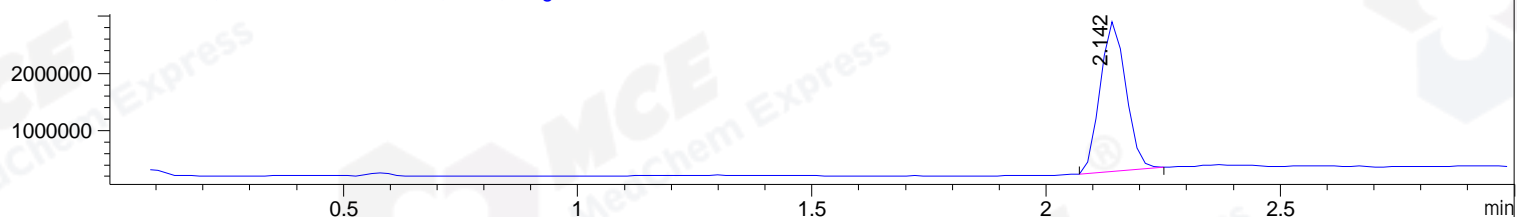
DAD1 A, Sig=214,4 Ref=off



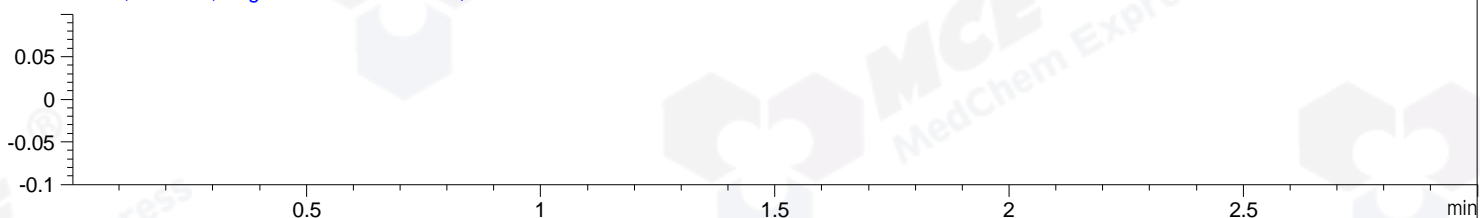
DAD1 B, Sig=254,4 Ref=off



MSD1 TIC, MS File ES-API, Pos, Scan, Frag: 70



Ion 1, MSD1 1, Target Mass 0 +H Positive, EIC=0.7:1.7



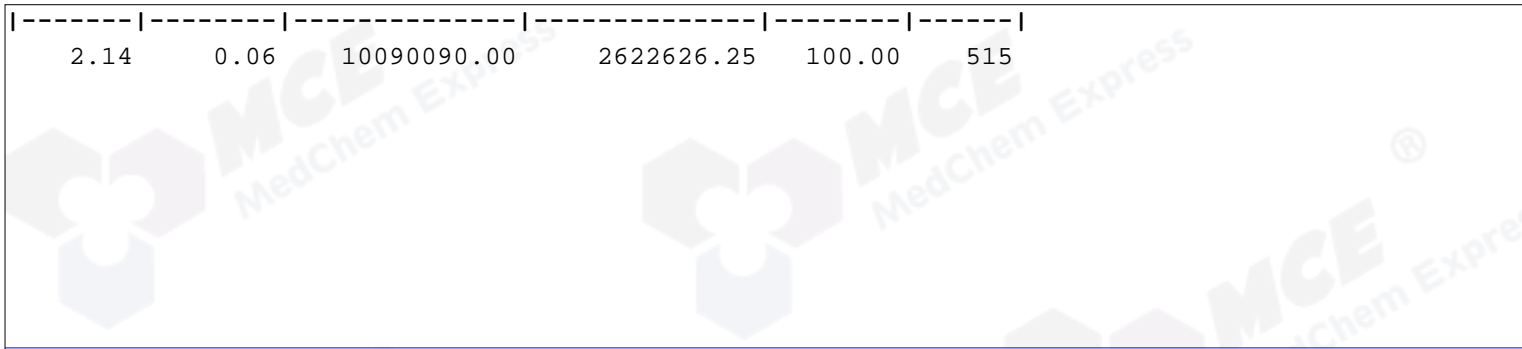
Integration Results for DAD1 A, Sig=214,4 Ref=off

RetTim	Width	Area	Height	Area%	MS (+)
1.82	0.02	10.06	8.44	0.92	114
1.90	0.02	3.19	2.67	0.29	114
2.11	0.02	1076.88	779.20	98.41	515
2.32	0.02	4.17	2.65	0.38	114

Integration Results for DAD1 B, Sig=254,4 Ref=off

RetTim	Width	Area	Height	Area%	MS (+)
1.24	0.02	0.57	0.35	0.13	145
1.82	0.02	1.18	1.01	0.27	114
1.90	0.03	0.73	0.33	0.17	114
2.01	0.02	0.17	0.16	0.04	114
2.05	0.02	0.24	0.21	0.06	114
2.11	0.02	431.08	310.32	98.74	515
2.32	0.03	2.62	1.65	0.60	114

Integration Results for MSD1 TIC, MS File



RetTim	Width	Area	Height	Area%	MS (+)
--------	-------	------	--------	-------	--------

Ret. Time: 2.14

<<<< POSITIVE SPECTRA >>>>

ES-API Positive

