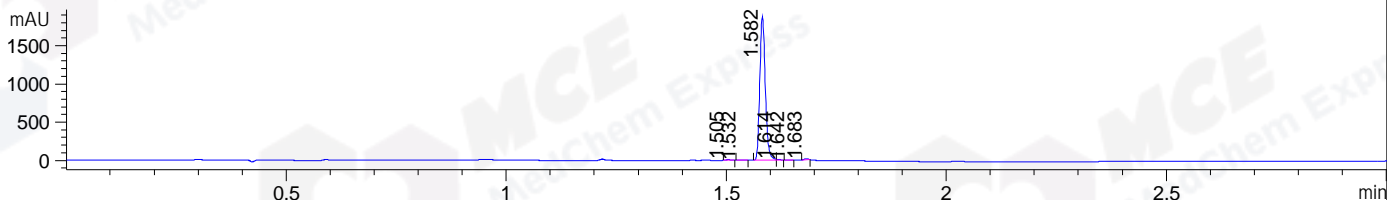
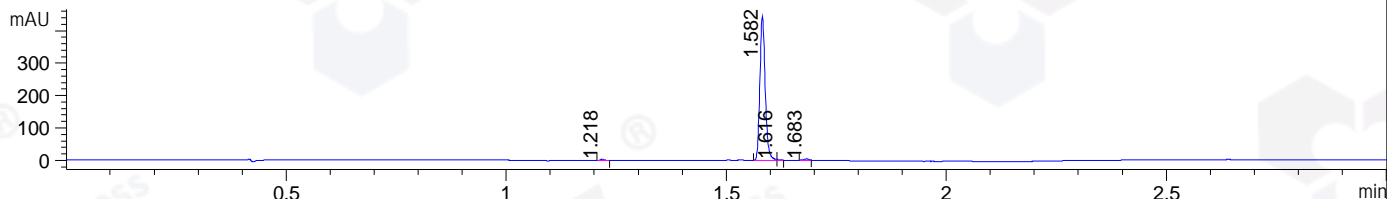


File ..DATA\2021\20210319\1309\CPK2021-318-18808.D Tgt Mass (CHM):
Injection Date : 19 Mar 21 10:30 am +0800 Seq. Line : 19
Sample Name : CPK2021-318-18808 Location : P1-B-04
Acq. Operator : yrz_1364 Inj : 1
Spec. Reported : MS Integration Inj Volume : 1 ul
Acq. Method : D:\Chem32\1\data\2021\20210319\1309\1-POS-3MIN.M
Analysis Method : D:\CHEM32\1\DATA\2021\20210319\1309\1-POS-3MIN.M
CAS NO. : 946128-88-7
Method Info : Mobile Phase: A: water(0.01%TFA) B:ACN(0.01%TFA)
Gradient: 5% to 95%B within 1.3 min
Flow Rate :1.8ml/min
Column :SunFire C18, 4.6*50mm,3.5um A-RP-698

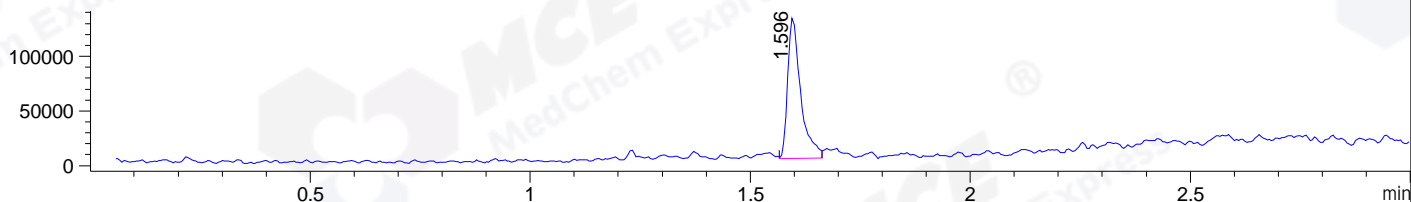
DAD1 B, Sig=214,4 Ref=off



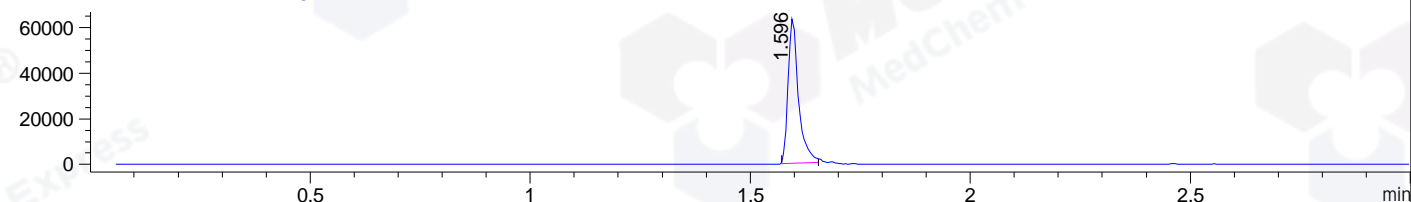
DAD1 C, Sig=254,4 Ref=off



MSD1 TIC, MS File ES-API, Pos, Scan, Frag: 70



Ion 472, MSD1 472, Target Mass 471 +H Positive, EIC=471.7:472.7



Integration Results for DAD1 B, Sig=214,4 Ref=off

RetTim	Width	Area	Height	Area%	MS (+)
1.50	0.01	6.13	8.68	0.37	ND
1.53	0.01	5.54	6.59	0.33	ND
1.58	0.01	1642.23	1883.88	98.27	472
1.61	0.01	5.94	11.87	0.36	472
1.64	0.01	2.25	2.68	0.13	472
1.68	0.01	9.13	15.22	0.55	472

Integration Results for DAD1 C, Sig=254,4 Ref=off

RetTim	Width	Area	Height	Area%	MS (+)
1.22	0.01	2.53	3.71	0.66	379
1.58	0.01	376.39	445.73	98.16	472
1.62	0.01	1.11	2.45	0.29	472
1.68	0.01	3.43	4.20	0.90	472

Integration Results for MSD1 TIC, MS File

RetTim	Width	Area	Height	Area%	MS (+)
--------	-------	------	--------	-------	--------

1.60 0.03 264883.22 128946.73 100.00 472

Ret. Time: 1.60

<<<< POSITIVE SPECTRA >>>>

ES-API Positive

