

File ..1\DATA\2019\20190726\664\BIZ2019-726-CXL3.D Tgt Mass (CHM):

Injection Date : 26 Jul 19 5:21 pm +0800 Seq. Line : 23

Sample Name : BIZ2019-726-CXL3 Location : P1-C-04

Acq. Operator : ZJ_1432 Inj : 1

Spec. Reported : MS Integration Inj Volume : 1 ul

Acq. Method : D:\Chem32\1\data\2019\20190726\664\1-POS-3MIN.M

Analysis Method : D:\CHEM32\1\DATA\2019\20190726\664\1-POS-3MIN.M

Catalog No : HY-18850 Batch#44307

Method Info : Mobile Phase: A: water(0.01%TFA) B:ACN(0.01%TFA)

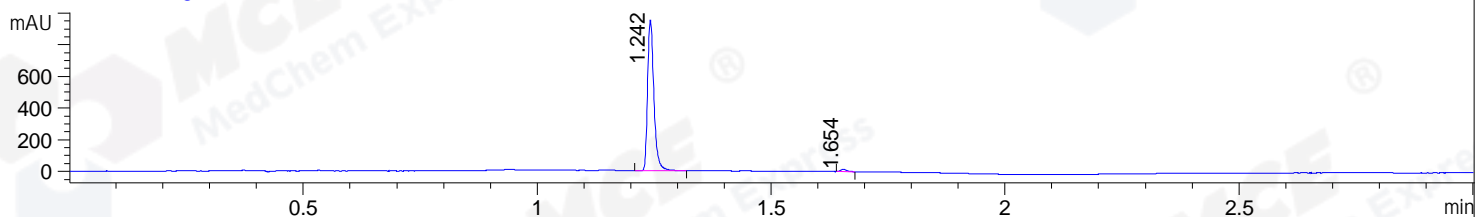
Gradient: 5% to 95%B within 1.3 min

Flow Rate :1.8ml/min

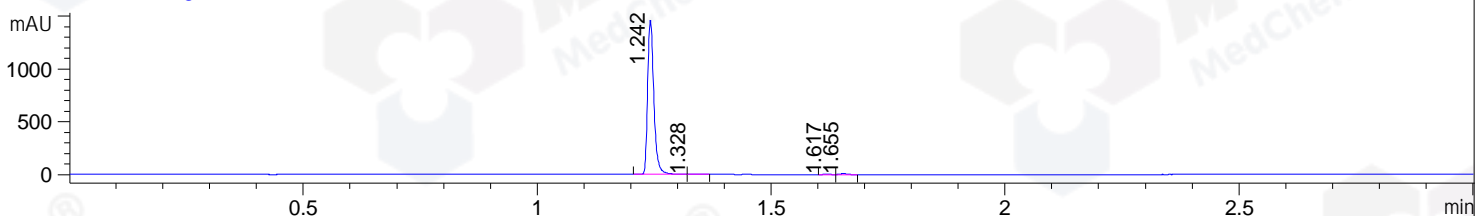
Column :SunFire C18, 4.6*50mm,3.5um A-RP-433

Oven Temperature : 45

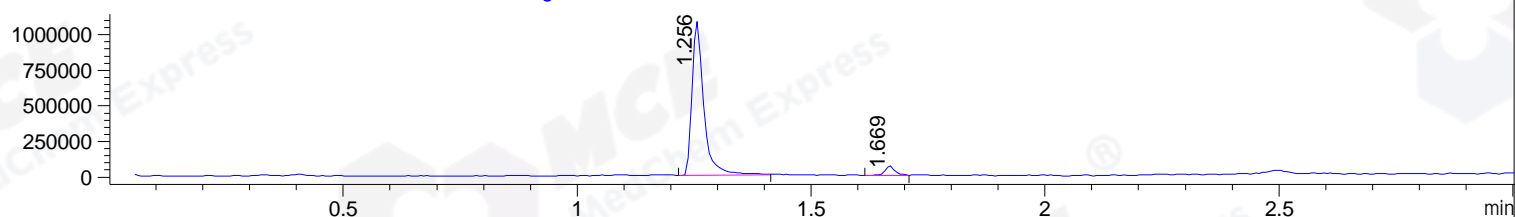
DAD1 B, Sig=214,4 Ref=off



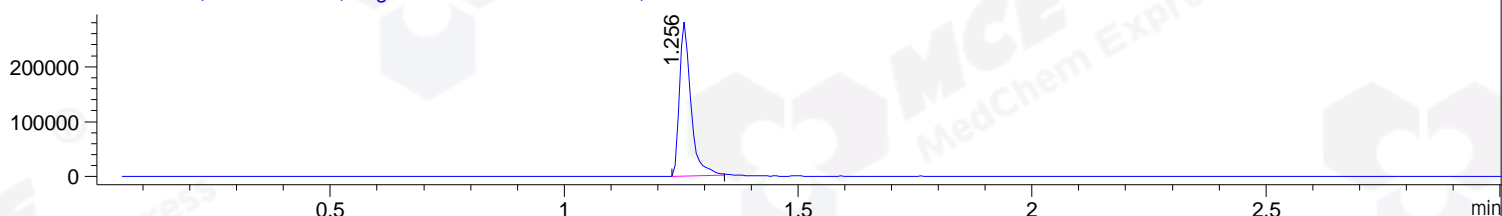
DAD1 C, Sig=254,4 Ref=off



MSD1 TIC, MS File ES-API, Pos, Scan, Frag: 70



Ion 366.19, MSD1 366.19, Target Mass 365.19 +H Positive, EIC=365.89:366.89



Integration Results for DAD1 B, Sig=214,4 Ref=off

RetTim	Width	Area	Height	Area%	MS (+)
1.24	0.02	889.85	954.39	98.47	184
1.65	0.01	13.86	14.78	1.53	333

Integration Results for DAD1 C, Sig=254,4 Ref=off

RetTim	Width	Area	Height	Area%	MS (+)
1.24	0.02	1350.55	1463.73	99.06	184
1.33	0.02	1.94	1.61	0.14	184
1.62	0.02	1.78	1.47	0.13	ND
1.65	0.02	9.11	9.35	0.67	333

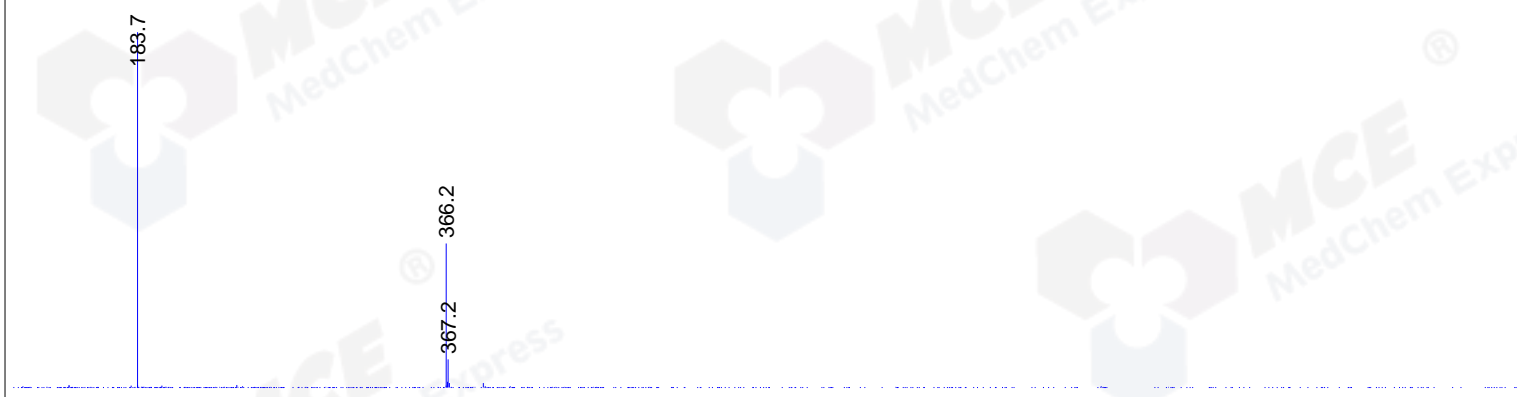
Integration Results for MSD1 TIC, MS File

RetTim	Width	Area	Height	Area%	MS (+)
1.26	0.03	1922491.88	1084290.13	94.64	184
1.67	0.02	108910.27	67480.84	5.36	333

Ret. Time: 1.26

<<<< POSITIVE SPECTRA >>>>

ES-API Positive



Ret. Time: 1.67

ES-API Positive

