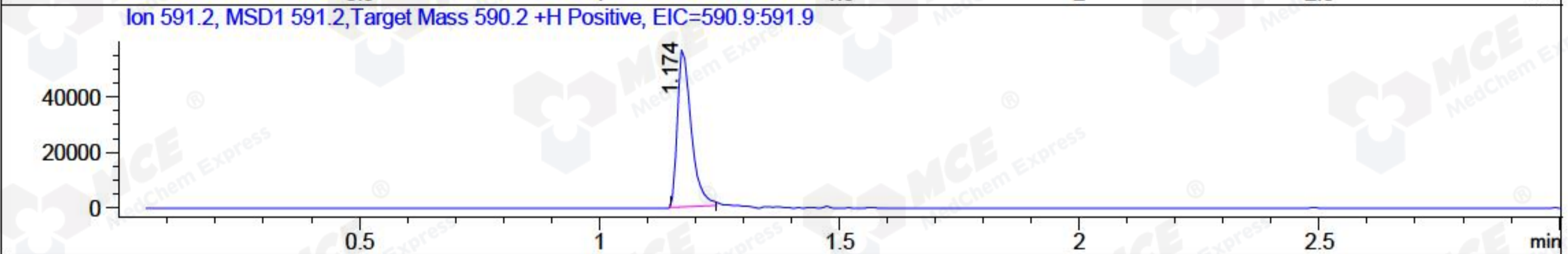
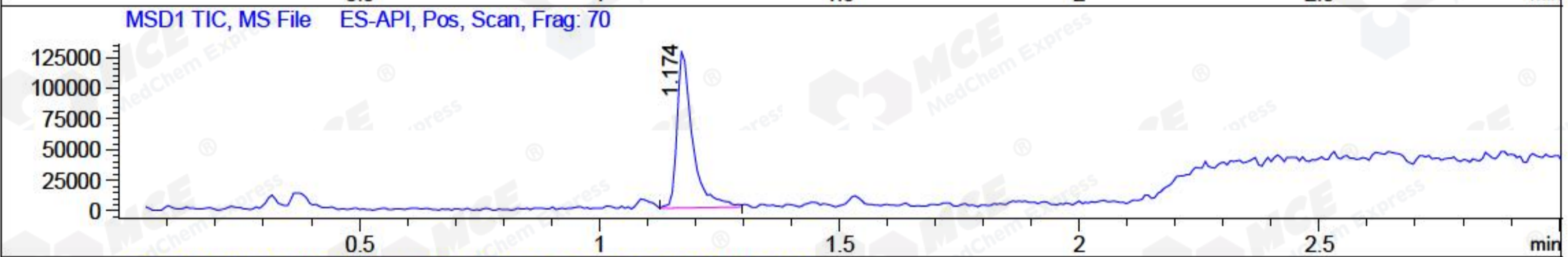
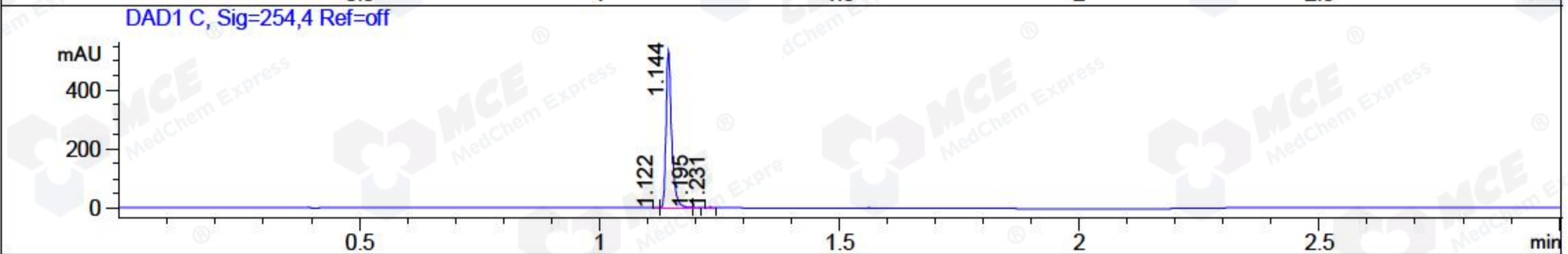
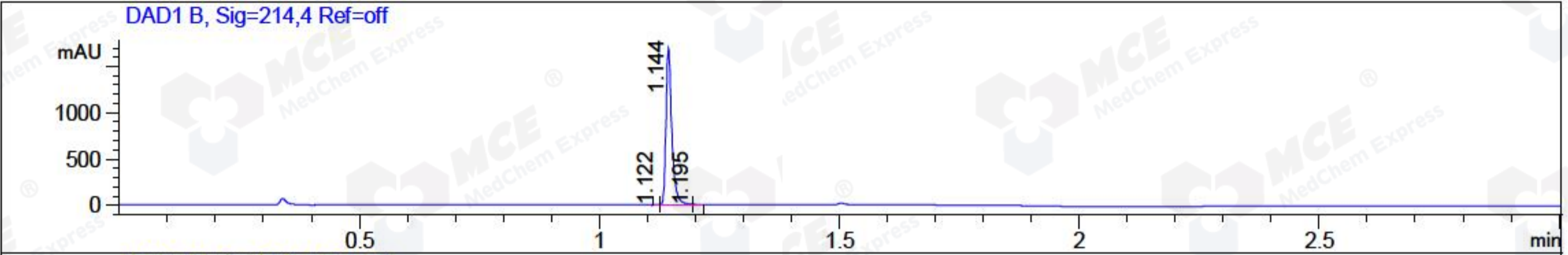


File ..EM32\1\DATA\20180525\211\BIZ2018-525-CXL4.D Tgt Mass (CHM):
 Injection Date : 25 May 18 6:50 pm +0800 Seq. Line : 38
 Sample Name : BIZ2018-525-CXL4 Location : P1-D-08
 Acq. Operator : LQ_1052 Inj : 1
 Spec. Reported : MS Integration Inj Volume : 1 ul
 Acq. Method : D:\chem32\1\DATA\20180525\211\1-POS-3MIN-1.M
 Analysis Method : D:\CHEM32\1\DATA\20180525\211\1-POS-3MIN-1.M
 Catalog No : HY-19324 Batch#30686 A-RP-314
 Method Info : Mobile Phase: A: water(0.01%TFA) B:ACN(0.01%TFA)
 Gradient: 5% to 95%B within 1.3 min
 Flow Rate :1.8ml/min
 Column :SunFire C18, 4.6*50mm,3.5um A-RP-314
 Oven Temperature : 45□



Integration Results for DAD1 B, Sig=214,4 Ref=off

RetTim	Width	Area	Height	Area%	MS (+)
1.12	0.01	1.92	3.40	0.13	ND
1.14	0.01	1449.41	1702.00	99.63	591
1.19	0.01	3.42	5.00	0.24	591

Integration Results for DAD1 C, Sig=254,4 Ref=off

RetTim	Width	Area	Height	Area%	MS (+)
1.12	0.01	0.39	0.71	0.09	ND
1.14	0.01	434.67	534.61	99.66	591
1.20	0.01	0.52	1.08	0.12	591
1.23	0.01	0.58	0.92	0.13	591

Integration Results for MSD1 TIC, MS File

RetTim	Width	Area	Height	Area%	MS (+)
1.17	0.03	286193.44	128843.55	100.00	591

Ret. Time: 1.17

<<<< POSITIVE SPECTRA >>>>

