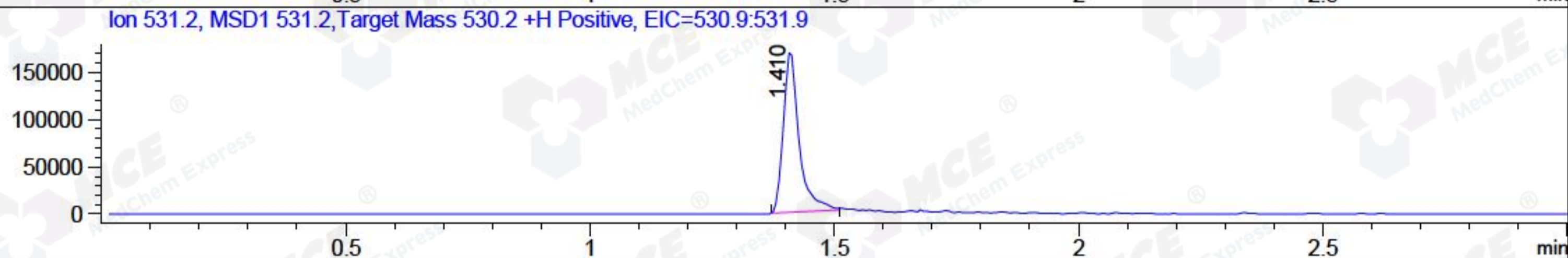
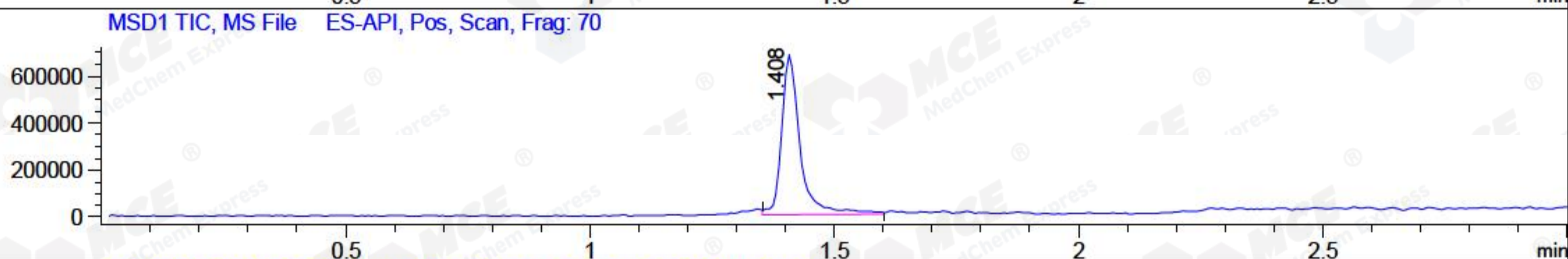
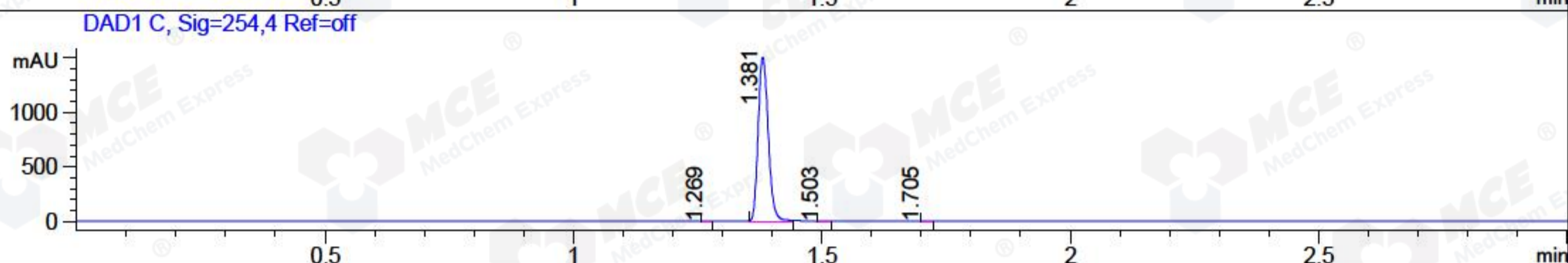
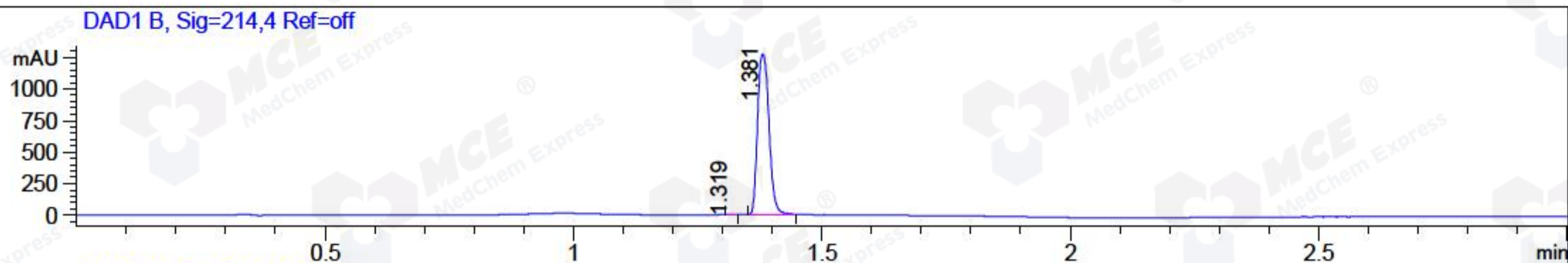


File ..1\DATA\2018\20181121\500\BIZ2018-N21-CXL4.D Tgt Mass (CHM):
 Injection Date : 21 Nov 18 3:58 pm +0800 Seq. Line : 19
 Sample Name : BIZ2018-N21-CXL4 Location : P2-F-01
 Acq. Operator : LQ_1052 Inj : 1
 Spec. Reported : MS Integration Inj Volume : 1 ul
 Acq. Method : D:\Chem32\1\data\2018\20181121\500\1-POS-3MIN-1.M
 Analysis Method : D:\CHEM32\1\DATA\2018\20181121\500\1-POS-3MIN-1.M
 Catalog No : HY-19815 Batch#34592 A-RP-314
 Method Info : Mobile Phase: A: water(0.01%TFA) B:ACN(0.01%TFA)
 Gradient: 5% to 95%B within 1.3 min
 Flow Rate :1.8ml/min
 Column :SunFire C18, 4.6*50mm,3.5um A-RP-314
 Oven Temperature : 45□



Integration Results for DAD1 B, Sig=214,4 Ref=off

RetTim	Width	Area	Height	Area%	MS (+)
1.32	0.01	1.24	1.48	0.06	ND
1.38	0.03	2035.66	1272.95	99.94	266

Integration Results for DAD1 C, Sig=254,4 Ref=off

RetTim	Width	Area	Height	Area%	MS (+)
1.27	0.02	0.50	0.55	0.02	ND
1.38	0.02	2118.38	1505.11	99.94	266
1.50	0.02	0.48	0.46	0.02	531
1.71	0.02	0.33	0.28	0.02	531

Integration Results for MSD1 TIC, MS File

RetTim	Width	Area	Height	Area%	MS (+)
1.41	0.04	1821177.50	682995.13	100.00	266

Ret. Time: 1.41

<<<< POSITIVE SPECTRA >>>>

ES-API Positive

