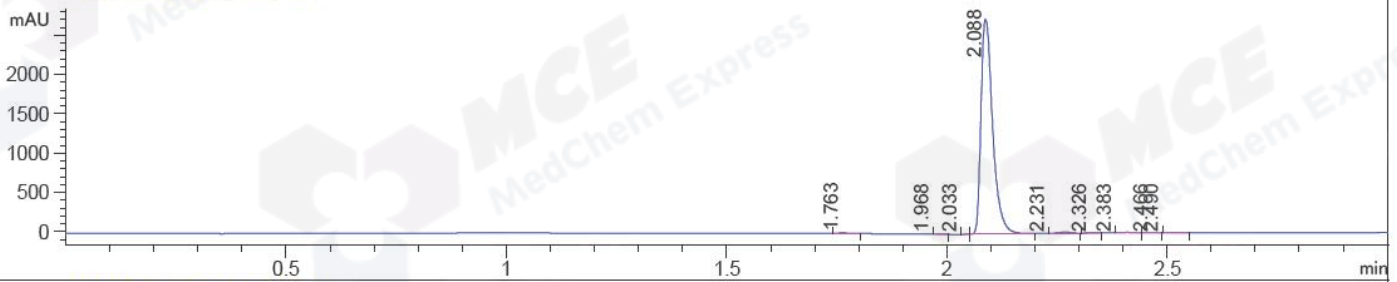
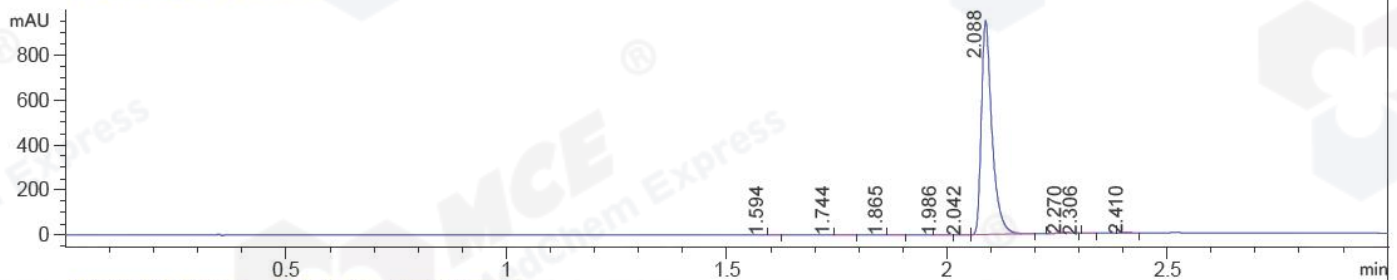


File ..HEM32\1\DATA\20170210\HEC\WYF4045-005-1-1.D Tgt Mass (EZX):
 Injection Date : 10-Feb-17, 17:14:02 Seq. Line : 0
 Sample Name : WYF4045-005-1 Location : P2-E-08
 Acq. Operator : GZZ_718 Inj : 0
 Spec. Reported : MS Integration Inj Volume : 1 ul
 Acq. Method : D:\Chem32\1\METHODS\1-POS-3MIN.M
 Analysis Method : D:\CHEM32\1\METHODS\HY-308_AB10-H01P35(RP-HPLC)-A.M
 Catalog No : HY-19937A Batch#23706 Easy-Access Method: '1-POS-3MIN'
 Method Info : Postive,MS:100-1000,Column ID:A-RP-85,50°C

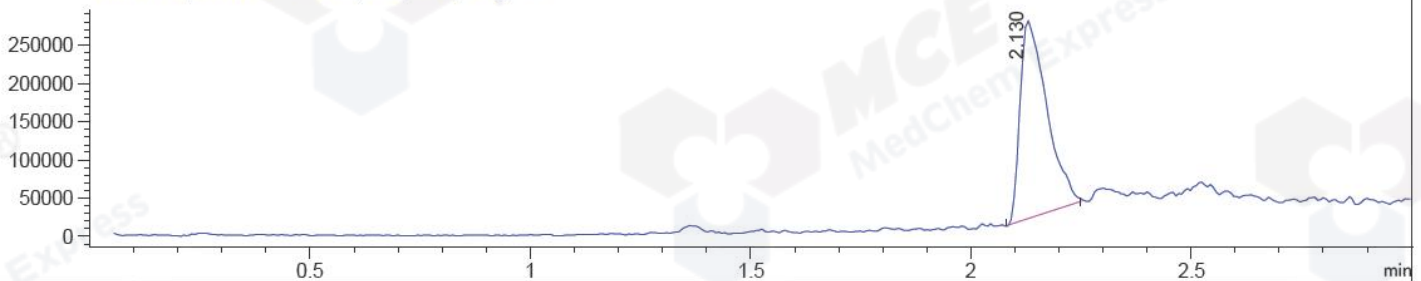
DAD1 B, Sig=214,4 Ref=off



DAD1 C, Sig=254,4 Ref=off



MSD1 TIC, MS File ES-API, Pos, Scan, Frag: 70



Integration Results for DAD1 B, Sig=214,4 Ref=off

RetTim	Width	Area	Height	Area%	MS (+)
1.76	0.03	10.72	7.12	0.21	233
1.97	0.02	2.66	0.23	0.05	233
2.03	0.01	0.43	-0.00	0.01	233
2.09	0.03	5038.00	2758.19	98.85	440
2.23	0.03	27.03	-0.08	0.53	440
2.33	0.02	4.11	2.90	0.08	141
2.38	0.03	9.15	0.12	0.18	141
2.47	0.03	1.67	1.00	0.03	141
2.49	0.03	3.05	0.23	0.06	233

Integration Results for DAD1 C, Sig=254,4 Ref=off

RetTim	Width	Area	Height	Area%	MS (+)
1.59	0.02	0.51	0.02	0.03	141
1.74	0.02	2.14	0.08	0.13	233
1.87	0.03	0.61	0.01	0.04	141
1.99	0.02	1.58	1.18	0.10	233
2.04	0.02	0.27	0.23	0.02	233

2.09	0.03	1595.47	952.35	98.90	440
2.27	0.03	8.41	4.37	0.52	440
2.31	0.02	0.87	0.13	0.05	141
2.41	0.03	3.27	1.89	0.20	141

Ret. Time: 2.13

<<<< POSITIVE SPECTRA >>>>

