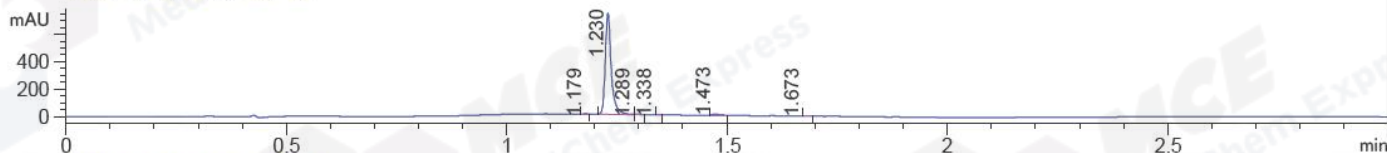


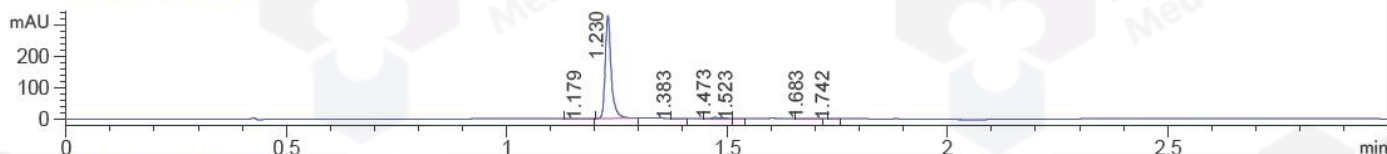
File ..\Data\20170926\20170926\CPK2017-926-06745.D Tgt Mass (CHM):

Injection Date : 26 Sep 17 1:41 pm +0800 Seq. Line : 41
 Sample Name : CPK2017-926-06745 Location : P1-C-05
 Acq. Operator : SYSTEM Inj : 1
 Spec. Reported : MS Integration Inj Volume : 1 ul
 Acq. Method : D:\LCMS03\Data\20170926\20170926\1-POS-3MIN.M
 Analysis Method : D:\LCMS03\Data\20170926\20170926\1-POS-3MIN.M
 Catalog No : HY-50940A Batch#06745
 Method Info : Mobile Phase: A: water(0.01%TFA) B:ACN(0.01%TFA)
 Gradient: 5% to 95%B within 1.3 min
 Flow Rate :1.8ml/min
 Column :SunFire C18, 4.6*50mm,3.5um A-RP-186
 Oven Temperature : 45C

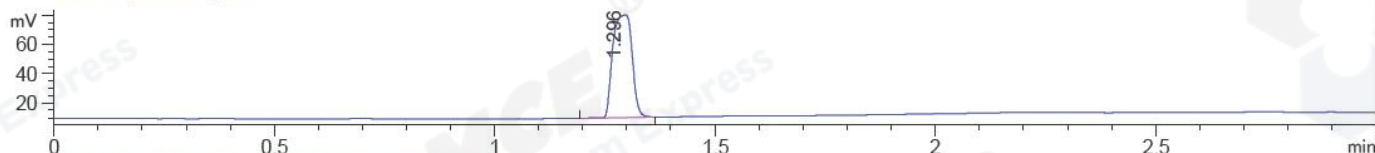
DAD1 A, Sig=214,4 Ref=off



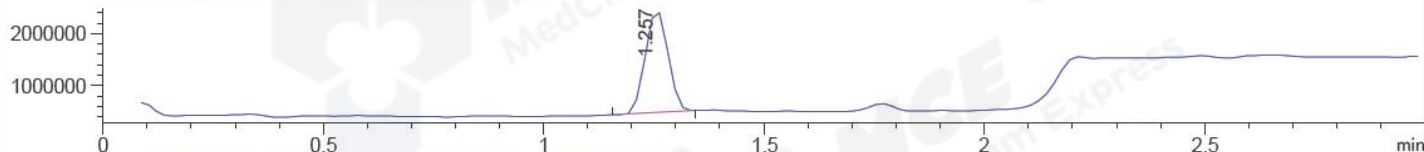
DAD1 B, Sig=254,4 Ref=off



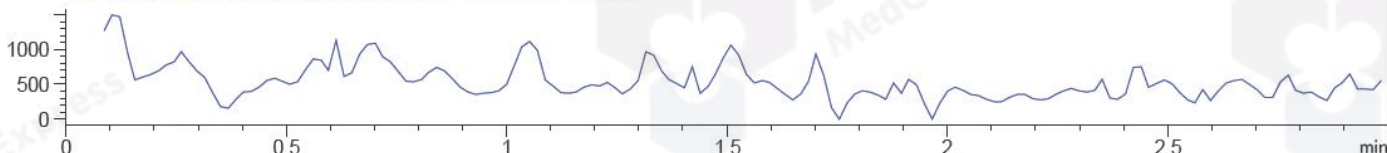
ELS1 A, ELSD Signal



MSD1 TIC, MS File ES-API, Pos, Scan, Frag: 70



Ion 496.3, MSD1 496.3, Target Mass 496.3 Positive, EIC=496:497



Integration Results for DAD1 A, Sig=214,4 Ref=off

RetTim	Width	Area	Height	Area%	MS (+)
1.18	0.01	1.23	1.98	0.17	443
1.23	0.02	690.99	734.10	98.06	382
1.29	0.01	1.06	1.44	0.15	382
1.34	0.01	0.52	-0.31	0.07	443
1.47	0.02	9.52	9.08	1.35	443
1.67	0.01	1.36	0.05	0.19	443

Integration Results for DAD1 B, Sig=254,4 Ref=off

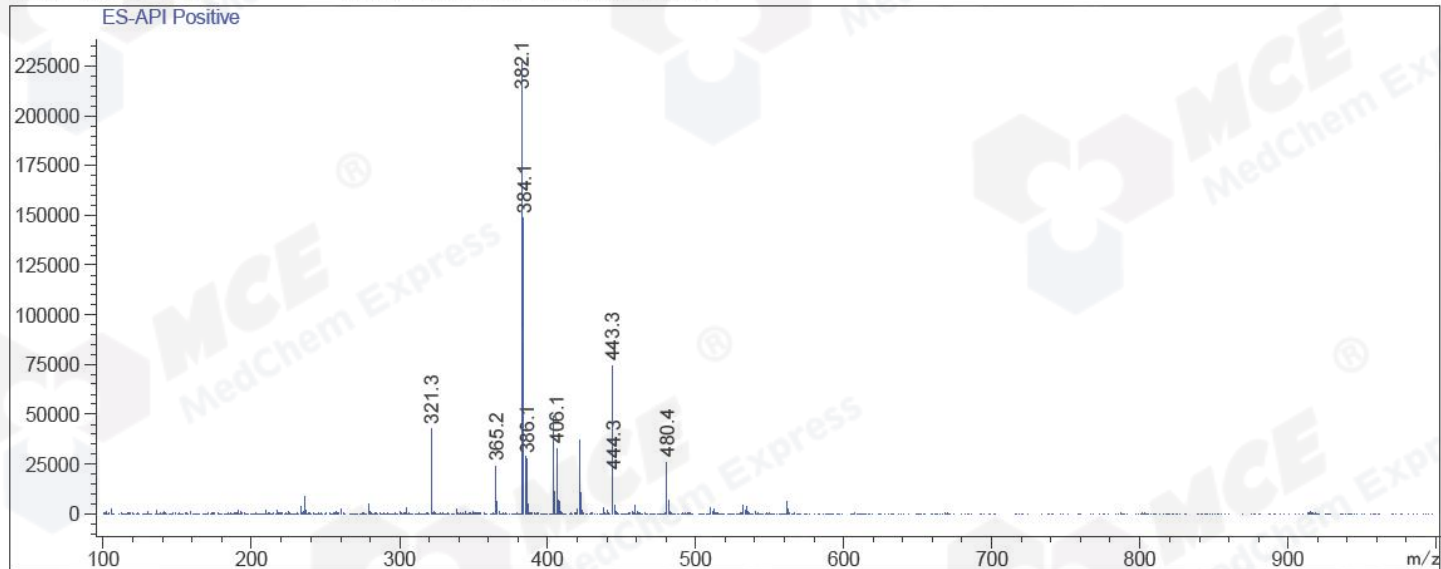
RetTim	Width	Area	Height	Area%	MS (+)
1.18	0.02	0.42	0.36	0.13	443
1.23	0.01	309.16	326.56	98.16	382
1.38	0.01	0.17	0.21	0.05	443
1.47	0.02	3.70	2.97	1.17	443
1.52	0.01	0.18	0.27	0.06	443
1.68	0.02	0.96	0.83	0.30	443
1.74	0.02	0.36	0.37	0.12	443

Integration Results for MSD1 TIC, MS File

RetTim	Width	Area	Height	Area%	MS (+)
1.26	0.06	7099605.50	1967382.50	100.00	382

Ret. Time: 1.26

<<<< POSITIVE SPECTRA >>>>



*** End of Report ***