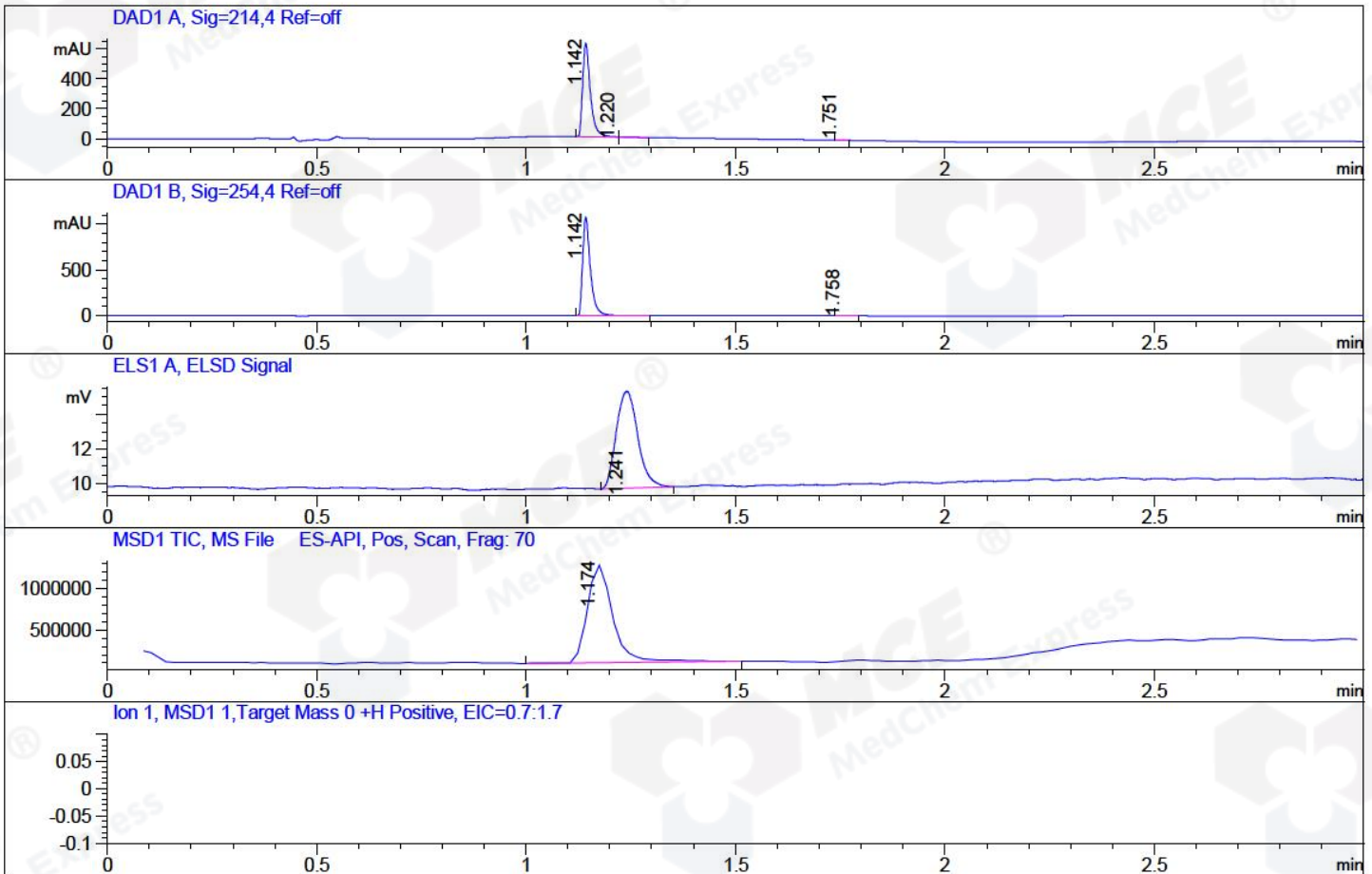


File ..1\20180516-1\020-P2-B11-CPK2018-515-05561.D Tgt Mass (CHM):
 Injection Date : 16 May 18 7:39 pm +0800 Seq. Line : 20
 Sample Name : CPK2018-515-05561 Location : P2-B-11
 Acq. Operator : SYSTEM Inj : 1
 Spec. Reported : MS Integration Inj Volume : 1 ul
 Acq. Method : D:\LCMS03\Data\2018\20180516-1\20180516-1\1-POS-3MIN.M
 Analysis Method : D:\LCMS03\Data\2018\20180516-1\20180516-1\1-POS-3MIN.M
 Catalog No : HY-A0022A Batch#05561
 Method Info : Mobile Phase: A: water(0.01%TFA) B:ACN(0.01%TFA)
 Gradient: 5% to 95%B within 1.3 min
 Flow Rate :1.8ml/min
 Column :SunFire C18, 4.6*50mm,3.5um A-RP-186
 Oven Temperature : 45C



Integration Results for DAD1 A, Sig=214,4 Ref=off

RetTim	Width	Area	Height	Area%	MS (+)
1.14	0.02	797.05	622.48	99.60	298
1.22	0.03	2.44	1.37	0.31	298
1.75	0.02	0.75	0.55	0.09	233

Integration Results for DAD1 B, Sig=254,4 Ref=off

RetTim	Width	Area	Height	Area%	MS (+)
1.14	0.02	1388.16	1072.17	99.94	298
1.76	0.03	0.88	0.45	0.06	233

Integration Results for ELS1 A, ELSD Signal

RetTim	Width	Area	Height	Area%	MS (+)
1.24	0.06	20.31	5.65	100.00	298

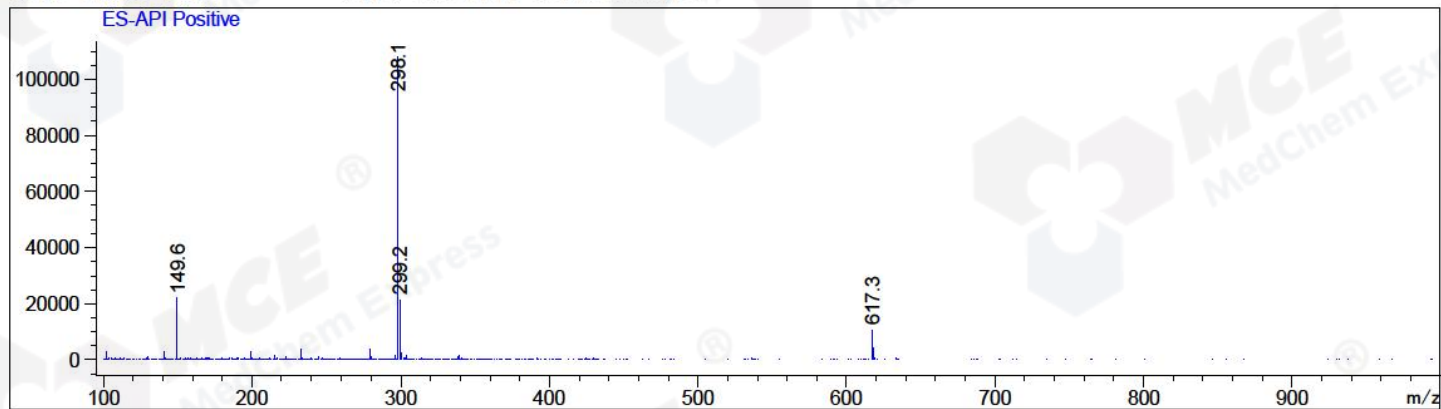
Integration Results for MSD1 TIC, MS File

-----|-----|-----|-----|-----|-----|
1.17 0.07 5011764.00 1176810.13 100.00 298

RetTim	Width	Area	Height	Area%	MS (+)
--------	-------	------	--------	-------	--------

Ret. Time: 1.17

<<<< POSITIVE SPECTRA >>>>



*** End of Report ***