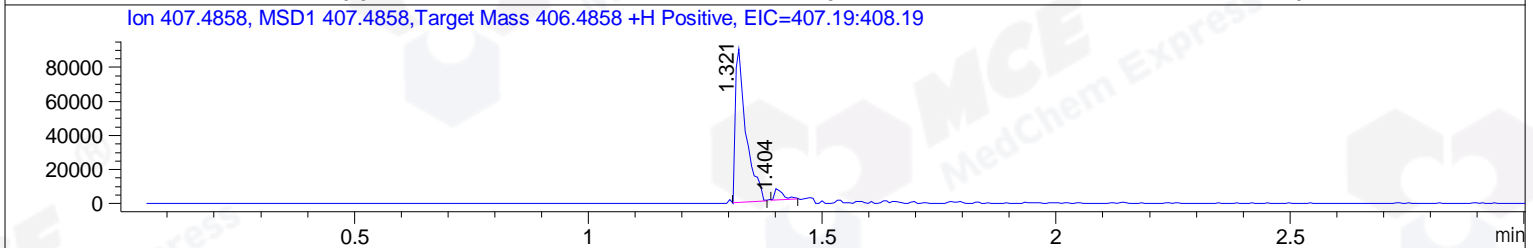
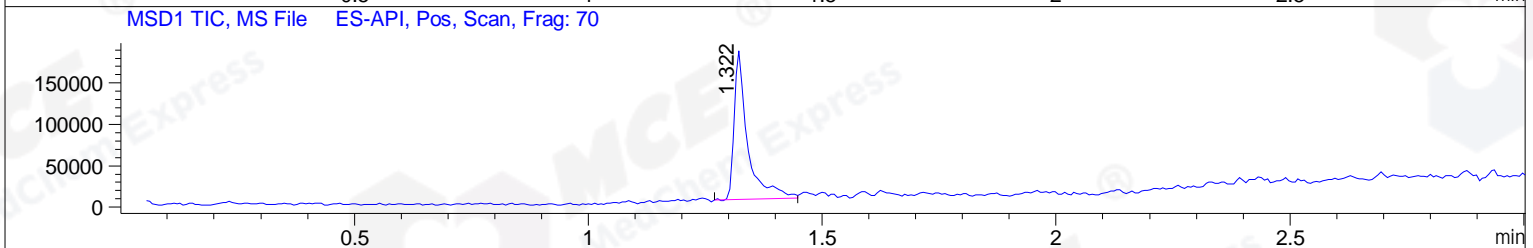
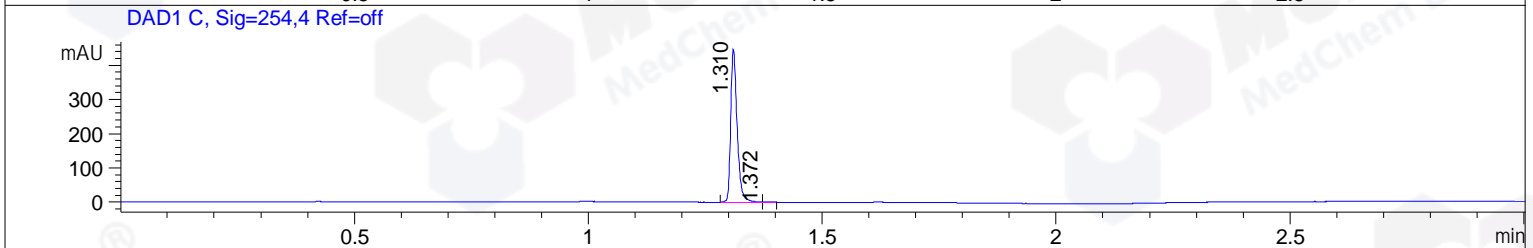
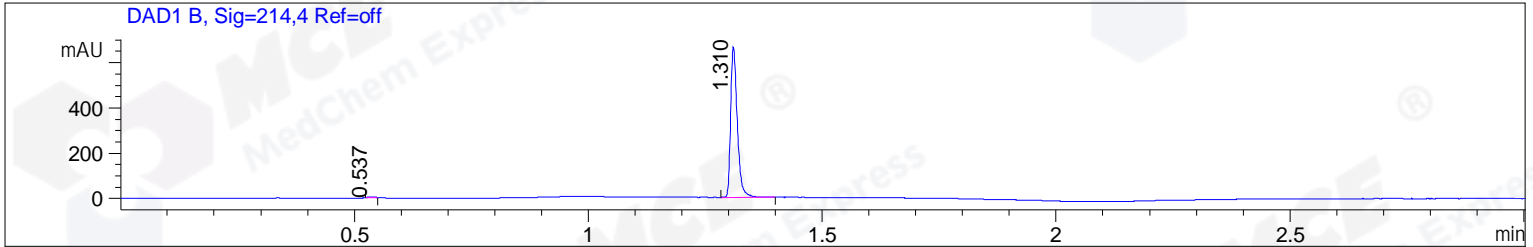


File ..DATA\2019\20190822\705\CPK2019-822-11751-.D Tgt Mass (CHM):
 Injection Date : 22 Aug 19 2:09 pm +0800 Seq. Line : 68
 Sample Name : CPK2019-822-11751 Location : P1-C-05
 Acq. Operator : ZJ_1432 Inj : 1
 Spec. Reported : MS Integration Inj Volume : 0.3 ul
 Acq. Method : D:\Chem32\1\data\2019\20190822\705\1-POS-3MIN.M
 Analysis Method : D:\CHEM32\1\DATA\2019\20190822\705\1-POS-3MIN.M
 Catalog No : HY-B0006 Batch#11751
 Method Info : Mobile Phase: A: water(0.01%TFA) B:ACN(0.01%TFA)
 Gradient: 5% to 95%B within 1.3 min
 Flow Rate :1.8ml/min
 Column :SunFire C18, 4.6*50mm,3.5um A-RP-433
 Oven Temperature : 45



Integration Results for DAD1 B, Sig=214,4 Ref=off

| RetTim | Width | Area | Height | Area% | MS (+) |
|--------|-------|--------|--------|-------|--------|
| 0.54 | 0.02 | 3.52 | 3.66 | 0.53 | ND |
| 1.31 | 0.02 | 655.86 | 664.87 | 99.47 | 407 |

Integration Results for DAD1 C, Sig=254,4 Ref=off

| RetTim | Width | Area | Height | Area% | MS (+) |
|--------|-------|--------|--------|-------|--------|
| 1.31 | 0.02 | 426.57 | 447.38 | 99.85 | 407 |
| 1.37 | 0.01 | 0.65 | 0.75 | 0.15 | 407 |

Integration Results for MSD1 TIC, MS File

| RetTim | Width | Area | Height | Area% | MS (+) |
|--------|-------|-----------|-----------|--------|--------|
| 1.32 | 0.03 | 364931.88 | 180409.38 | 100.00 | 407 |

Ret. Time: 1.32

<<<< POSITIVE SPECTRA >>>>

ES-API Positive

