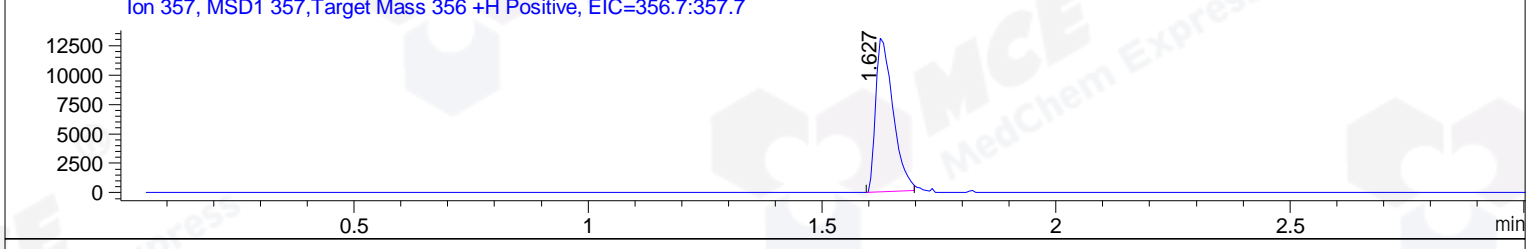
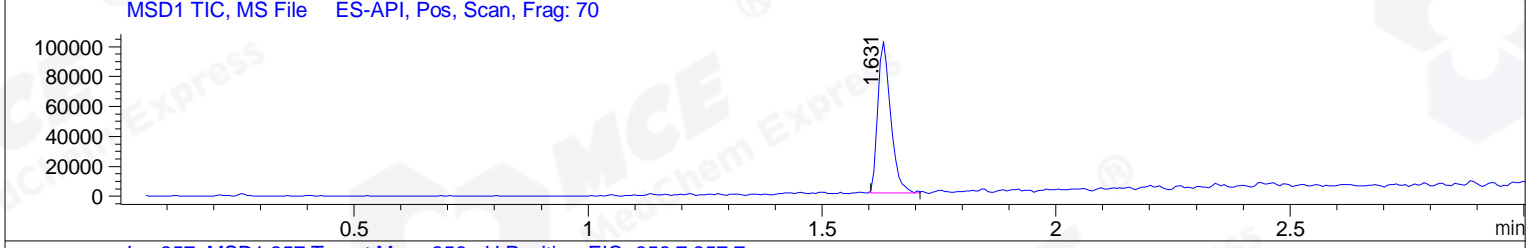
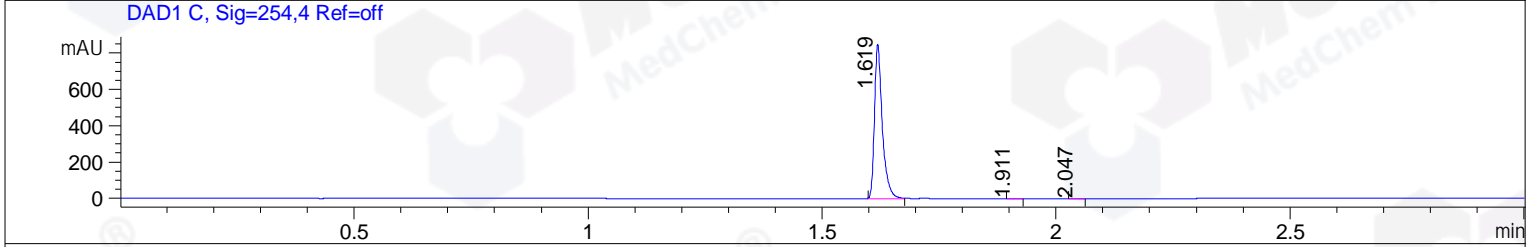
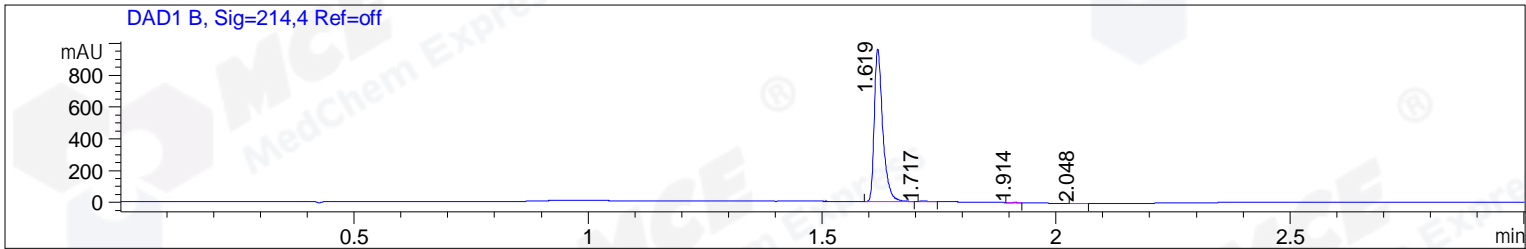


File ..\DATA\2019\20191104\755\CPK2019-N04-23701.D Tgt Mass (CHM):
 Injection Date : 4 Nov 19 10:22 pm +0800 Seq. Line : 63
 Sample Name : CPK2019-N04-23701 Location : PL-D-02
 Acq. Operator : ZJ_1432 Inj : 1
 Spec. Reported : MS Integration Inj Volume : 1 ul
 Acq. Method : D:\Chem32\1\data\2019\20191104\755\1-POS-3MIN.M
 Analysis Method : D:\CHEM32\1\DATA\2019\20191104\755\1-POS-3MIN.M
 Catalog No : HY-B0008 Batch# 23701
 Method Info : Mobile Phase: A: water(0.01%TFA) B:ACN(0.01%TFA)
 Gradient: 5% to 95%B within 1.3 min
 Flow Rate :1.8ml/min
 Column :SunFire C18, 4.6*50mm,3.5um A-RP-433
 Oven Temperature : 45



Integration Results for DAD1 B, Sig=214,4 Ref=off

RetTim	Width	Area	Height	Area%	MS (+)
1.62	0.02	1208.02	959.82	99.46	735
1.72	0.02	3.23	2.51	0.27	ND
1.91	0.02	1.56	1.70	0.13	ND
2.05	0.02	1.77	1.57	0.15	ND

Integration Results for DAD1 C, Sig=254,4 Ref=off

RetTim	Width	Area	Height	Area%	MS (+)
1.62	0.02	990.89	849.33	99.78	735
1.91	0.02	1.08	1.18	0.11	ND
2.05	0.02	1.10	1.19	0.11	ND

Integration Results for MSD1 TIC, MS File

RetTim	Width	Area	Height	Area%	MS (+)
1.63	0.03	193393.58	101092.73	100.00	735

Ret. Time: 1.63

<<<< POSITIVE SPECTRA >>>>

ES-API Positive

