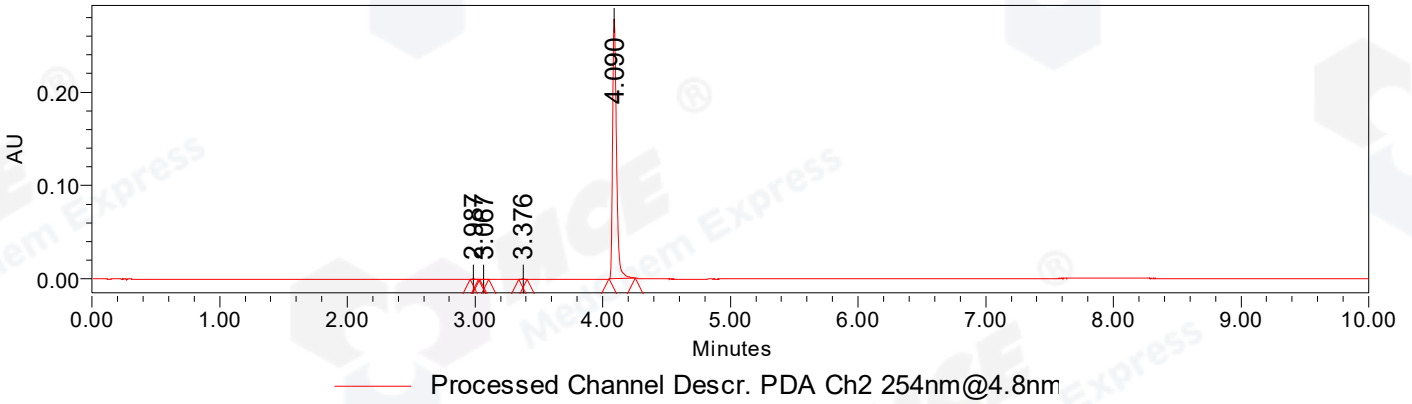


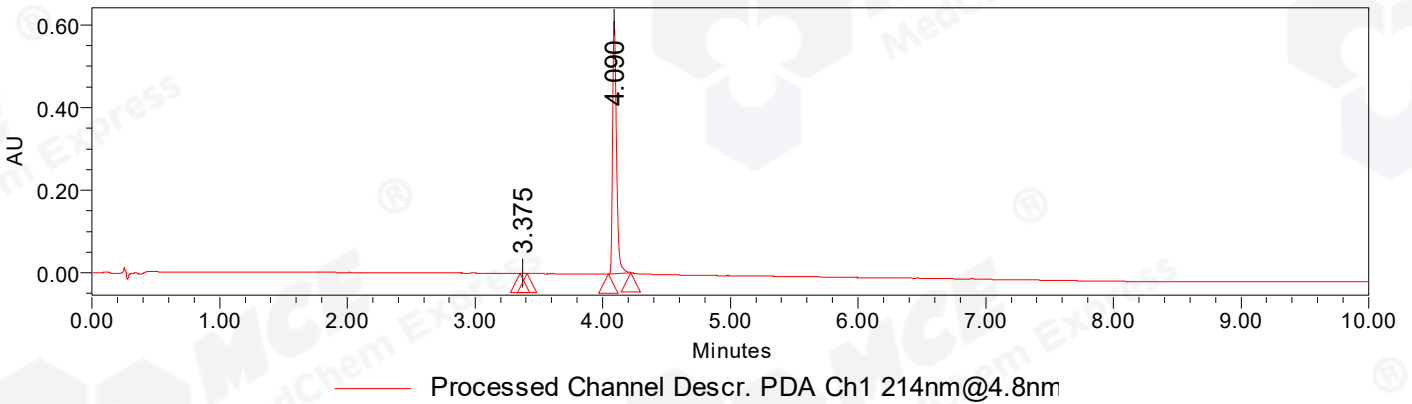
### SAMPLE INFORMATION

CAS NO.:	13311-84-7	Acquired By:	LY
Sample Information:		Date Acquired:	4/23/2022 2:52:11 PM CST
Vial:	1:E,3	Acq. Method Set:	1_POS_10MIN
Injection #:	1	Date Processed:	4/23/2022 5:49:33 PM CST,
Injection Volume:	0.50 ul	Processing Method:	PDA_01, MS_scan
Run Time:	11.0 Minutes	Sample Set Name:	20220423
Method Information :	Mobile Phase: A: waters(0.01%FA) B:ACN(0.01%FA)		
	Gradient: 5% to 95%B within 8.0min		
	Flow Rate :0.6ml/min		
	Column :Poroshell 120 EC- C18, 2.1*50mm,1.9um A-RP-750		
	Oven Temperature : 45C		

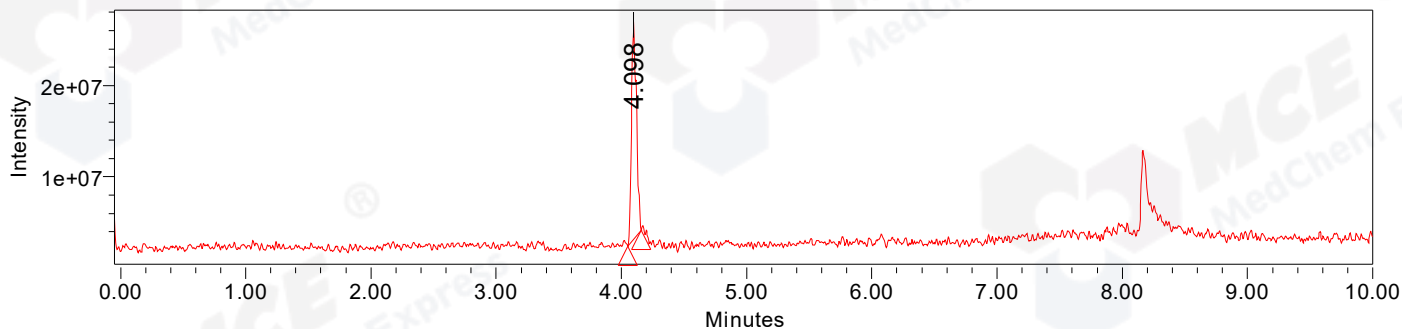
Auto-Scaled Chromatogram



Auto-Scaled Chromatogram



### Auto-Scaled Chromatogram



Processed Channel Descr. ACQ-SQD2 1: MS Scan MS TIC, Smoothed by 9 point Savitzky-Golay Filter., Time offset by -0.053 mins. (1: 150.00-2000.00 ES+, Centroid, CV=30)

#### Peak Results

Channel Name: PDA Ch2 254nm@4.8nm

	RT	Width (sec)	Area	Height	% Area	Base Peak (Combined) (m/z)	Channel Name
1	2.987	3.850	886	486	0.15	167.07	PDA Ch2 254nm@4.8nm
2	3.067	4.200	570	312	0.10	182.10	PDA Ch2 254nm@4.8nm
3	3.376	3.950	645	413	0.11	152.16	PDA Ch2 254nm@4.8nm
4	4.090	12.150	590505	278499	99.65	277.13	PDA Ch2 254nm@4.8nm

#### Peak Results

Channel Name: PDA Ch1 214nm@4.8nm

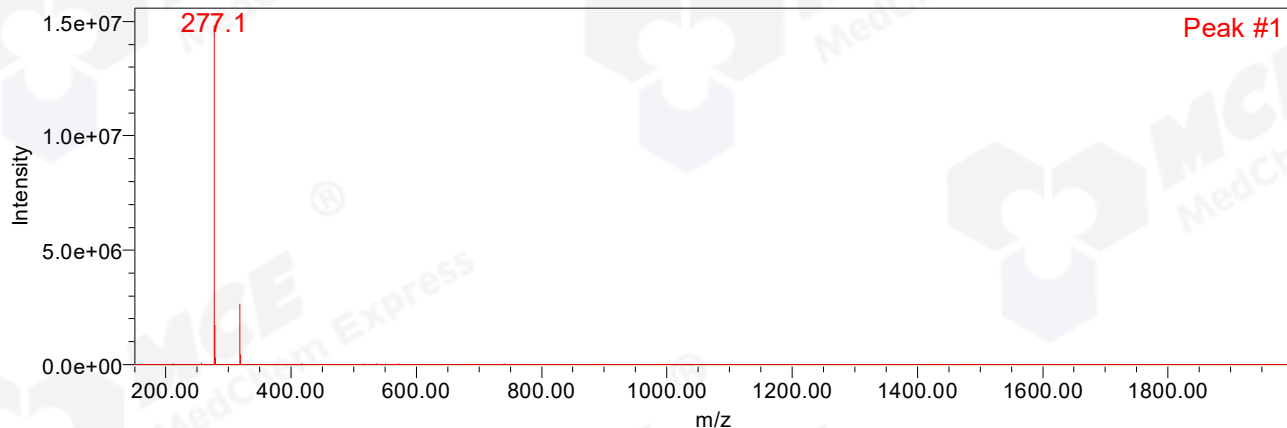
	RT	Width (sec)	Area	Height	% Area	Base Peak (Combined) (m/z)	Channel Name
1	3.375	3.300	1319	889	0.10	152.16	PDA Ch1 214nm@4.8nm
2	4.090	10.250	1288831	612466	99.90	277.14	PDA Ch1 214nm@4.8nm

#### Peak Results

Channel Name: MS TIC

	RT	Width (sec)	Area	Height	% Area	Base Peak (Combined) (m/z)	Channel Name
1	4.098	6.493	67506802	23595741	100.00	277.14	MS TIC

Match Plot



Retention Time 4.098 Channel Name MS TIC