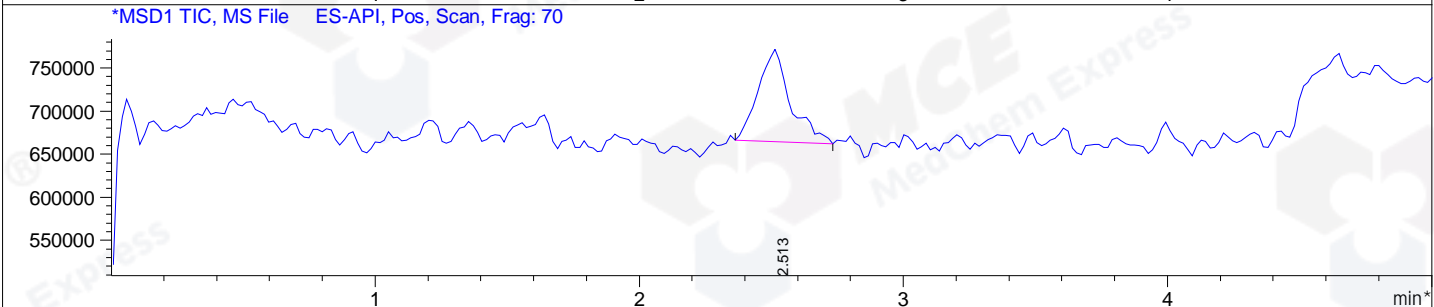
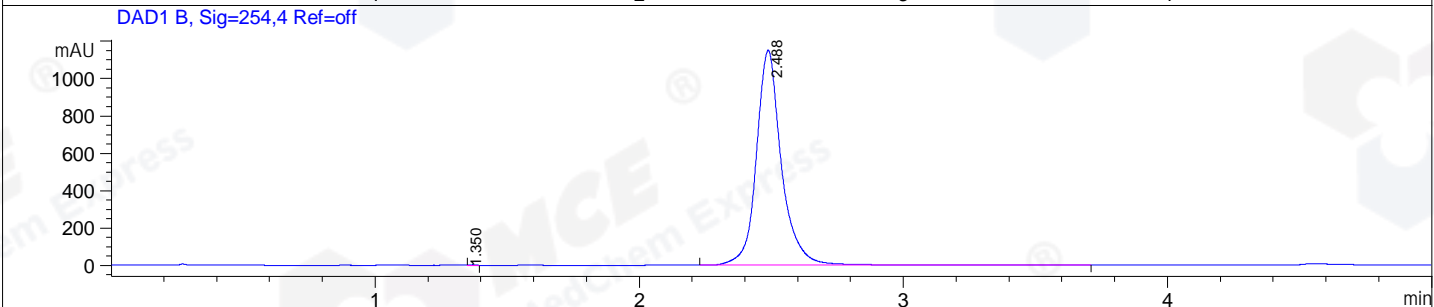
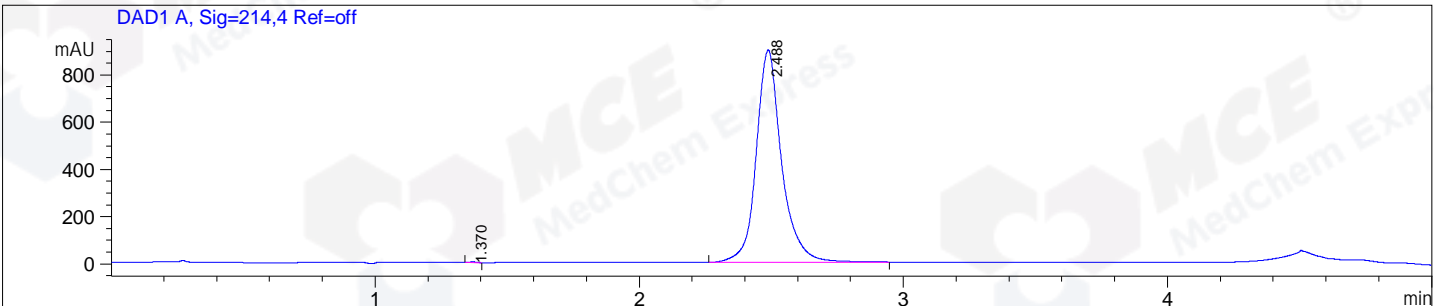


File E:\ChemStation\1\DATA\2024\2024-04\2024-04-23\BIZ2024-422-SCH37-UPLC-MS-10-031941.D
 Injection Date : 23-Apr-24, 14:24:28 Tgt Mass(EZX) :
 Sample Name : BIZ2024-422-SCH37 Location : P1-E-11
 Acq. Operator : LY_2278 Inj : 1
 Spec. Reported : MS Integration Inj Volume : 1 ul
 Acq. Method : E:\ChemStation\1\Methods\1-POS-UPLC5.0MIN(0.5)(10-2000)-C1.M
 Analysis Method : E:\CHEMSTATION\1\METHODS\1-POS-UPLC5.0MIN(0.5)(10-2000)-C1.M
 CAS NO. : 73-24-5 WalkUp method: '1-POS-UPLC5.0MIN(0.5)(10-2000)-C1' Project: BIZ2024
 Method Info : Mobile Phase: A: water(0.01%TFA) B:ACN(0.01%TFA)
 Gradient: 5% to 95%B within 4.0 min
 Flow Rate : 0.5ml/min
 Column : ZORBAX SB-Aq, 3.0*100mm,3.5um
 Oven Temperature : 45C



Integration Results for DAD1 A, Sig=214,4 Ref=off

RetTim	Width	Area	Height	Area%
1.37	0.02	4.07	3.79	0.07
2.49	0.11	5999.72	898.59	99.93

Integration Results for DAD1 B, Sig=254,4 Ref=off

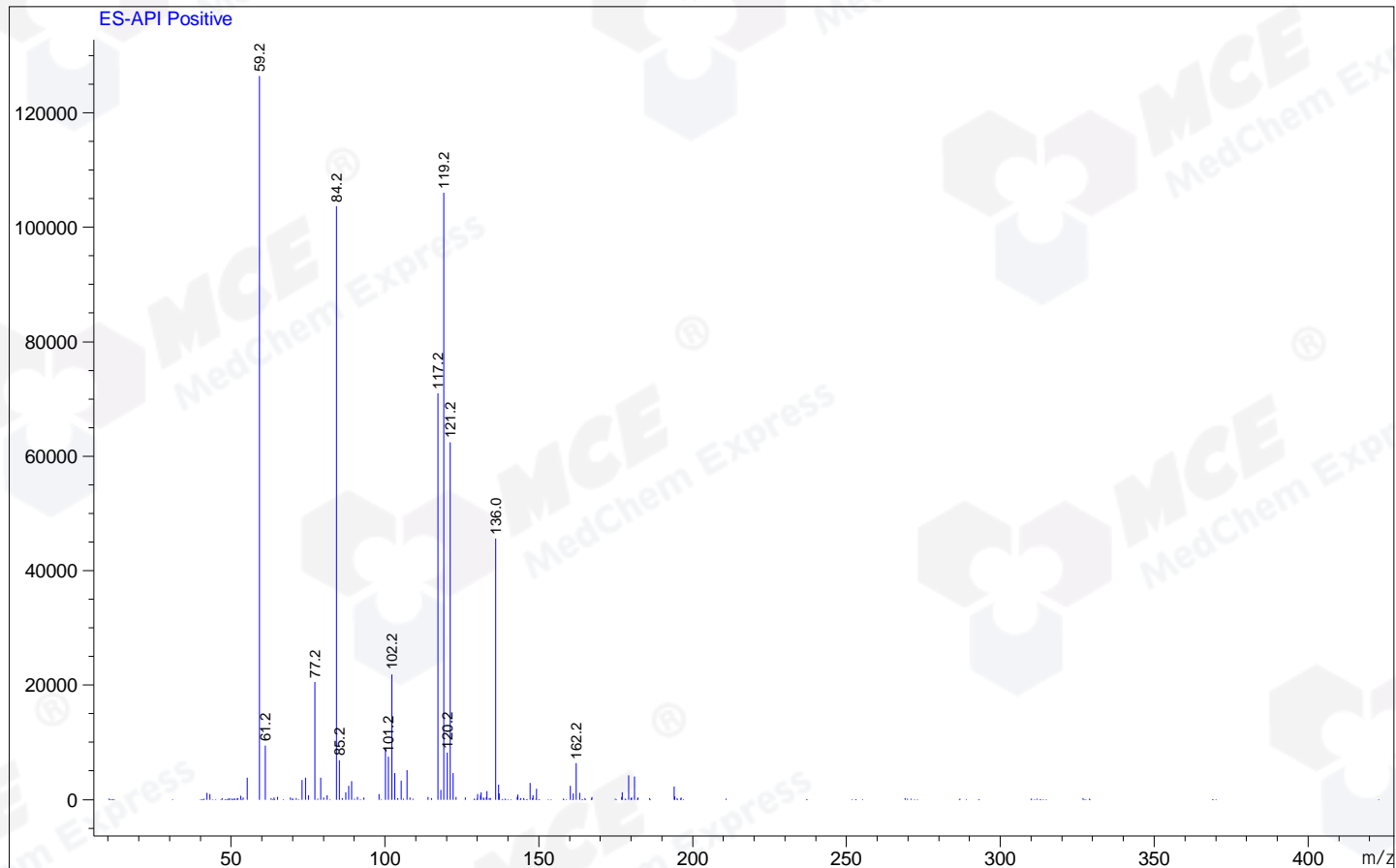
RetTim	Width	Area	Height	Area%
1.35	0.02	4.68	0.60	0.06
2.49	0.10	7601.70	1149.98	99.94

Integration Results for MSD1 TIC, MS File

RetTim	Width	Area	Height	Area%
2.51	0.11	911932.19	106982.38	100.00

Ret. Time: 2.51

<<<< POSITIVE SPECTRA >>>>



*** End of Report ***