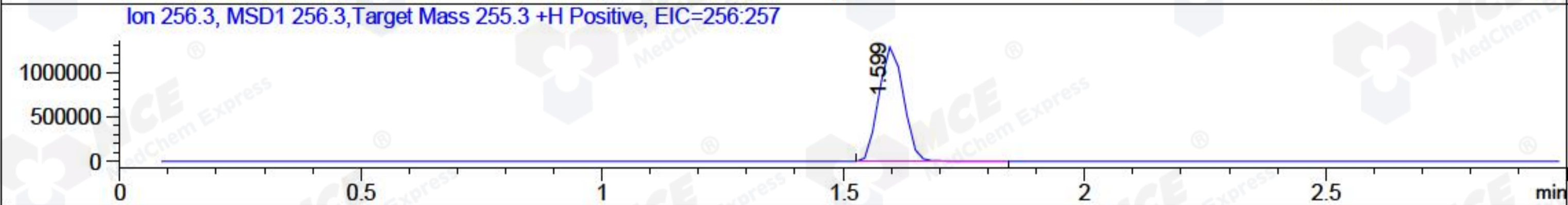
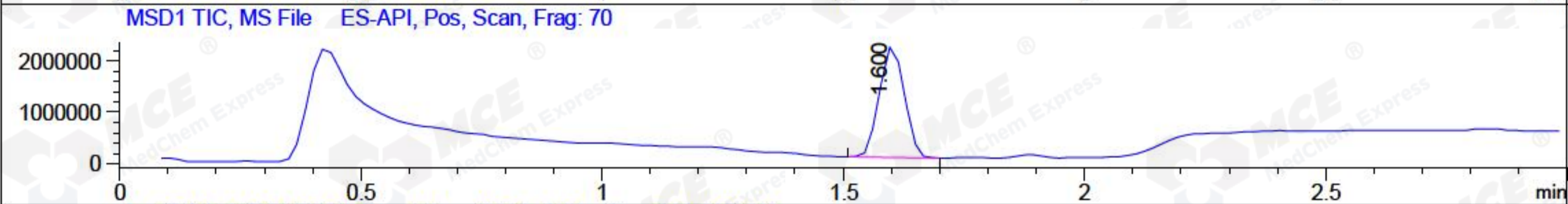
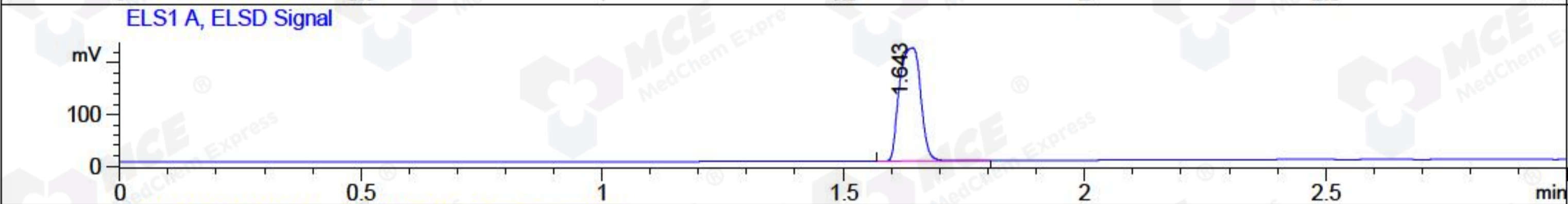
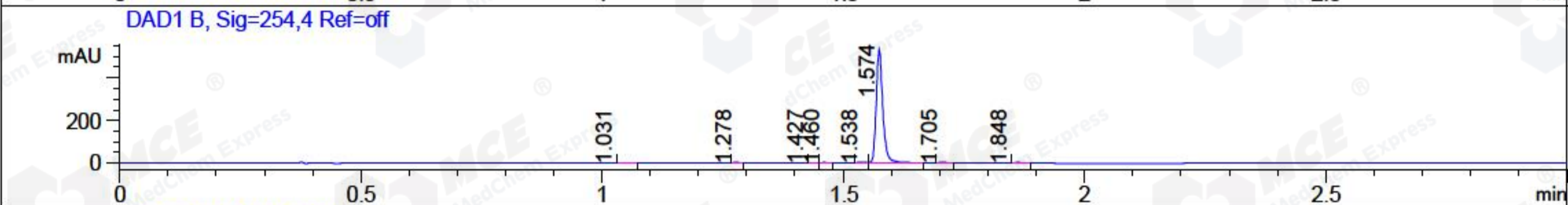
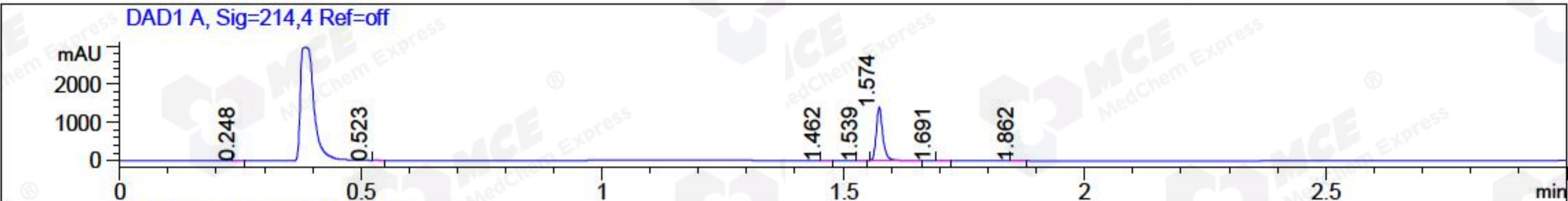


File ..018\20180302\20180302 1\CPK2018-227-15958.D Tgt Mass (CHM):
 Injection Date : 2 Mar 18 12:43 pm +0800 Seq. Line : 28
 Sample Name : CPK2018-227-15958 Location : P1-D-04
 Acq. Operator : SYSTEM Inj : 1
 Spec. Reported : MS Integration Inj Volume : 1 ul
 Acq. Method : D:\LCMS03\Data\2018\20180302\20180302 1\1-POS-3MIN.M
 Analysis Method : D:\LCMS03\Data\2018\20180302\20180302 1\1-POS-3MIN.M
 Catalog No : HY-B0336 Batch#15958
 Method Info : Mobile Phase: A: water(0.01%TFA) B:ACN(0.01%TFA)
 Gradient: 5% to 95%B within 1.3 min
 Flow Rate :1.8ml/min
 Column :SunFire C18, 4.6*50mm,3.5um A-RP-186
 Oven Temperature : 45C



Integration Results for DAD1 A, Sig=214,4 Ref=off

RetTim	Width	Area	Height	Area%	MS (+)
0.25	0.01	0.54	0.86	0.04	303
0.52	0.02	4.82	3.54	0.36	157
1.46	0.02	3.37	3.03	0.25	157
1.54	0.01	1.46	1.95	0.11	157
1.57	0.02	1311.39	1396.58	98.48	256
1.69	0.01	3.60	-0.22	0.27	105
1.86	0.02	6.43	6.98	0.48	284

Integration Results for DAD1 B, Sig=254,4 Ref=off

RetTim	Width	Area	Height	Area%	MS (+)
1.03	0.03	0.62	-0.05	0.12	157
1.28	0.01	1.17	1.37	0.23	157
1.43	0.01	0.42	0.13	0.08	157
1.46	0.02	0.77	0.74	0.15	157
1.54	0.01	1.25	1.51	0.24	157
1.57	0.01	503.40	530.50	98.33	256
1.71	0.02	1.88	2.00	0.37	105

1.85 0.02 2.43 0.01 0.47 284

Integration Results for ELS1 A, ELSD Signal

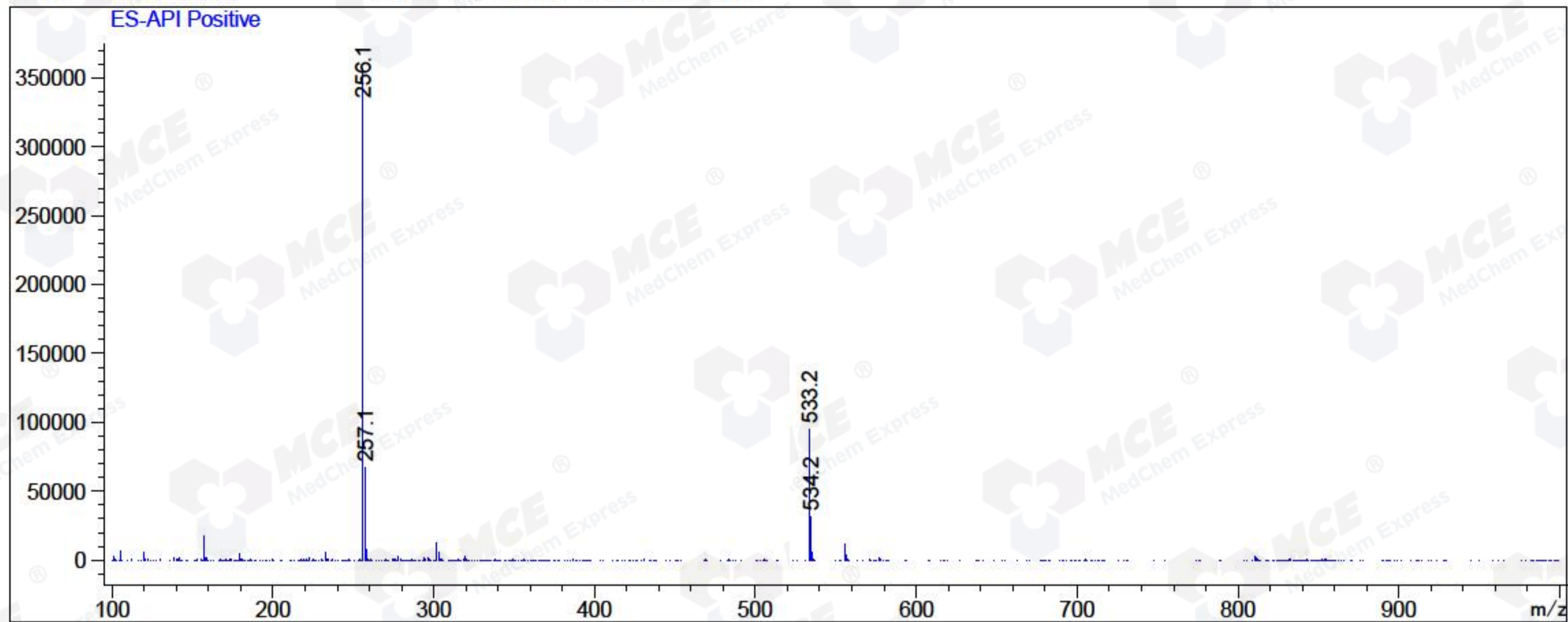
RetTim	Width	Area	Height	Area%	MS (+)
1.64	0.05	666.00	218.13	100.00	256

Integration Results for MSD1 TIC, MS File

RetTim	Width	Area	Height	Area%	MS (+)
1.60	0.06	7716975.00	2162220.25	100.00	256

Ret. Time: 1.60

<<<< POSITIVE SPECTRA >>>>



*** End of Report ***