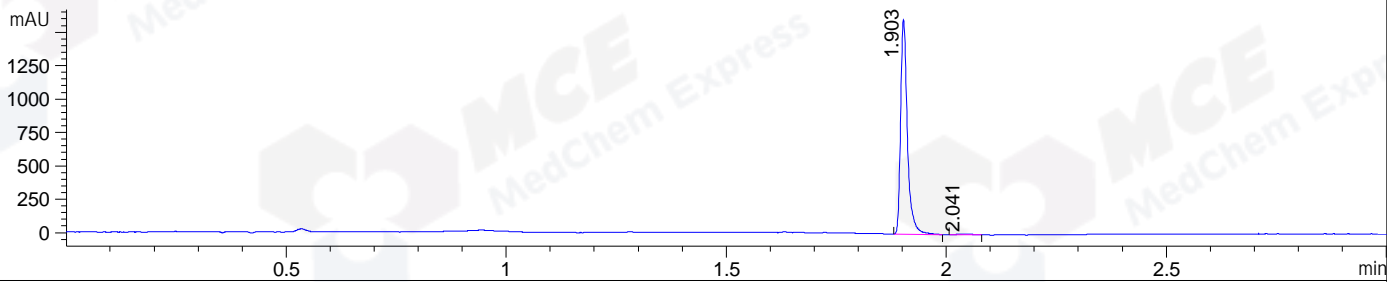
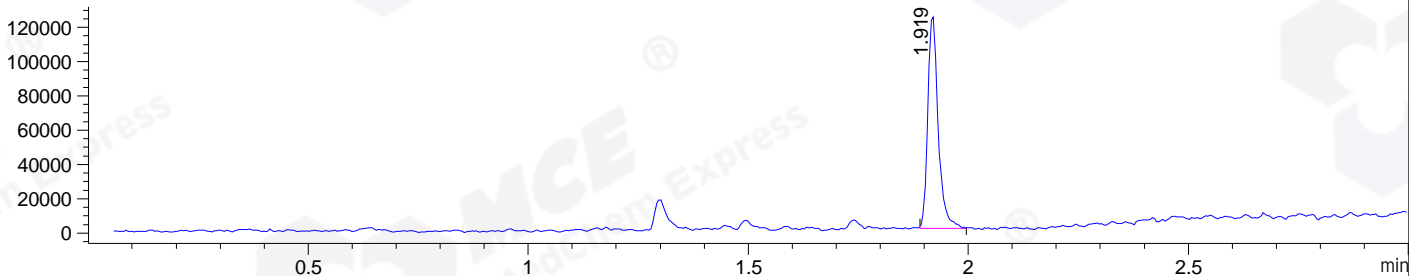


File ..DATA\2020\20201230\1224\BIZ2020-D29-SCH10.D Tgt Mass (CHM):  
Injection Date : 30 Dec 20 10:06 pm +0800 Seq. Line : 144  
Sample Name : BIZ2020-D29-SCH10 Location : P1-B-06  
Acq. Operator : zyj\_1547 Inj : 1  
Spec. Reported : MS Integration Inj Volume : 1 ul  
Acq. Method : D:\Chem32\1\data\2020\20201230\1224\1-POS-3MIN.M  
Analysis Method : D:\CHEM32\1\DATA\2020\20201230\1224\1-POS-3MIN.M  
CAS NO. : 50264-69-2  
Method Info : Mobile Phase: A: water(0.01%TFA) B:ACN(0.01%TFA)  
Gradient: 5% to 95%B within 1.3 min  
Flow Rate :1.8ml/min  
Column :SunFire C18, 4.6\*50mm,3.5um A-RP-698

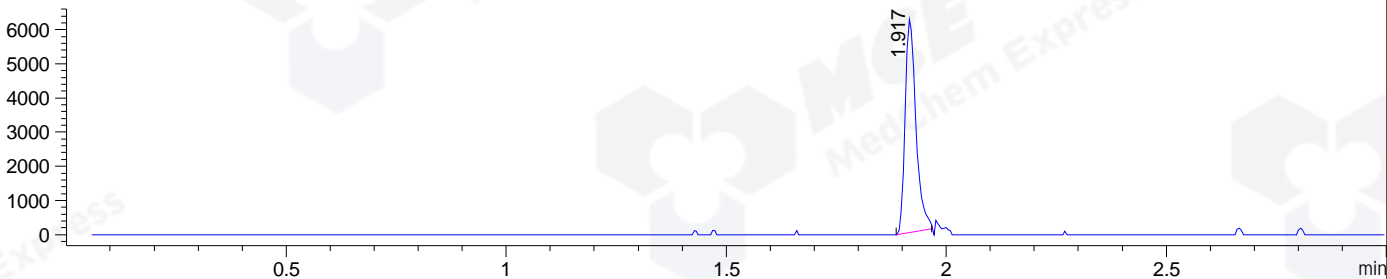
DAD1 B, Sig=214,4 Ref=off



MSD1 TIC, MS File ES-API, Pos, Scan, Frag: 70



Ion 322, MSD1 322, Target Mass 321 +H Positive, EIC=321.7:322.7



Integration Results for DAD1 B, Sig=214,4 Ref=off

RetTim	Width	Area	Height	Area%	MS (+)
1.90	0.02	1718.01	1604.06	99.45	321
2.04	0.04	9.58	4.15	0.55	ND

Integration Results for MSD1 TIC, MS File

RetTim	Width	Area	Height	Area%	MS (+)
1.92	0.02	203904.77	125586.50	100.00	321

Ret. Time: 1.92

<<<< POSITIVE SPECTRA >>>>

ES-API Positive

