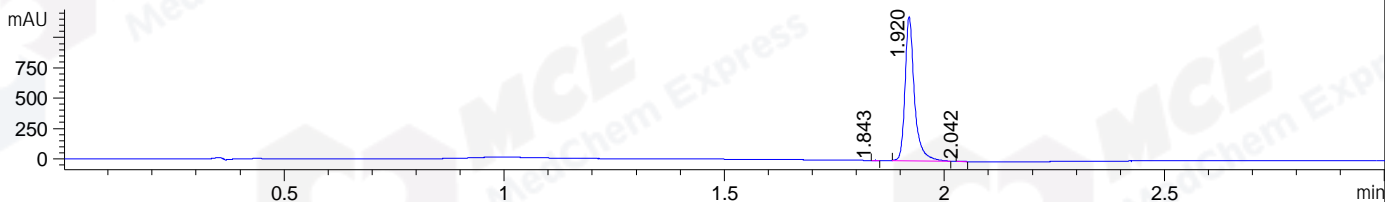
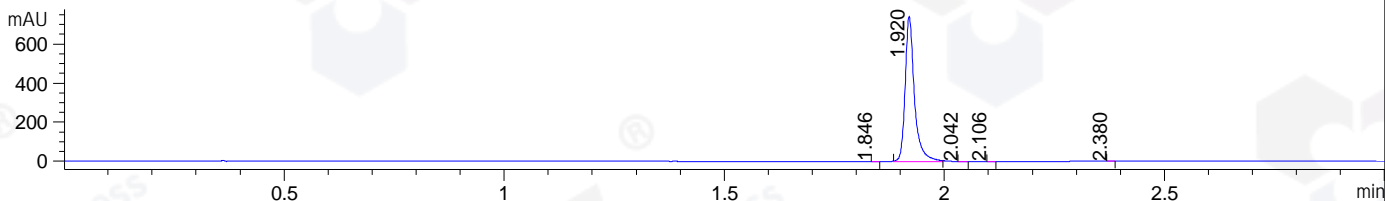


File ..DATA\2019\20190409\564\CPK2019-408-12359-.D Tgt Mass (CHM):
 Injection Date : 9 Apr 19 11:24 am +0800 Seq. Line : 28
 Sample Name : CPK2019-408-12359 Location : P1-A-09
 Acq. Operator : LQ_1052 Inj : 1
 Spec. Reported : MS Integration Inj Volume : 2 ul
 Acq. Method : D:\Chem32\1\data\2019\20190409\564\1-POS-3MIN-1.M
 Analysis Method : D:\CHEM32\1\DATA\2019\20190409\564\1-POS-3MIN-1.M
 Catalog No : HY-B0655
 Method Info : Mobile Phase: A: water(0.01%TFA) B:ACN(0.01%TFA)
 Gradient: 5% to 95%B within 1.3 min
 Flow Rate :1.8ml/min
 Column :SunFire C18, 4.6*50mm,3.5um A-RP-314
 Oven Temperature : 45

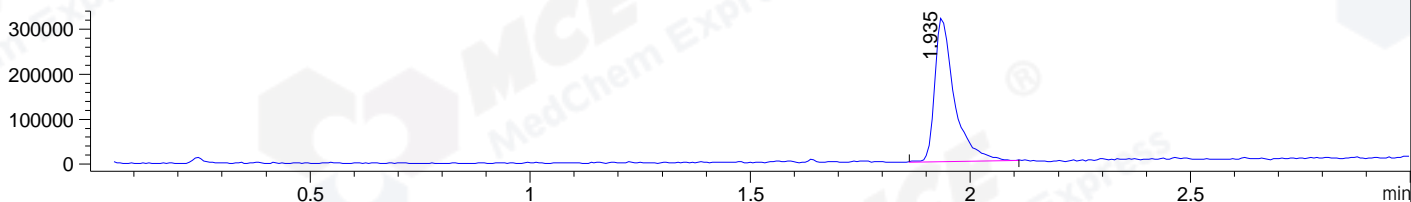
DAD1 B, Sig=214,4 Ref=off



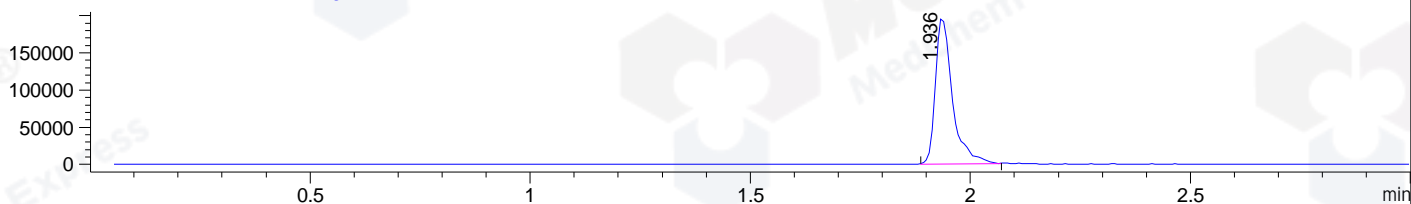
DAD1 C, Sig=254,4 Ref=off



MSD1 TIC, MS File ES-API, Pos, Scan, Frag: 70



Ion 429.6, MSD1 429.6, Target Mass 428.6 +H Positive, EIC=429.3:430.3



Integration Results for DAD1 B, Sig=214,4 Ref=off

RetTim	Width	Area	Height	Area%	MS (+)
1.84	0.01	0.51	0.77	0.03	ND
1.92	0.02	1771.14	1191.04	99.88	430
2.04	0.02	1.58	1.63	0.09	430

Integration Results for DAD1 C, Sig=254,4 Ref=off

RetTim	Width	Area	Height	Area%	MS (+)
1.85	0.01	0.18	0.29	0.02	ND
1.92	0.02	1090.21	743.86	99.88	430
2.04	0.01	0.63	0.73	0.06	430
2.11	0.01	0.33	0.39	0.03	142
2.38	0.01	0.20	0.24	0.02	142

Integration Results for MSD1 TIC, MS File

RetTim	Width	Area	Height	Area%	MS (+)
1.94	0.05	993133.13	320512.94	100.00	430

Ret. Time: 1.94

<<<< POSITIVE SPECTRA >>>>

ES-API Positive

